

0CNP2-M17100EN

Contents

Fig. No. Fig. Name

ENGINE RELATE SECTION

1. ENGIN MOUNTING
2. ENGIN RELATED
3. ENGIN MOUNTING
4. ENGIN RELATED
5. ENGIN MOUNTING
6. ENGIN RELATED

CHASSIS & CRAWLER UNIT

7. CHASSIS

SNOW REMOVING UNIT

8. SNOW REMOVING FRAME
9. CHUTE
10. GEAR CASE
11. BLOWER
12. AUGER

BODY SECTION

13. COVERS
14. HYDRAULIC PIPING
15. POWER TRANSMISSION
16. PANEL & HANDLE
17. CONTROL LEVER
18. CONTROL LEVER

Fig. No. Fig. Name

ELECTRICAL PARTS SECTION

19. ELECTRICAL PARTS

LABELS & ACCESSORIES SECTION

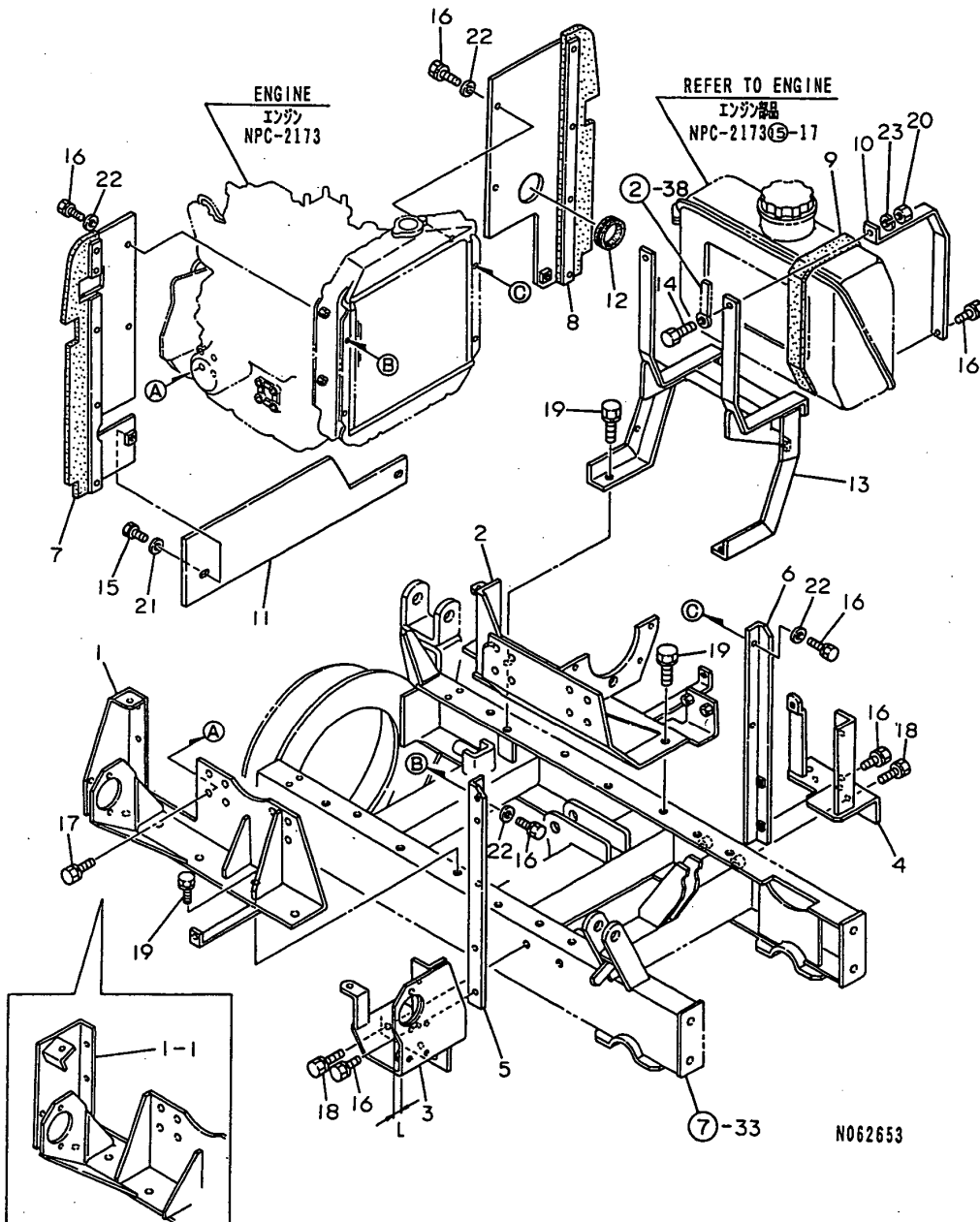
20. LABELS & ACCESSORIES

Fig.1. ENGINE MOUNTING

(A)=YSR1710H
(B)=YSR2110H
(C)=YSR2610H

(D)=YSR1710HE
(E)=YSR2110HE
(F)=YSR2610HE

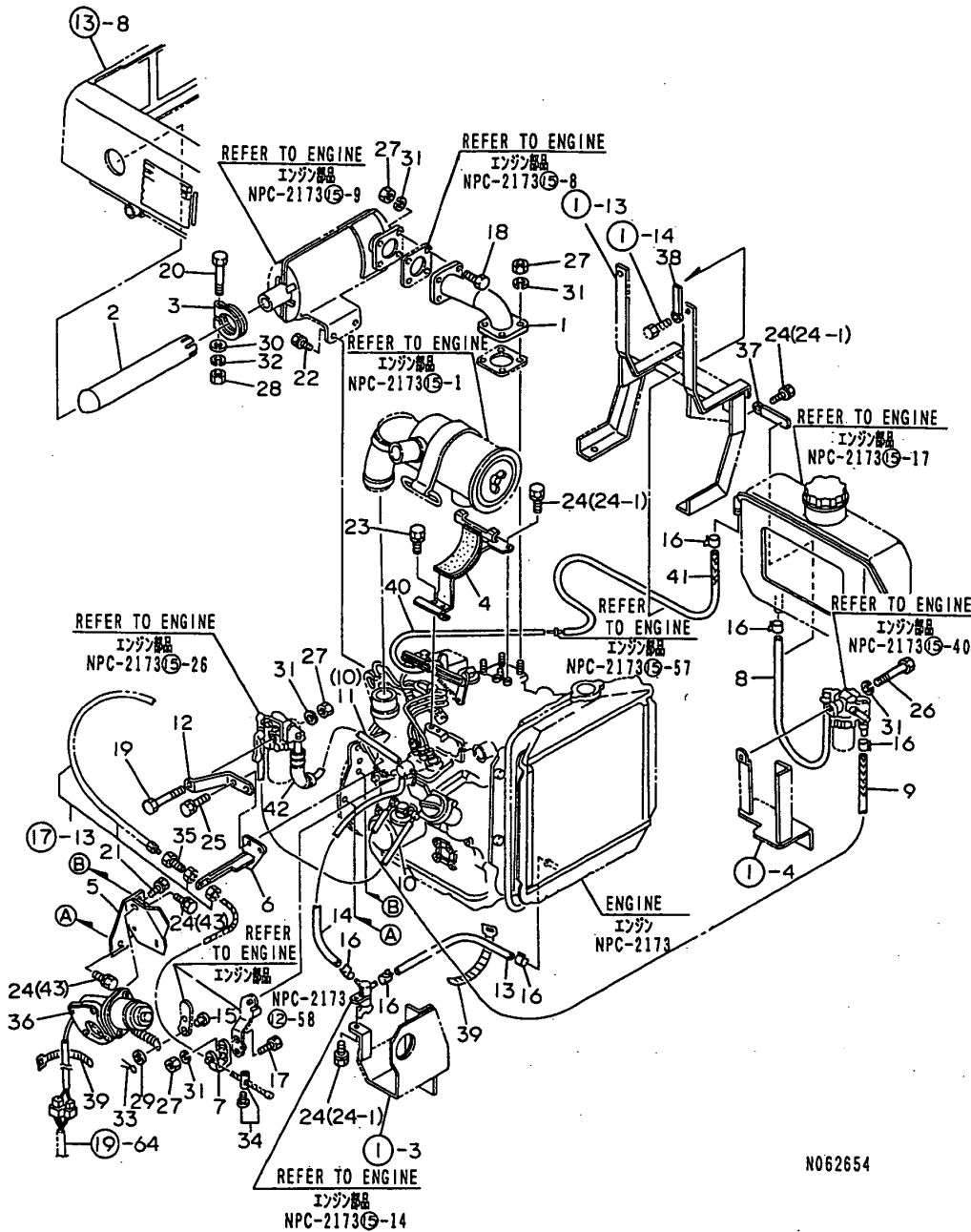
1. ENGINE MOUNTING



No.	Lev.	Parts No.	Description	Q'ty						I	R
				(A)	(B)	(C)	(D)	(E)	(F)		
1	1	1N3090-21000	BASE (L)ASSY, ENGINE	1							
1-1	1	1N3090-21001	BASE (L)ASSY, ENGINE	1			1				S
(A=F104371)											
2	1	1N3090-22000	BASE (R)ASSY, ENGINE	1				1			
3	1	1N3090-23000	BASE L CMP.,RADIATOR	1							
3-1	1	1N3090-23001	BASE L CMP.,RADIATOR	1				1			S 1
(A=F104371)											
4	1	1N3090-24000	BASE R CMP.,RADIATOR	1					1		
5	1	1N3090-25000	STAY L CMP.,RADIATOR	1					1		
6	1	1N3090-26000	STAY R CMP.,RADIATOR	1					1		
7	1	1N3090-27000	COVER L CMP,RADIATOR	1					1		
8	1	1N3090-28000	COVER R CMP,RADIATOR	1					1		
9	1	1N1600-70600	PACKING,FELT	2					2		
10	1	1N3070-29020	BAND,TANK	2					2		
11	1	1N3090-29020	COVER,RADIATOR UNDER	1					1		
12	1	1N3070-29040	RUBBER 8X173,CHANNEL	1					1		
13	1	1N3070-32000	BASE COMP.,FUEL TANK	1					1		
14	1	1N1600-74400	BOLT M 8X 30	2					2		
15	1	1N1600-74410	BOLT M 6X 16	2					2		
16	1	26013-080204	BOLT M 8X 20	14					14		
17	1	1N1600-74420	BOLT 10X22 W/SP.WSHR	16					16		
18	1	26013-100254	BOLT, M10X 25	8					8		
19	1	1N1600-74430	BOLT 12X25 W/SP.WSHR	10					10		
20	1	26607-080002	NUT, M8	2					2		
21	1	22137-060000	WASHER, 6	2					2		
22	1	22137-080000	WASHER, 8	8					8		
23	1	22217-080000	WASHER, SPRING 8	2					2		

Fig.2. ENGINE RELATED

2. ENGINE RELATED



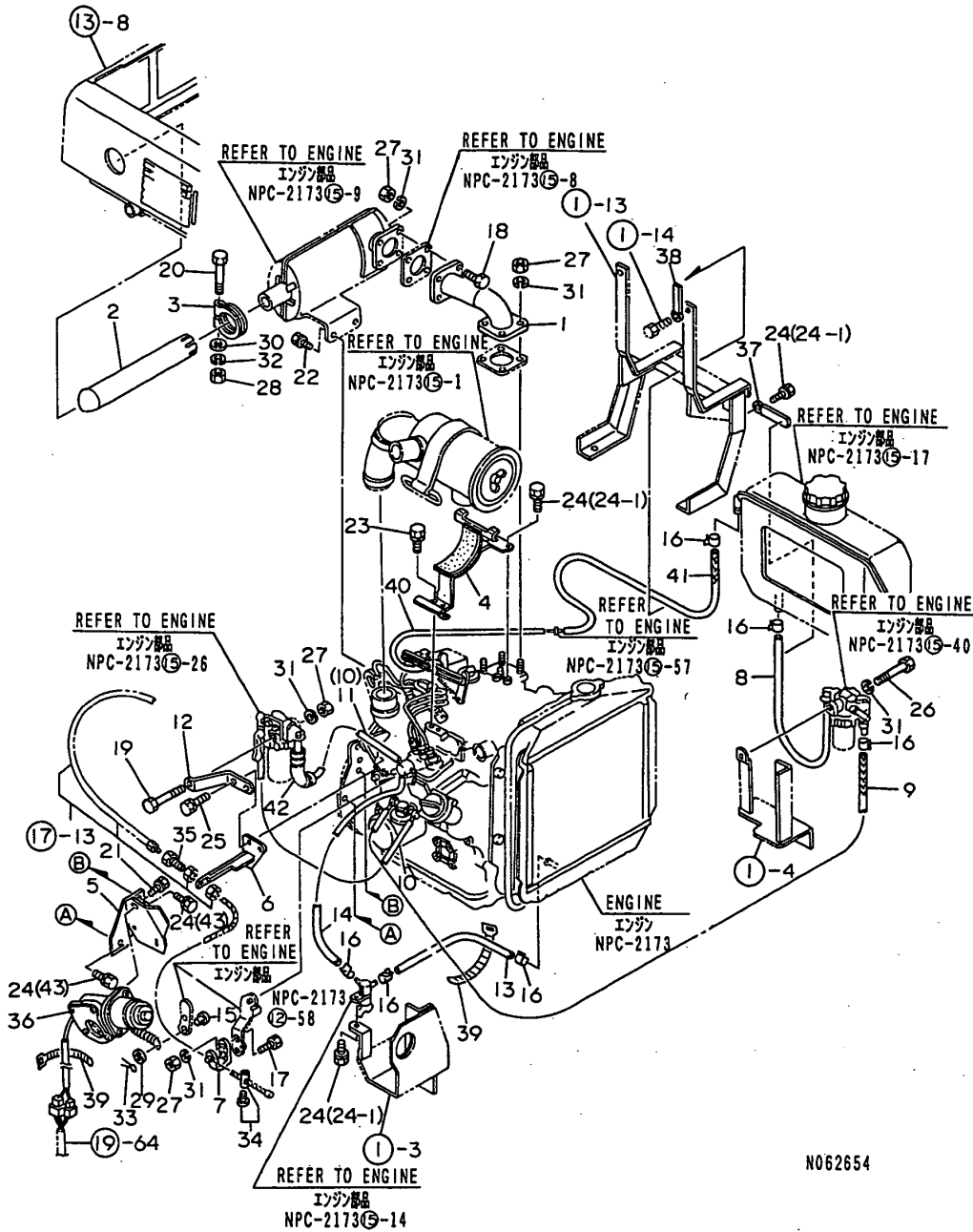
N062654

No.	Lev.	Parts No.	Description	Qty						I	R
				(A)	(B)	(C)	(D)	(E)	(F)		
1	1	1N1840-23000	BEND COMPL.,EXHAUST	1			1				
2	1	1N1830-26000	PIPE COMPL.,EXHAUST	1			1				
3	1	1N1630-29041	CLAMP,EXH.PIPE	1			1				
4	1	1N3090-31000	SUPPORT CMP,AIR CLNR	1			1				
5	1	1N3090-34000	BRACKET COMP,MOTOR	1			1				
6	1	1N3090-33000	BRACKET,ACCELER.WIRE	1			1				
7	1	1N3090-35000	BRACKET CMP,ACCELER.	1			1				
8	1	1N3090-39010	HOSE 700,FUEL	1			1				
8-1	1	1N3080-39020	HOSE 700,FUEL	1			1				N
(A=F305341) (D=F305341)											
9	1	1N3090-39020	HOSE 800,FUEL	1			1				
10	1	1N3090-39030	HOSE 500,FUEL	1			2				
11	1	1N3090-39040	HOSE 400,FUEL	1			1				
11-1	1	1N3090-39030	HOSE 500,FUEL	1			1				N
(A=F104371)											
12	1	1N3090-39050	BRACKET,STRAINER	1			1				
13	1	1N3070-39070	HOSE 200,COOL.WATER	1			1				
14	1	1N3070-39080	HOSE 440,COOL.WATER	1			1				
14-1	1	1N3090-39120	HOSE 400,COOL.WATER	1			1				N
(A=F305341) (D=F305341)											
15	1	1N3090-39090	PIN 6X10,SP.FLAT	1			1				
16	1	1N1600-75130	HOSE BAND 15	12			12				
17	1	26117-080162	BOLT M 8X 16 PLATED	2			2				
18	1	1N1600-74440	BOLT 8X30	4			4				
19	1	1N1600-74450	BOLT M 8X 70	1			1				
20	1	1N1600-74460	BOLT M 10X 65	1			1				
21	1	1N1600-74470	BOLT 5X15 W/SP.WSHR.	3			3				
22	1	26013-060122	BOLT, M6X 12	2			2				
23	1	1N1600-74410	BOLT M 6X 16	2			2				
24	1	1N1600-74480	BOLT W/WASHER 8* 20	6			6				
24-1	1	1N1600-74480	BOLT W/WASHER 8* 20	4			4				K
(A=F305341) (D=F305341)											
25	1	26013-080204	BOLT M 8X 20	2			2				
26	1	1N1600-74490	BOLT 8X65	1			1				
27	1	26607-080002	NUT, M8	12			12				
28	1	26607-100002	NUT, M10	1			1				
29	1	22137-080000	WASHER, 8	1			1				
30	1	22137-100000	WASHER, 10	1			1				
31	1	22217-080000	WASHER, SPRING 8	13			13				
32	1	22217-100000	WASHER, SPRING 10	1			1				
33	1	22417-200160	PIN, COTTER 2.0X16	1			1				
34	1	1N1600-74500	SCREW 2.3, LONGITUD.	1			1				
35	1	1N1600-75100	ADJUSTER AS-5	1			1				
36	1	1N1838-41000	CLAMP,EXH.PIPE	1			1				
37	1	1N1600-75110	CLAMP 8X65,CORD	1			1				
38	1	1N1600-75120	CLAMP 8X80,CORD	2			2				
39	1	1N1600-72970	BAND 170,WIRE	2			2				
40	1	1N3090-39070	HOSE 300,FUEL RETURN	1			1				
41	1	1N3090-39080	HOSE 600,FUEL	1			1				
42	1	1N1600-75160	PLUMMER 15X100	1			1				
43	1	26013-060202	BOLT, M6X 20	2			2				W

N:Old $\frac{Yes}{No}$ New, Q:Old $\frac{No}{Yes}$ New, R:Old $\frac{Yes}{Yes}$ New, S:Old $\frac{No}{No}$ New, W:Add, Z:Discontinued, F:Interchangeable by set, K:Q'ty Change
 ++ CONTINUE ++
 Copyright (C) YANMAR CO., LTD. All Rights Reserved.

Fig.2. ENGINE RELATED

2. ENGINE RELATED



N062654

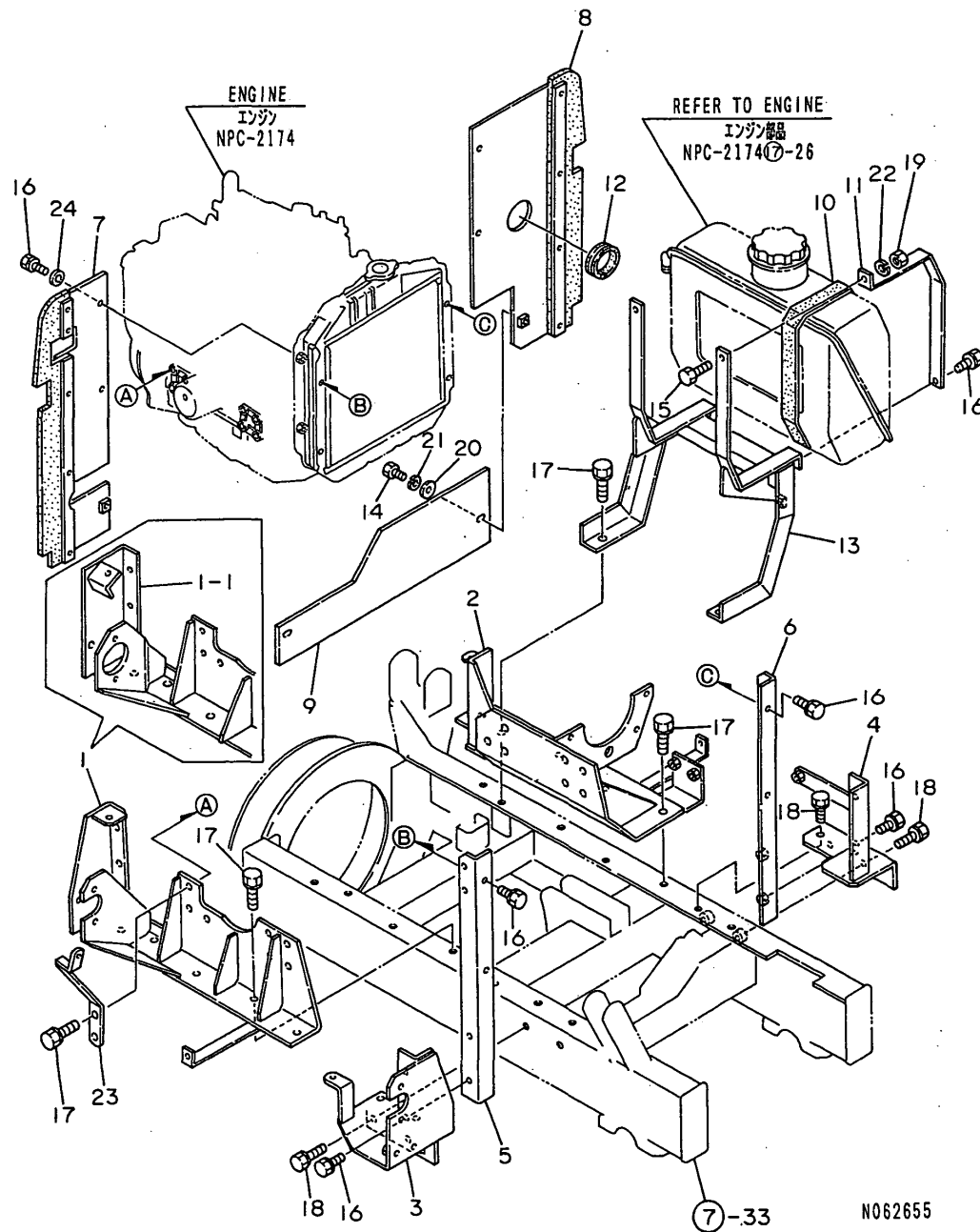
(A)=YSR1710H
(B)=YSR2110H
(C)=YSR2610H

(D)=YSR1710HE
(E)=YSR2110HE
(F)=YSR2610HE

No.	Lev.	Parts No.	Description	Q'ty						I	R
				(A)	(B)	(C)	(D)	(E)	(F)		
		(A=F305341)	(D=F305341)								

Fig.3. ENGINE MOUNTING

3. ENGINE MOUNTING



N062655

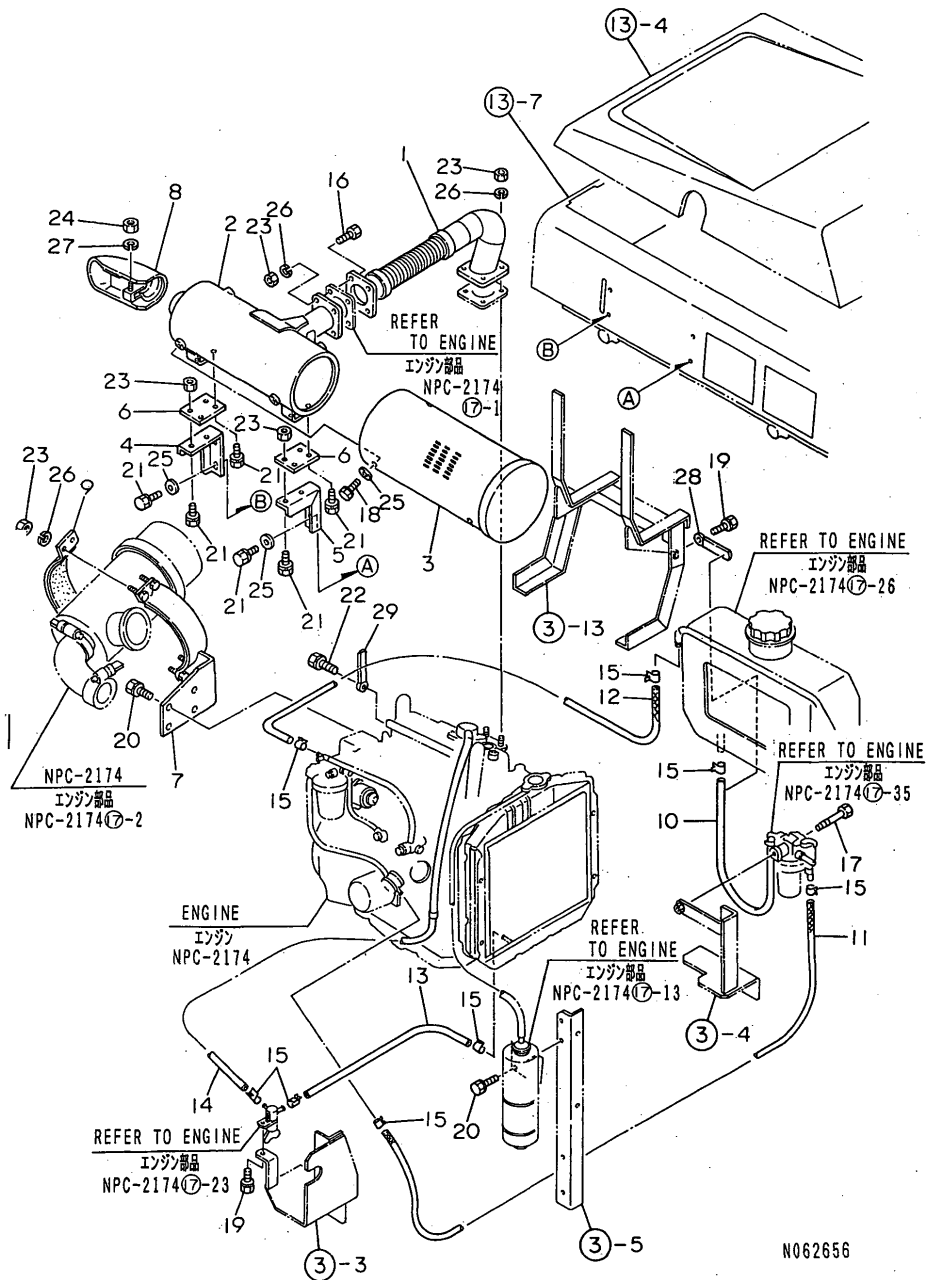
(A)=YSR1710H
(B)=YSR2110H
(C)=YSR2610H

(D)=YSR1710HE
(E)=YSR2110HE
(F)=YSR2610HE

No.	Lev.	Parts No.	Description	Q'ty						I	R
				(A)	(B)	(C)	(D)	(E)	(F)		
1	1	1N3070-21000	BASE (L)ASSY, ENGINE	1				1			
1-1	1	1N3070-21001	BASE (L)ASSY, ENGINE (B=F907671)	1				1			S
2	1	1N3070-22000	BASE (R)ASSY, ENGINE		1				1		
3	1	1N3070-23000	BASE L CMP.,RADIATOR		1				1		
4	1	1N3070-24000	BASE R CMP.,RADIATOR		1				1		
5	1	1N3070-25000	STAY L CMP.,RADIATOR		1				1		
6	1	1N3070-26000	STAY R CMP.,RADIATOR		1				1		
7	1	1N3070-27000	COVER L CMP.,RADIATOR		1				1		
8	1	1N3070-28000	COVER R CMP.,RADIATOR		1				1		
9	1	1N3070-29010	COVER,RADIATOR UNDER		1				1		
10	1	1N1600-70600	PACKING,FELT		2				2		
11	1	1N3070-29020	BAND,TANK		2				2		
12	1	1N3070-29040	RUBBER 8X173,CHANNEL		1				1		
13	1	1N3070-32000	BASE COMP.,FUEL TANK		1				1		
14	1	1N1600-74510	BOLT 6X16		2				2		
15	1	1N1600-74400	BOLT M 8X 30		2				2		
16	1	26013-080204	BOLT M 8X 20		14				14		
17	1	1N1600-74430	BOLT 12X25 W/SP.WSHR		24				24		
18	1	26013-100254	BOLT, M10X 25		8				8		
19	1	26607-080002	NUT, M8		2				2		
20	1	22137-060000	WASHER, 6		2				2		
21	1	22217-060000	WASHER, SPRING 6		2				2		
22	1	22217-080000	WASHER, SPRING 8		2				2		
23	1	1N3070-33000	BRACKET,ACCELER.WIRE		1				1		
24	1	22137-080000	WASHER, 8		4				4		

Fig.4. ENGINE RELATED

4. ENGINE RELATED



N062656

(A)=YSR1710H
(B)=YSR2110H
(C)=YSR2610H

(D)=YSR1710HE
(E)=YSR2110HE
(F)=YSR2610HE

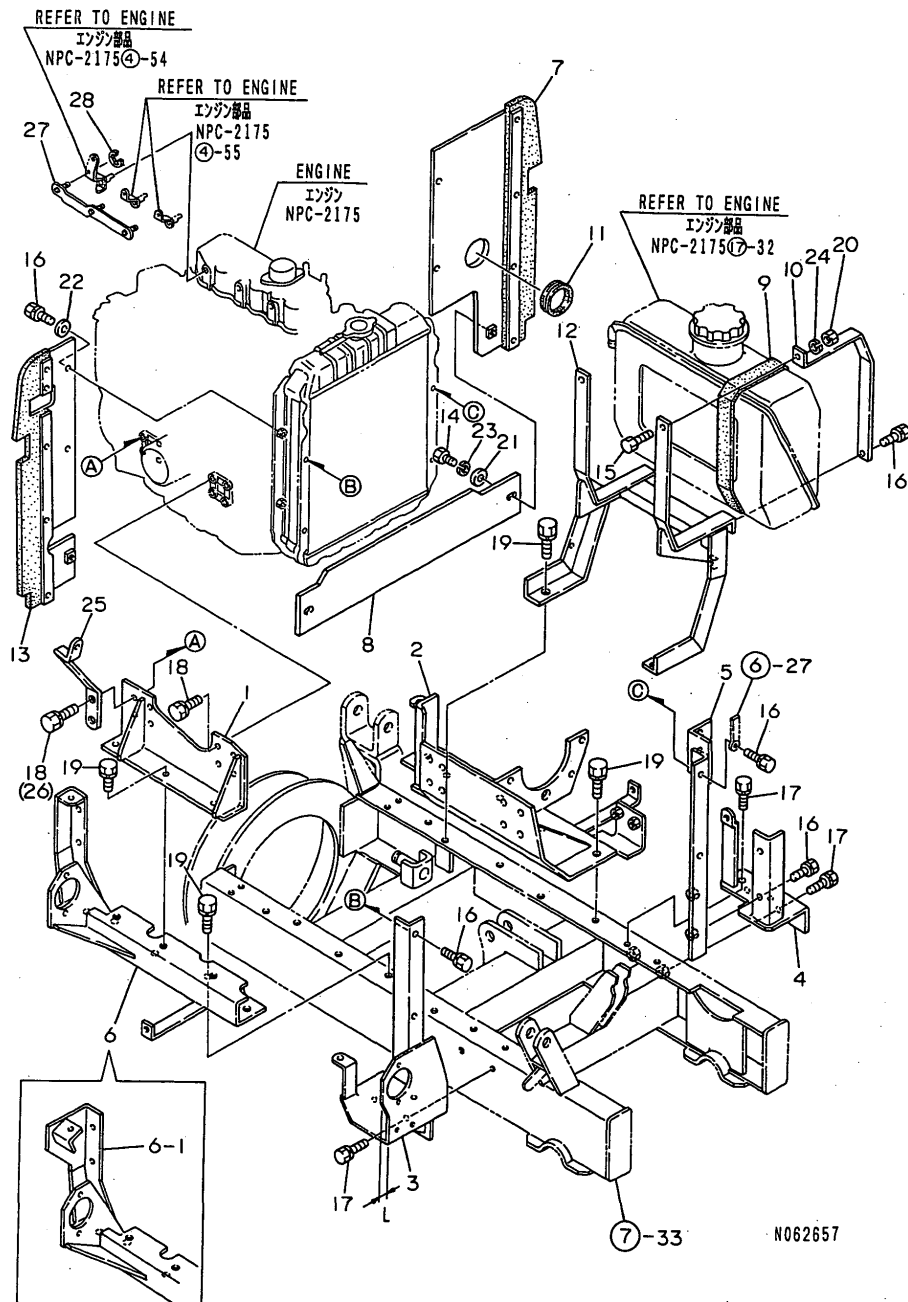
No.	Lev.	Parts No.	Description	Qty						I	R
				(A)	(B)	(C)	(D)	(E)	(F)		
1	1	1N1860-23000	PIPE COMPL.,EXHAUST	1				1			
2	1	1N1860-24000	MUFFLER COMPL.		1				1		
3	1	1N1860-25000	COVER COMP.,MUFFLER	1					1		
4	1	1N1860-29010	STAY F,MUFFLER		1				1		
5	1	1N1860-29020	STAY R,MUFFLER		1				1		
6	1	1N3070-29030	STAY,MUFFLER EXTENS.		2				2		
7	1	1N3070-31000	BRACKET CMP,AIR CLNR		1				1		
8	1	1N1860-32000	CAP,MUFFLER		1				1		
9	1	1N1670-34000	BAND CMP,AIR CLEANER		1				1		
10	1	1N3070-39010	HOSE 750,FUEL		1				1		
11	1	1N3070-39020	HOSE 650,FUEL		1				1		
12	1	1N3070-39060	HOSE 850,FUEL		1				1		
13	1	1N3070-39070	HOSE 200,COOL.WATER		1				1		
14	1	1N3070-39080	HOSE 440,COOL.WATER		1						
14-1	1	1N3080-39080	HOSE 500,COOL.WATER		1				1		N
(B=F907501)											
15	1	1N1600-75130	HOSE BAND 15		16				16		
16	1	1N1600-74440	BOLT 8X30		4				4		
17	1	1N1600-74450	BOLT M 8X 70		1				1		
18	1	26013-080124	BOLT M 8X 12		4				4		
19	1	1N1600-74480	BOLT W/WASHER 8* 20		2				2		
20	1	26013-080204	BOLT M 8X 20		6				6		
21	1	1N1600-74520	BOLT 8X20 W/SP.WSHR.		12				12		
22	1	26117-100202	BOLT M10X 20 PLATED		1				1		
23	1	26607-080002	NUT, M8		17				17		
24	1	26607-100002	NUT, M10		1				1		
25	1	22137-080000	WASHER, 8		8				8		
26	1	22217-080000	WASHER, SPRING 8		13				13		
27	1	22217-100000	WASHER, SPRING 10		1				1		
28	1	1N1600-75110	CLAMP 8X65,CORD		1				1		
29	1	1N1600-75140	CLAMP 10X110,CORD		1				1		

Fig.5. ENGINE MOUNTING

(A)=YSR1710H
(B)=YSR2110H
(C)=YSR2610H

(D)=YSR1710HE
(E)=YSR2110HE
(F)=YSR2610HE

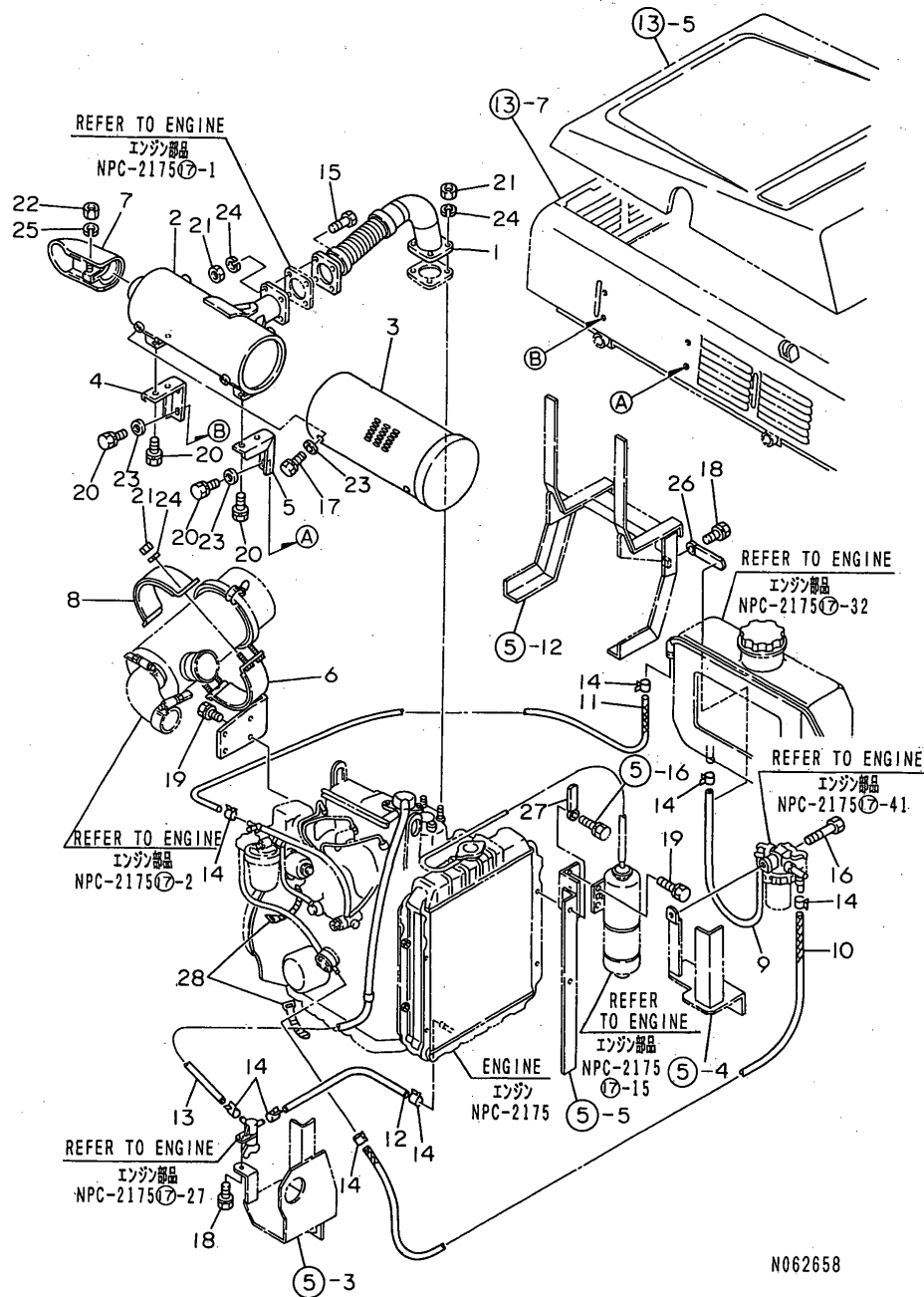
5. ENGINE MOUNTING



No.	Lev.	Parts No.	Description	Qty						I	R	
				(A)	(B)	(C)	(D)	(E)	(F)			
1	1	1N3080-21000	BASE (L)ASSY, ENGINE			1					1	
2	1	1N3080-22000	BASE (R)ASSY, ENGINE			1					1	
3	1	1N3080-23000	BASE L CMP.,RADIATOR			1						
3-1	1	1N3080-23001	BASE L CMP.,RADIATOR (C=F104486)			1					1	S 1
4	1	1N3080-24000	BASE R CMP.,RADIATOR			1					1	
5	1	1N3080-26000	STAY R CMP.,RADIATOR			1					1	
6	1	1N3080-27000	SUB-BASE COMPL.			1						
6-1	1	1N3080-27001	SUB-BASE COMPL. (C=F104486)			1					1	S
7	1	1N3080-28000	COVER R CMP,RADIATOR			1					1	
8	1	1N3080-29020	COVER,RADIATOR UNDER			1					1	
9	1	1N1600-70600	PACKING,FELT			2					2	
10	1	1N3070-29020	BAND,TANK			2					2	
11	1	1N3070-29040	RUBBER 8X173,CHANNEL			1					1	
12	1	1N3070-32000	BASE COMP.,FUEL TANK			1					1	
13	1	1N3080-33000	COVER L CMP,RADIATOR			1					1	
14	1	1N1600-74510	BOLT 6X16			2					2	
15	1	1N1600-74400	BOLT M 8X 30			2					2	
16	1	26013-080204	BOLT M 8X 20			12					12	
17	1	26013-100254	BOLT, M10X 25			8					8	
18	1	1N1600-74420	BOLT 10X22 W/SP.WSHR			16						
18-1	1	1N1600-74420	BOLT 10X22 W/SP.WSHR (C=F104486)			14					14	K
19	1	1N1600-74530	BOLT 12X30 W/SP.WSHR			13					13	
20	1	26607-080002	NUT, M8			2					2	
21	1	22137-060000	WASHER, 6			2					2	
22	1	22137-080000	WASHER, 8			4					4	
23	1	22217-060000	WASHER, SPRING 6			2					2	
24	1	22217-080000	WASHER, SPRING 8			2					2	
25	1	1N3070-33000	BRACKET,ACCELER.WIRE			1					1	
26	1	26013-100252	BOLT, M10X 25 (C=F104486)			2					2	W
27	1	1N3080-35000	LINK CMP.,DECOMPRESS (C=F003831)			1					1	W
28	1	1N1600-77100	E-CIRCLIP 6 (C=F003831)			3					3	W

Fig.6. ENGINE RELATED

6. ENGINE RELATED



N062658

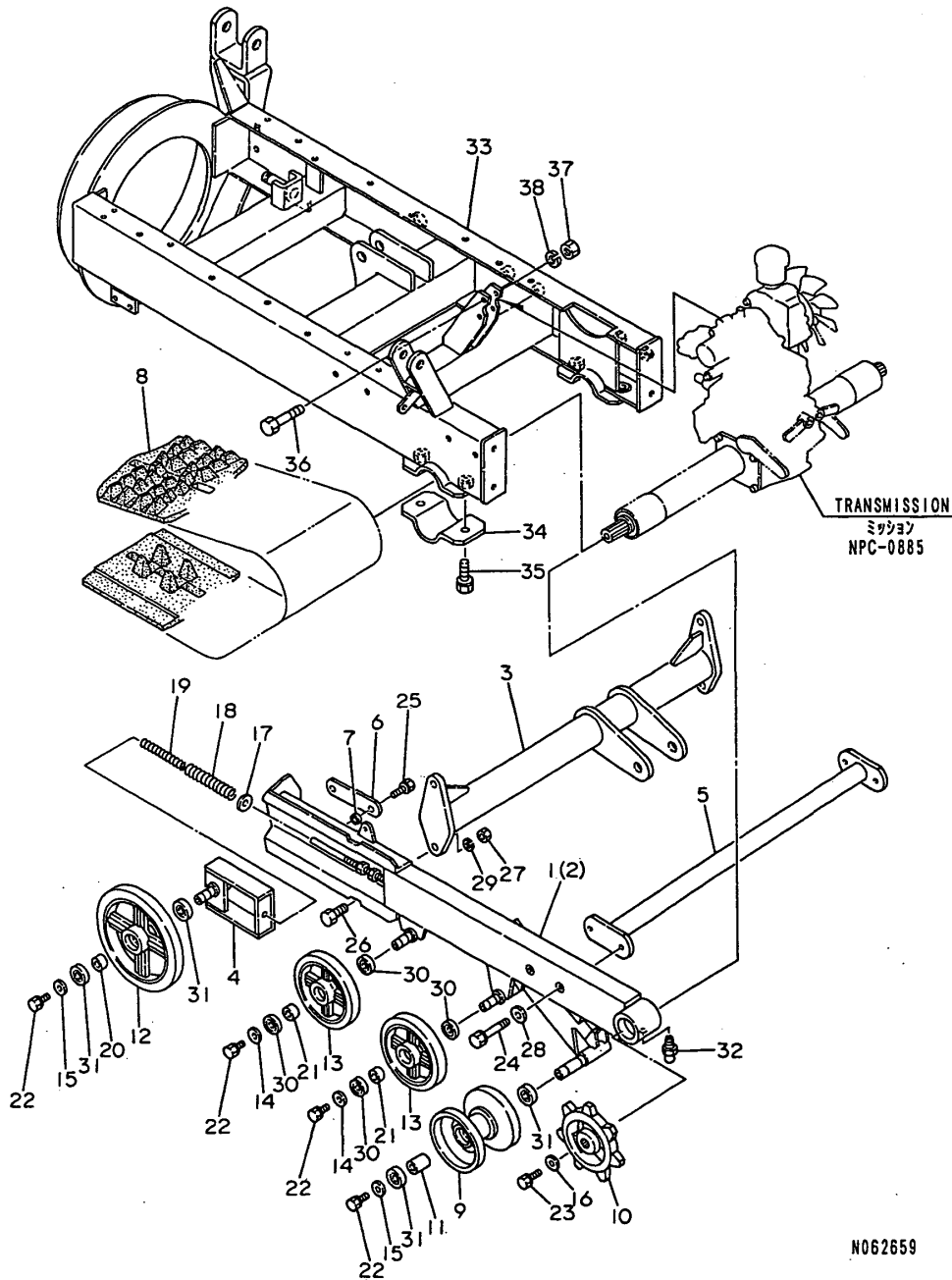
(A)=YSR1710H
(B)=YSR2110H
(C)=YSR2610H

(D)=YSR1710HE
(E)=YSR2110HE
(F)=YSR2610HE

No.	Lev.	Parts No.	Description	Qty						I	R
				(A)	(B)	(C)	(D)	(E)	(F)		
1	1	1N1870-23000	PIPE COMPL.,EXHAUST			1					1
2	1	1N1860-24000	MUFFLER COMPL.			1					1
3	1	1N1860-25000	COVER COMP.,MUFFLER			1					1
4	1	1N1860-29010	STAY F,MUFFLER			1					1
5	1	1N1860-29020	STAY R,MUFFLER			1					1
6	1	1N3080-31000	BRACKET CMP,AIR CLNR			1					1
7	1	1N1860-32000	CAP,MUFFLER			1					1
8	1	1N1670-34000	BAND CMP,AIR CLEANER			1					1
9	1	1N3070-39010	HOSE 750,FUEL			1					1
10	1	1N3080-39020	HOSE 700, FUEL			1					1
11	1	1N3070-39060	HOSE 850,FUEL			1					1
12	1	1N3070-39070	HOSE 200,COOL.WATER			1					1
13	1	1N3080-39080	HOSE 500,COOL.WATER			1					1
14	1	1N1600-75130	HOSE BAND 15			16					16
15	1	1N1600-74440	BOLT 8X30			4					4
16	1	1N1600-74450	BOLT M 8X 70			1					1
17	1	26013-080124	BOLT M 8X 12			4					4
18	1	1N1600-74480	BOLT W/WASHER 8* 20			2					2
19	1	26013-080204	BOLT M 8X 20			6					6
20	1	1N1600-74520	BOLT 8X20 W/SP.WSHR.			8					8
21	1	26607-080002	NUT, M8			13					13
22	1	26607-100002	NUT, M10			1					1
23	1	22137-080000	WASHER, 8			8					8
24	1	22217-080000	WASHER, SPRING 8			13					13
25	1	22217-100000	WASHER, SPRING 10			1					1
26	1	1N1600-75110	CLAMP 8X65,CORD			1					1
27	1	1N1600-75120	CLAMP 8X80,CORD			1					1
28	1	1N1600-72970	BAND 170,WIRE			2					2

Fig.7. CHASSIS

7. CHASSIS



N062659

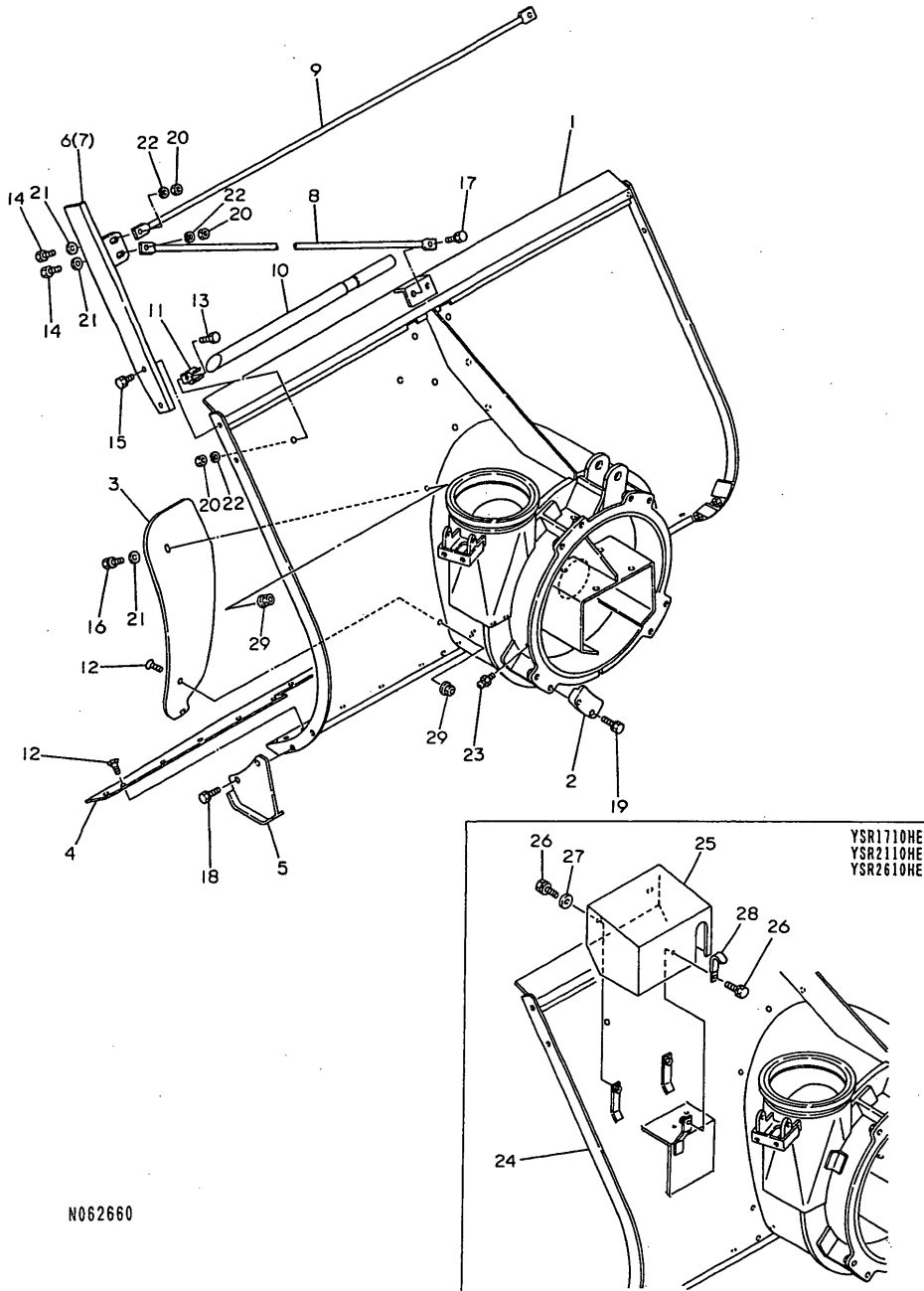
(A)=YSR1710H
(B)=YSR2110H
(C)=YSR2610H

(D)=YSR1710HE
(E)=YSR2110HE
(F)=YSR2610HE

No.	Lev.	Parts No.	Description	Q'ty						I	R
				(A)	(B)	(C)	(D)	(E)	(F)		
1	1	1N3072-11000	FRAME (L), CRAWLER	1	1	1	1	1	1		
2	1	1N3072-12000	FRAME (R), CRAWLER	1	1	1	1	1	1		
3	1	1N3072-13000	BRIDGE COMP.,FRONT	1	1	1	1	1	1		
4	1	1N1672-14000	BEAM,CRAWLER TENSION	2	2	2	2	2	2		
5	1	1N3072-15000	BRIDGE COMP.,REAR	1	1	1	1	1	1		
6	1	1N1632-19010	WASHER,TENSION BEAM	2	2	2	2	2	2		
7	1	1N1632-19020	COLLAR	4	4	4	4	4	4		
8	1	1N1672-39010	CRAWLER 300X36X72,RB	2	2	2	2	2	2		
9	1	1N1672-61000	WHEEL,REAR	2	2	2	2	2	2		
10	1	1N3072-69010	SPROCKET	2	2	2	2	2	2		
11	1	1N1610-70010	COLLAR 25X36	2	2	2	2	2	2		
12	1	1N1632-69020	WHEEL,FRONT	2	2	2	2	2	2		
13	1	1N1600-70040	RING,INDUCTION	4	4	4	4	4	4		
14	1	1N1600-74540	WASHER 10X25X3.2,RD.	4	4	4	4	4	4		
15	1	1N1600-74080	WASHER 10X30X3.2	4	4	4	4	4	4		
16	1	1N1600-74550	WASHER 10X40X4.5,RD.	2	2	2	2	2	2		
17	1	1N1679-13030	WASHER 14X38X4.5,RD.	2	2	2	2	2	2		
18	1	1N1679-16010	SPRING 31X110,COILED	2	2	2	2	2	2		
19	1	1N1679-16020	SPRING 19X110,COILED	2	2	2	2	2	2		
20	1	1N1639-19020	COLLAR 25X16	2	2	2	2	2	2		
21	1	1N1639-19040	COLLAR 20X16	4	4	4	4	4	4		
22	1	26013-100204	BOLT M10X 20	8	8	8	8	8	8		
23	1	26013-100252	BOLT, M10X 25	2	2	2	2	2	2		
24	1	1N1600-74560	BOLT 10X55 W/SP.WSHR	4	4	4	4	4	4		
25	1	26207-120252	BOLT M12X 25 PLATED	4	4	4	4	4	4		
26	1	1N1600-74570	BOLT 12X35	4	4	4	4	4	4		
27	1	1N1600-74580	NUT 12	4	4	4	4	4	4		
28	1	22137-100000	WASHER, 10	4	4	4	4	4	4		
29	1	22217-120000	WASHER, SPRING 12	4	4	4	4	4	4		
30	1	24104-060040	BEARING, 6004UUC3	8	8	8	8	8	8		
31	1	24104-060050	BEARING, 6005UUC3	8	8	8	8	8	8		
32	1	1N1600-75150	NIPPLE A-MT6X1,GRS.	2	2	2	2	2	2		
33	1	1N3074-11000	FRAME COMPL.,BODY	1	1	1	1	1	1		
34	1	1N3074-19030	HOLDER,AXLE	2	2	2	2	2	2		
35	1	1N1600-74590	BOLT 12X35 W/SP.WSHR	4	4	4	4	4	4		
36	1	1N1600-74600	BOLT 10X55	2	2	2	2	2	2		
37	1	26607-100002	NUT, M10	2	2	2	2	2	2		
38	1	22217-100000	WASHER, SPRING 10	2	2	2	2	2	2		

Fig.8. SNOW REMOVING FRAME

8. SNOW REMOVING FRAME



N062660

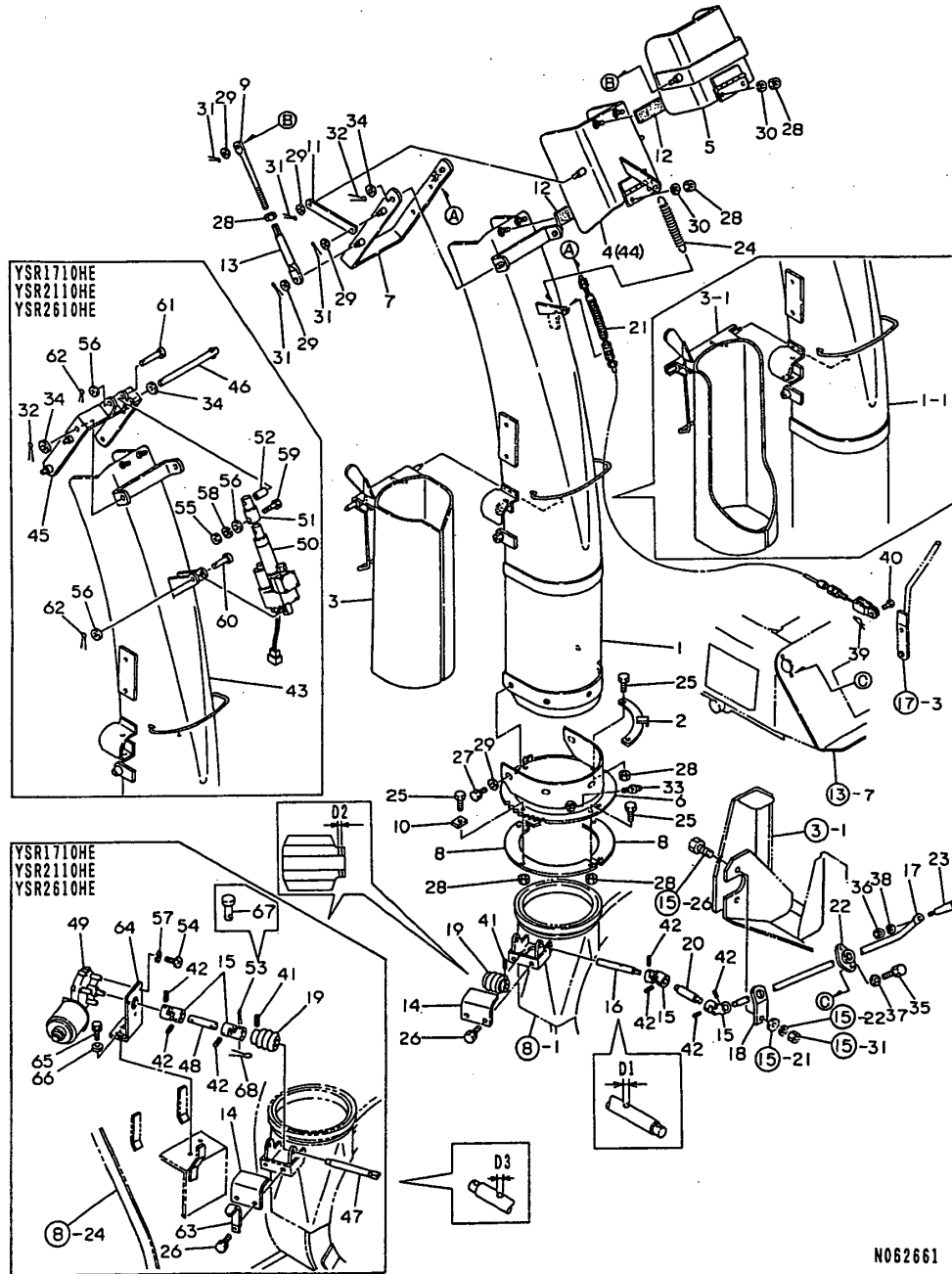
(A)=YSR1710H
(B)=YSR2110H
(C)=YSR2610H

(D)=YSR1710HE
(E)=YSR2110HE
(F)=YSR2610HE

No.	Lev.	Parts No.	Description	Q'ty						I	R
				(A)	(B)	(C)	(D)	(E)	(F)		
1	1	1N3073-11000	FRAME CMP.,SNOW REM.	1	1	1					
2	1	1N3073-19010	GUIDE,ROLLING	4	4	4	4	4	4	4	
3	1	1N1673-19010	PLATE,SHIELDING	1	1	1	1	1	1	1	
4	1	1N1650-70010	EDGE	1	1	1	1	1	1	1	
5	1	1N1630-81000	SLEDGE L	2	2	2	2	2	2	2	
6	1	1N1673-21000	PLATE L CMP,SNOW CUT	1	1	1	1	1	1	1	
7	1	1N1673-22000	PLATE R CMP,SNOW CUT	1	1	1	1	1	1	1	
8	1	1N1673-29010	BAR A,SNOW CUTTING	2	2	2	2	2	2	2	
9	1	1N1673-29020	BAR B,SNOW CUTTING	1	1	1	1	1	1	1	
10	1	1N1803-99010	ROD,SNOW SHOVELING	1	1	1	1	1	1	1	
11	1	1N1803-99020	METAL,LOCK	2	2	2	2	2	2	2	
12	1	1N1639-12170	SCREW 8X15,CRFHM.C.	15	15	15	15	15	15	15	
13	1	26117-080162	BOLT M 8X 16 PLATED	2	2	2	2	2	2	2	
14	1	26117-080252	BOLT M 8X 25 PLATED	4	4	4	4	4	4	4	
15	1	1N1600-74480	BOLT W/WASHER 8* 20	4	4	4	4	4	4	4	
16	1	26013-080204	BOLT M 8X 20	1	1	1	1	1	1	1	
17	1	1N1600-74610	BOLT 8X25	2	2	2	2	2	2	2	
18	1	26013-100254	BOLT, M10X 25	4	4	4	4	4	4	4	
19	1	1N1600-74620	BOLT 12X45 W/SP.WSHR	8	8	8	8	8	8	8	
20	1	26607-080002	NUT, M8	6	6	6	6	6	6	6	
21	1	22137-080000	WASHER, 8	5	5	5	5	5	5	5	
22	1	22217-080000	WASHER, SPRING 8	6	6	6	6	6	6	6	
23	1	1N1600-75150	NIPPLE A-MT6X1,GRS.	3	3	3	3	3	3	3	
24	1	1N3073-13000	FRAME C						1	1	1
25	1	1N3073-81000	COVER COMP.,MOTOR						1	1	1
26	1	26013-060164	BOLT M 6X 16						3	3	3
27	1	22137-060000	WASHER, 6						2	2	2
28	1	1N1600-75450	CLAMP 6X45,CORD						1	1	1
29	1	26366-080002	NUT, M8	3	3	3	3	3	3	3	W
				(A=F305341)	(B=F305391)	(C=F305441)	(D=F305341)	(E=F305391)	(F=F305441)		

Fig.9. CHUTE

9. CHUTE



N062661

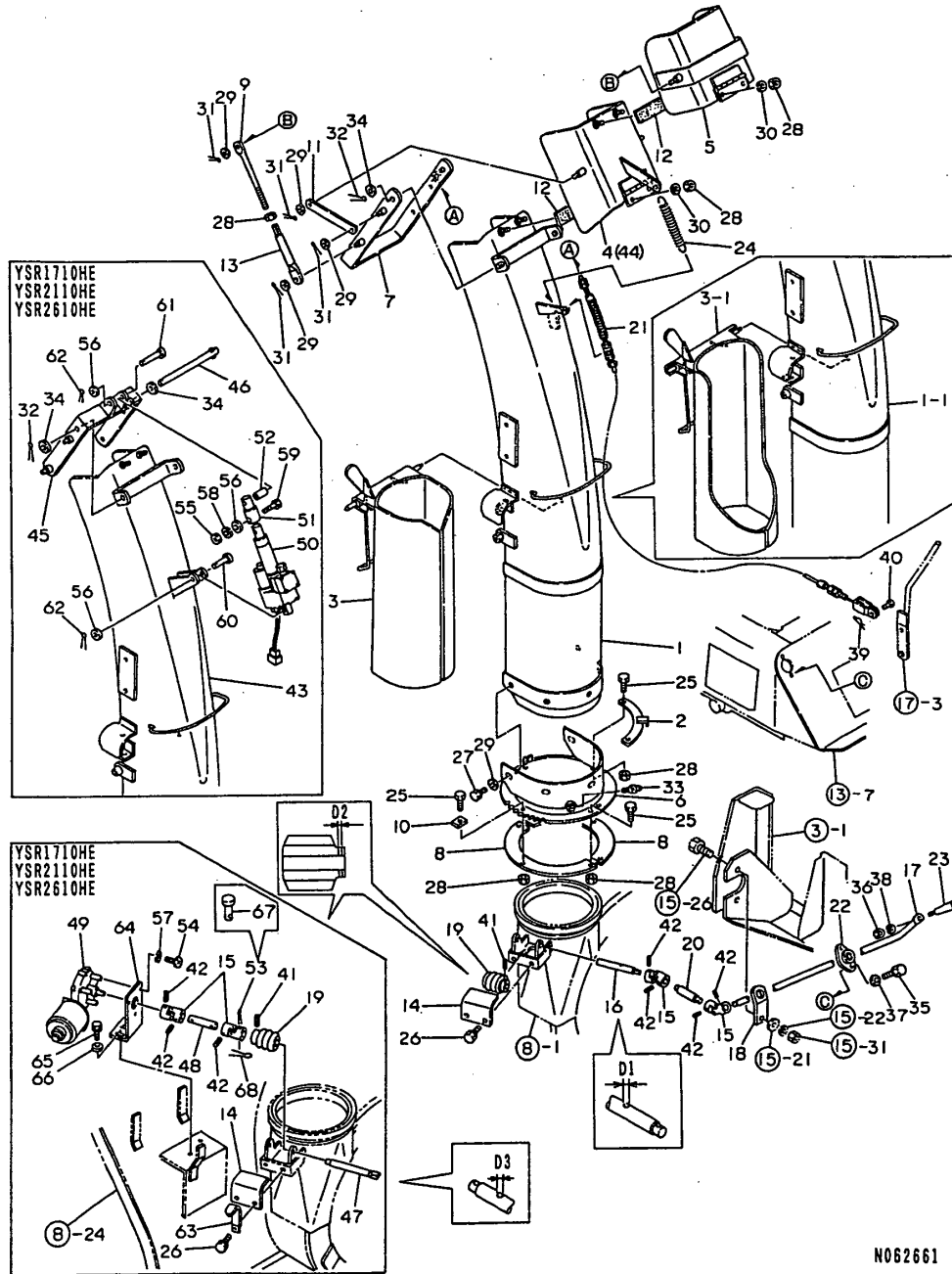
(A)=YSR1710H
(B)=YSR2110H
(C)=YSR2610H

(D)=YSR1710HE
(E)=YSR2110HE
(F)=YSR2610HE

No.	Lev.	Parts No.	Description	Q'ty						I	R
				(A)	(B)	(C)	(D)	(E)	(F)		
1	1	1N1833-31000	CHUTE 1200 CMP,2-STP	1	1	1					
1-1	1	1N3073-31001	CHUTE 1200 CMP,2-STP	1	1	1					S
		(A=F003701) (B=F003701) (C=F003701)									
2	1	1N1600-71420	STOPPER,CHUTE	1	1	1	1	1	1	1	
3	1	1N1833-32000	COVER CMP.,CARTRIDGE	1	1	1					
3-1	1	1N3073-32000	COVER CMP.,CARTRIDGE	1	1	1	1	1	1	1	S
		(A=F907501) (B=F907501) (C=F907501)									
4	1	1N1833-33000	CAP A COMP.,CHUTE	1	1	1					
5	1	1N1833-34000	CAP B COMP.,CHUTE	1	1	1	1	1	1	1	
6	1	1N1833-35000	BASE COMP.,CHUTE	1	1	1					
6-1	1	1N3073-35000	BASE COMP.,CHUTE	1	1	1	1	1	1	1	R
		(A=F907501) (B=F907501) (C=F907501)									
7	1	1N1833-36000	ARM CMP.,CHUTE CONT.	1	1	1					
8	1	1N1673-39010	CLAMP,CHUTE	2	2	2	2	2	2	2	
9	1	1N1763-39010	ROD,ADJUSTING	2	2	2	2	2	2	2	
10	1	1N1673-39020	STOPPER,CHUTE	1	1	1	1	1	1	1	
11	1	1N1833-39020	ARM 129,LINK	2	2	2	2	2	2	2	
12	1	1N1673-39030	RUBBER,CHUTE	2	2	2	2	2	2	2	
13	1	1N1833-39030	ROD 105,CHUTE LINK	2	2	2	2	2	2	2	
14	1	1N1683-19010	COVER,WORM	1	1	1	1	1	1	1	
15	1	1N1600-70150	JOINT CMP.,UNIVERSAL	2	2	2	2	2	2	2	
16	1	1N1867-59010	SHAFT,WORM	1	1	1					1
16-1	1	1N3077-59100	SHAFT,WORM	1	1	1					F 2
		(A=F402281) (B=F402321) (C=F402371)									
17	1	1N3087-59010	HANDLE,CHUTE	1	1	1					
18	1	1N3087-59020	BRACKET,CHUTE HANDLE	1	1	1					
19	1	1N1610-70130	WORM	1	1	1	1	1	1	1	1
19-1	1	1N1610-70131	WORM	1	1	1	1	1	1	1	F 3
		(A=F402281) (B=F402321) (C=F402371) (D=F402281) (E=F402321) (F=F402371)									
20	1	1N3087-59030	JOINT,CHUTE HANDLE	1	1	1					
21	1	1N1867-73000	WIRE,CHUTE	1	1	1					
22	1	1N1600-72250	BUSH,RESIN BEARING	1	1	1					
23	1	1N1679-17070	GRIP,ROTARY	1	1	1					
24	1	1N1600-71570	COIL SPRING 17.2X144	1	1	1					
25	1	26116-080202	BOLT, M8X 20 PLATED	6	6	6	6	6	6	6	
26	1	1N1600-74480	BOLT W/WASHER 8* 20	2	2	2	2	2	2	2	
27	1	1N1600-74480	BOLT W/WASHER 8* 20	5	5	5	5	5	5	5	
28	1	26607-080002	NUT, M8	12	12	12	12	12	12	12	
29	1	22137-080000	WASHER, 8	13	13	13	13	13	13	13	
30	1	22217-080000	WASHER, SPRING 8	4	4	4	4	4	4	4	
31	1	22417-250160	PIN, COTTER 2.5X16	8	8	8	8	8	8	8	
32	1	1N1600-72160	PIN 3X20,COTTER	2	2	2	1	1	1	1	
33	1	1N1600-75150	NIPPLE A-MT6X1,GRS.	1	1	1	1	1	1	1	
34	1	22137-100000	WASHER, 10	2	2	2	2	2	2	2	
35	1	1N1600-74410	BOLT M 6X 16	2	2	2					
36	1	26607-100002	NUT, M10	1	1	1					
37	1	22137-060000	WASHER, 6	2	2	2					
38	1	22217-100000	WASHER, SPRING 10	1	1	1					
39	1	1N1600-72220	PIN 6,SNAP	1	1	1					
40	1	1N1600-71670	PIN 6X20,FLAT HEAD	1	1	1					
41	1	22351-030025	PIN, SPRING 3.0X25	1	1	1	1	1	1	1	

Fig.9. CHUTE

9. CHUTE



N062661

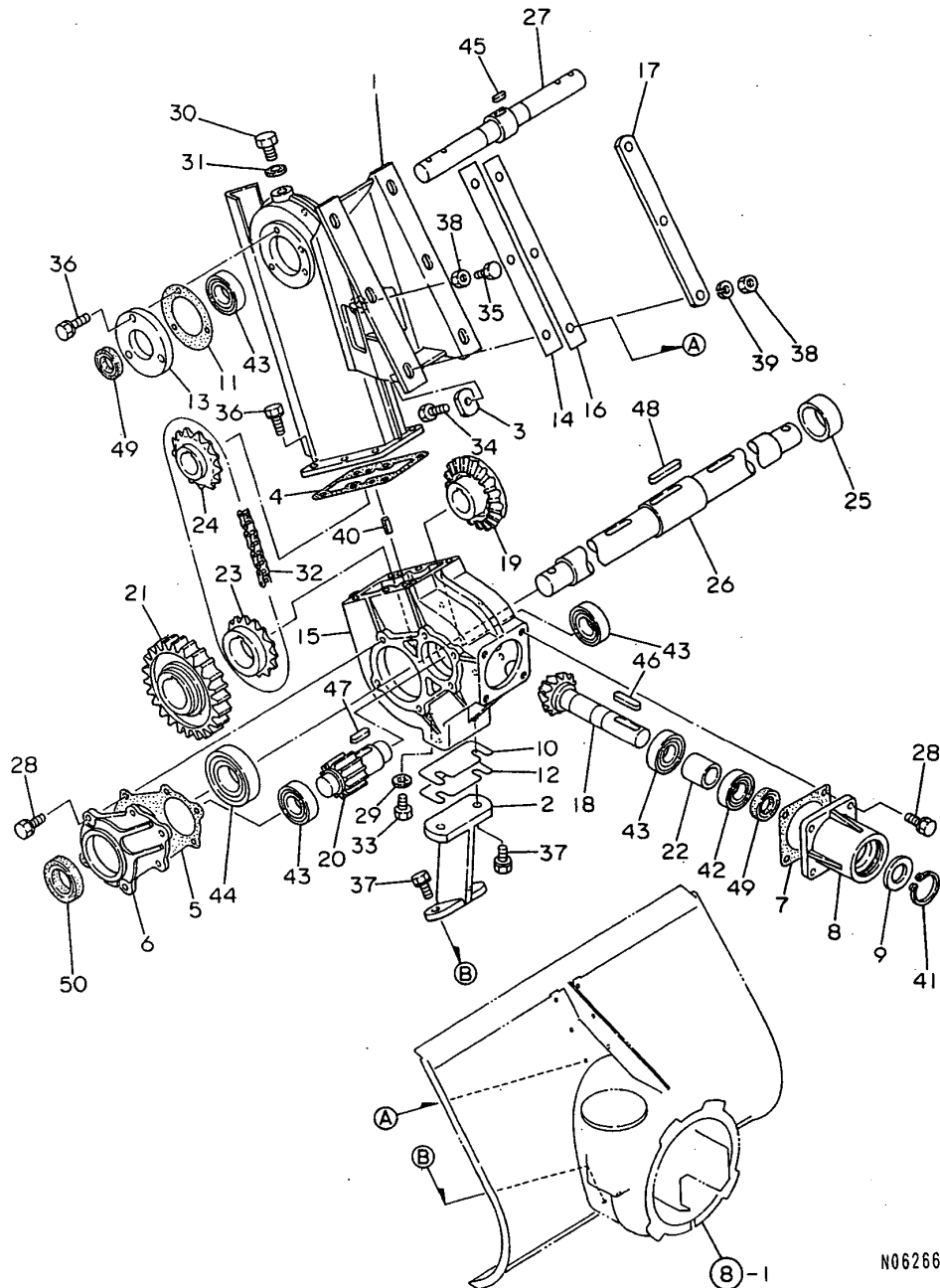
(A)=YSR1710H
(B)=YSR2110H
(C)=YSR2610H

(D)=YSR1710HE
(E)=YSR2110HE
(F)=YSR2610HE

No.	Lev.	Parts No.	Description	Q'ty						I	R
				(A)	(B)	(C)	(D)	(E)	(F)		
41-1	1	22351-045025 (A=F402281) (B=F402321) (C=F402371) (D=F402281)	PIN, SPRING 4.5X25	1	1	1	1	1	1	1	S
42	1	1N1600-71590	PIN 4.5X20,SPRING	4	4	4	3	3	3		
43	1	1N3073-33001	CHUTE 1200 CMP,MOTOR				1	1	1		
44	1	1N3073-34000	CAP A COMP.,CHUTE				1	1	1		
45	1	1N3073-36000	ARM CMP,CHUTE CONTR.				1	1	1		
46	1	1N1600-77140	PIN 10X185,PRESS				1	1	1		
47	1	1N3157-59010	SHAFT,WORM				1	1	1		
47-1	1	1N3157-59011	SHAFT,WORM				1	1	1	S	4
48	1	1N3077-59090	SHAFT,JOINT	(D=F402281)	(E=F402321)			1	1	1	
49	1	1N1600-77150	MOTOR					1	1	1	
50	1	1N3078-42000	CYLINDER,MOTOR					1	1	1	
51	1	1N3078-49010	ADAPTER,CYLINDER					1	1	1	
52	1	1N3078-49020	BUSH,CYLINDER PIN					1	1	1	
53	1	22417-400320	PIN, COTTER 4.0X32					1	1	1	Z
54	1	1N1600-74810	SCREW 5X16,PAN HD.MC	(D=F201553)	(E=F201559)			3	3	3	
54-1	1	26013-050164	BRACKET COMPL.,WIRE					3	3	3	R
55	1	26707-060002	NUT, M6	(D=F305341)	(E=F305391)			1	1	1	
56	1	22137-060000	WASHER, 6					3	3	3	
57	1	22217-050000	WASHER, SPRING 5					3	3	3	
58	1	22217-060000	WASHER, SPRING 6					1	1	1	
59	1	1N1600-77160	BOLT 6X35					1	1	1	
60	1	1N1600-77170	PIN 6X35,ROUND HEAD					1	1	1	
61	1	1N1600-77180	PIN 6X50,ROUND HEAD					1	1	1	
62	1	22417-200160	PIN, COTTER 2.0X16					2	2	2	
63	1	1N1600-77190	CLAMP 8X45,CORD					1	1	1	
64	1	1N1600-77200	BASE COMP.,MOTOR					1	1	1	
65	1	1N1600-74480	BOLT W/WASHER 8* 20					2	2	2	
66	1	22137-080000	WASHER, 8					2	2	2	
67	1	1N3077-69150	PIN 4.3X25					1	1	1	W
68	1	22417-160100	COTTER PIN	(D=F201553)	(E=F201559)			1	1	1	W
				(D=F201553)	(E=F201559)						

Fig.10. GEAR CASE

10. GEAR CASE



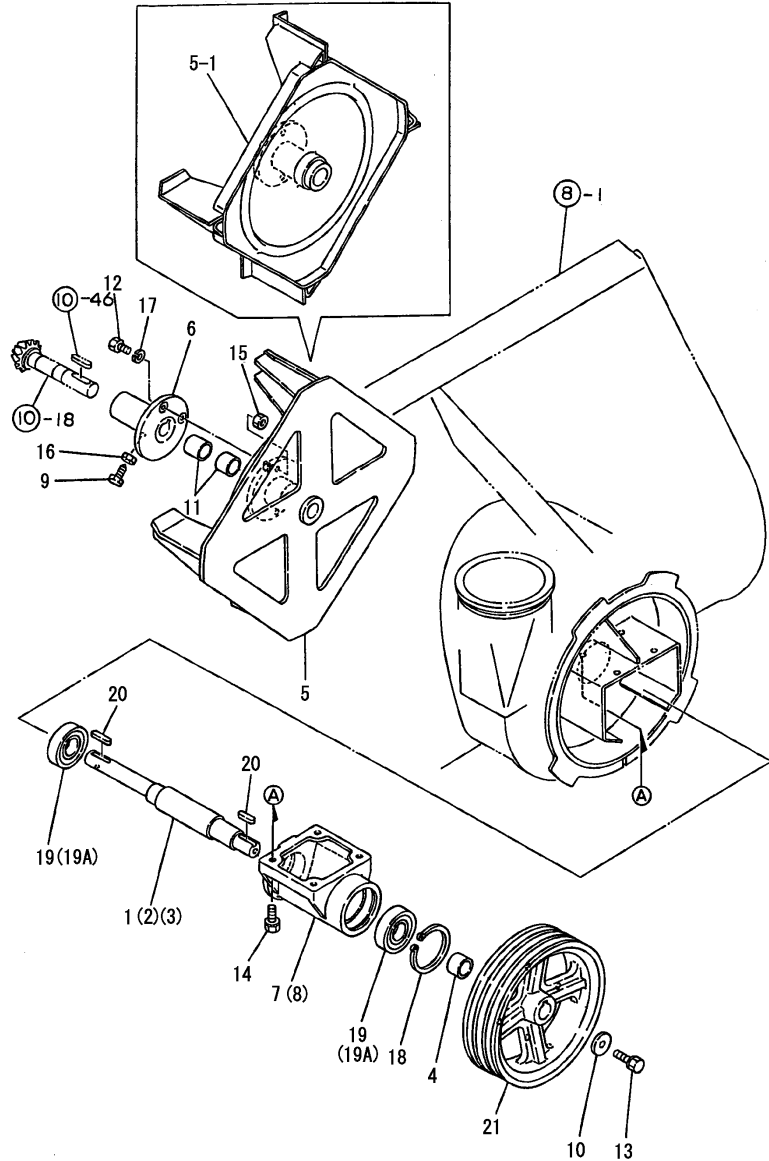
N062662

(A)=YSR1710H
(B)=YSR2110H
(C)=YSR2610H

(D)=YSR1710HE
(E)=YSR2110HE
(F)=YSR2610HE

No.	Lev.	Parts No.	Description	Q'ty						I	R
				(A)	(B)	(C)	(D)	(E)	(F)		
1	1	1N1673-16000	CASE,CHAIN	1	1	1	1	1	1		
2	1	1N1600-75170	SUPPORT,GEAR CASE	1	1	1	1	1	1		
3	1	1N1863-19010	WASHER,CHAIN CASE	6	6	6	6	6	6		
4	1	1N1610-70020	PACKING,AUGER GR.CS.	1	1	1	1	1	1		
5	1	1N1610-70030	PACKING,GR.CS.COVER	2	2	2	2	2	2		
6	1	1N1633-19041	COVER,AUGER GEAR CS.	2	2	2	2	2	2		
7	1	1N1610-70040	PACKING,INPUT HOUSG	1	1	1	1	1	1		
8	1	1N1633-19060	HOUSING,INPUT	1	1	1	1	1	1		
9	1	1N1610-70070	PLATE,PROTECTIVE	1	1	1	1	1	1		
10	1	1N1610-70050	LINER 2.0,GEAR CASE	1	1	1	1	1	1		
11	1	1N1673-19080	PACKING,UPR.ROTOR CV	2	2	2	2	2	2		
12	1	1N1610-70060	LINER 0.6,GEAR CASE	3	3	3	3	3	3		
13	1	1N1673-19090	COVER,UPPER ROTOR	2	2	2	2	2	2		
14	1	1N1633-19110	LINER 1.0,CHN.CS.ADJ	2	2	2	2	2	2		
15	1	1N1673-19110	CASE,AUGER GEAR	1	1	1	1	1	1		
16	1	1N1633-19120	LINER 2.0,CHN.CS.ADJ	5	5	5	5	5	5		
17	1	1N1633-19130	WASHER,SPACER	2	2	2	2	2	2		
18	1	1N1610-70080	GEAR M3X16,BEVEL	1	1	1	1	1	1		
19	1	1N1610-70090	GEAR M3X31,BEVEL	1	1	1	1	1	1		
20	1	1N1610-70100	GEAR M3.5X12,SPUR	1	1	1	1	1	1		
21	1	1N1610-70110	GEAR M3.5X34,SPUR	1	1	1	1	1	1		
22	1	1N1610-70120	LINK COMPL.,CLUTCH	1	1	1	1	1	1		
23	1	1N1633-29070	SPROCKET 40X18,LOWER	1	1	1	1	1	1		
24	1	1N1633-29080	SPROCKET 40X18,UPPER	1	1	1	1	1	1		
25	1	1N1633-29090	COLLAR 40X19	1	1	1	1	1	1		
26	1	1N1633-49020	SHAFT,AUGER	1	1	1	1	1	1		
27	1	1N1673-49030	SHAFT,UPPER ROTOR	1	1	1	1	1	1		
28	1	1N1600-73590	BOLT W/SP,SM.PRECORD	16	16	16	16	16	16		
29	1	1N1600-73090	PACKING 10X18X2,RD.	1	1	1	1	1	1		
30	1	1N1689-19010	CAP,OIL	1	1	1	1	1	1		
31	1	1N1689-19020	PACKING,OIL CAP	1	1	1	1	1	1		
32	1	1N1679-19110	CHAIN 40X78,ROLLER	1	1	1	1	1	1		
33	1	26027-100102	BOLT 10X10,HEX.	1	1	1	1	1	1		
34	1	26117-100302	BOLT M10X 30	6	6	6	6	6	6		
35	1	1N1600-74640	BOLT 10X65,FULL THRD	1	1	1	1	1	1		
36	1	1N1600-74610	BOLT 8X25	12	12	12	12	12	12		
37	1	26013-100252	BOLT, M10X 25	4	4	4	4	4	4		
38	1	26607-100002	NUT, M10	7	7	7	7	7	7		
39	1	22217-100000	WASHER, SPRING 10	6	6	6	6	6	6		
40	1	1N1600-72440	PIN 6X16,SPRING	2	2	2	2	2	2		
41	1	22252-000450	RING, 45	1	1	1	1	1	1		
42	1	24101-060054	BEARING, BALL 6005	1	1	1	1	1	1		
43	1	24101-062050	BEARING, BALL 6205C3	5	5	5	5	5	5		
44	1	24101-062070	BEARING, BALL 6207C3	2	2	2	2	2	2		
45	1	1N1600-71960	KEY 7X7X23 RR,FEATHR	1	1	1	1	1	1		
46	1	1N1600-72000	KEY 7X7X33 SS,FEATHR	1	1	1	1	1	1		
47	1	1N1600-72040	KEY 8X7X30 RR,FEATHR	1	1	1	1	1	1		
48	1	1N1600-72130	KEY 12X8X52 RR,FTHR.	1	1	1	1	1	1		
49	1	24421-254008	SEAL, OIL TC254008	3	3	3	3	3	3		
50	1	24421-355511	SEAL, OIL TC355511	2	2	2	2	2	2		

Fig.11. BLOWER



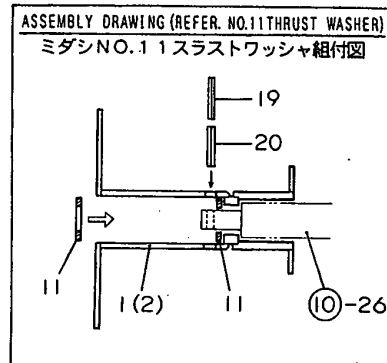
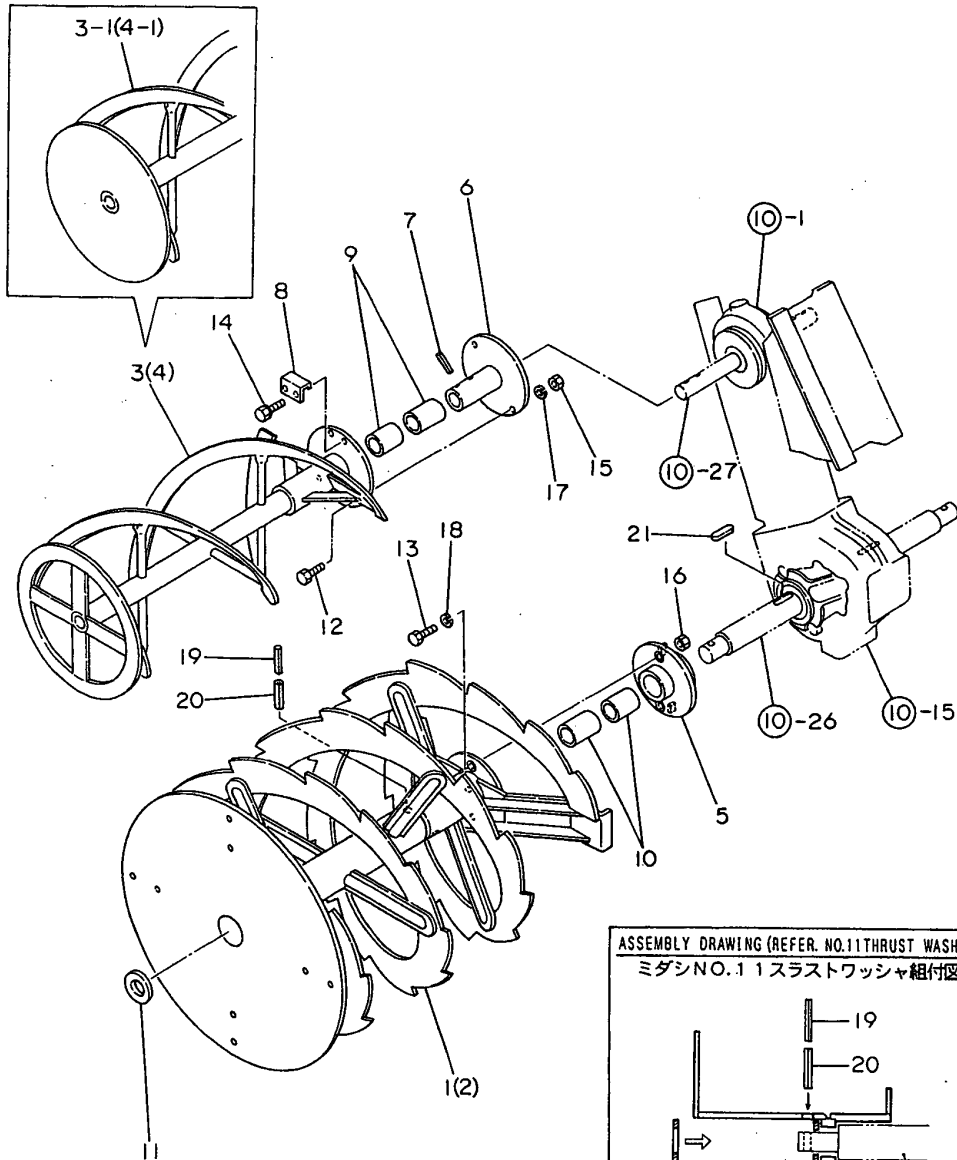
(A)=YSR1710H
(B)=YSR2110H
(C)=YSR2610H

(D)=YSR1710HE
(E)=YSR2110HE
(F)=YSR2610HE

No.	Lev.	Parts No.	Description	Q'ty						I	R
				(A)	(B)	(C)	(D)	(E)	(F)		
1	1	1N3073-49010	SHAFT,BLOWER		1			1			
2	1	1N3083-49010	SHAFT,BLOWER			1				1	
3	1	1N3093-49010	SHAFT,BLOWER	1			1				
4	1	1N3073-49040	COLLAR 30X25		1			1			
5	1	1N1673-61000	BLOWER COMPL.	1	1	1					
5-1	1	1N3073-61000	BLOWER COMPL.	1	1	1	1	1	1	1	R
		(A=F907501)	(B=F907501)	(C=F907501)							
6	1	1N1633-62001	JOINT,AUGER	1	1	1					
6-1	1	1N3073-62000	JOINT,AUGER	1	1	1	1	1	1	1	R
		(A=F907501)	(B=F907501)	(C=F907501)							
7	1	1N3073-69010	CASE,BLOWER BEARING		1	1		1	1		
8	1	1N3093-69010	CASE,BLOWER BEARING	1			1				
9	1	1N1600-74650	BOLT 10X30,MACHINE	1	1	1	1	1	1	1	
10	1	1N1600-72960	WASHER 8X35X3.2,RD.	1	1	1	1	1	1	1	
11	1	1N1600-75180	LINER ML2530	2	2	2	2	2	2	2	
12	1	26207-080254	BOLT 8X25	6	6	6	6	6	6	6	
13	1	26013-080204	BOLT M 8X 20	1	1	1	1	1	1	1	
14	1	26013-100254	BOLT, M10X 25	4	4	4	4	4	4	4	
15	1	26707-080002	NUT, M8	6	6	6	6	6	6	6	
16	1	26607-100002	NUT, M10	1	1	1	1	1	1	1	
17	1	22217-080000	WASHER, SPRING 8	6	6	6	6	6	6	6	
18	1	22252-000720	RING, 72	1	1	1	1	1	1	1	
19	1	24104-063064	BEARING, BALL 6306UU		2	2		2	2		
19A	1	24104-063054	BEARING, BALL 6305UU	2			2				
20	1	1N1600-72000	KEY 7X7X33 SS,FEATHR	2	2	2	2	2	2	2	
21	1	1N1866-39040	V-PULLEY 227B-3X25	1	1	1	1	1	1	1	

Fig.12. AUGER

12. AUGER



(A)=YSR1710H
(B)=YSR2110H
(C)=YSR2610H

(D)=YSR1710HE
(E)=YSR2110HE
(F)=YSR2610HE

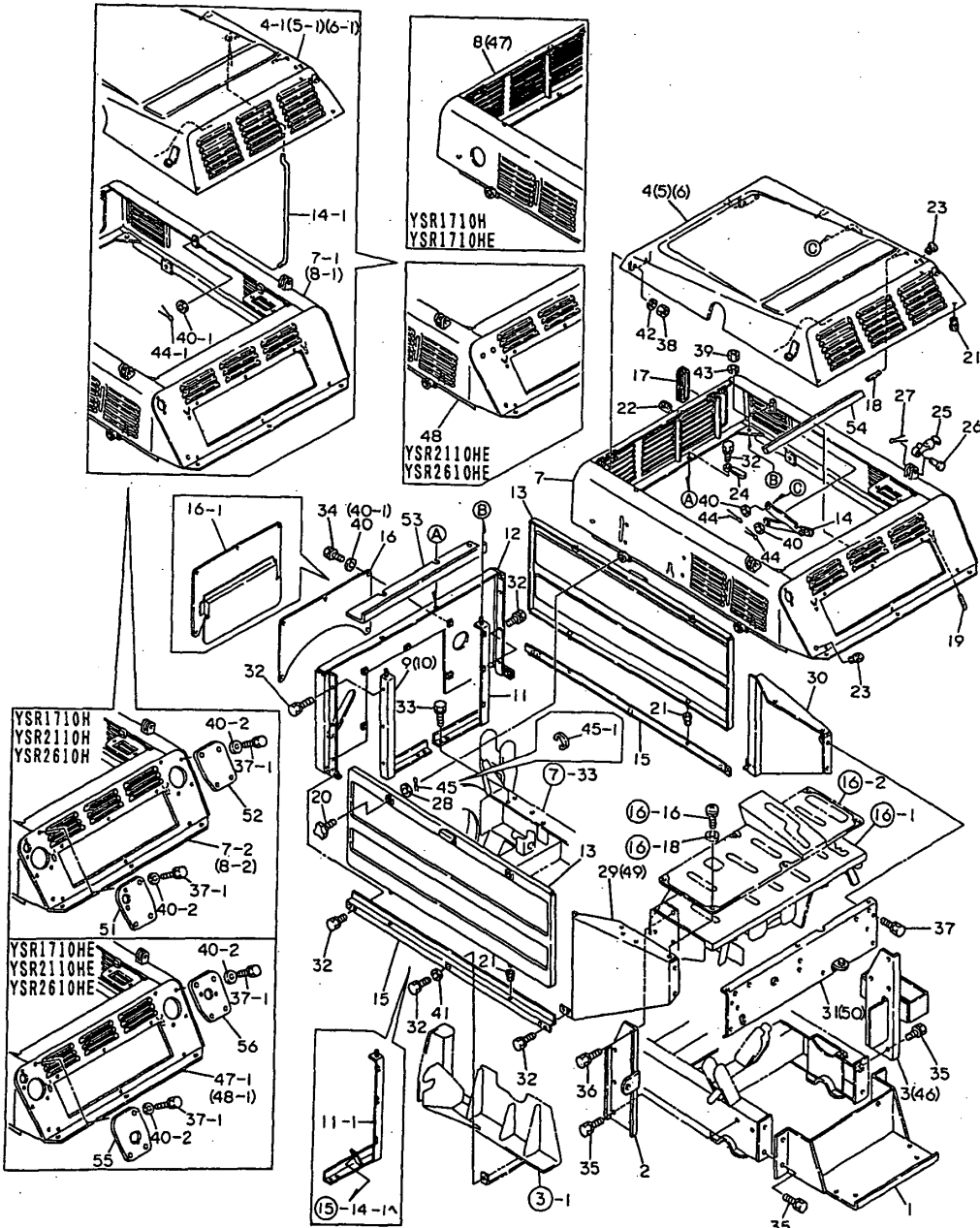
No.	Lev.	Parts No.	Description	Q'ty						I	R
				(A)	(B)	(C)	(D)	(E)	(F)		
1	1	1N1673-51001	AUGER L,LOWER STAGE	1	1	1	1	1	1		
2	1	1N1673-52001	AUGER R,LOWER STEP	1	1	1	1	1	1		
3	1	1N1650-70041	AUGER L CMP,UPPR.STG	1	1	1					
3-1	1	1N1600-75810 (A=F907501) (B=F907501) (C=F907501)	AUGER L CMP,UPPR.STG	1	1	1	1	1	1	1	R
4	1	1N1650-70051	AUGER R CMP,UPPR.STG	1	1	1					
4-1	1	1N1600-75820 (A=F907501) (B=F907501) (C=F907501)	AUGER R CMP,UPPR.STG	1	1	1	1	1	1	1	R
5	1	1N1863-55000	FLANGE CMP,AUGER SHR	2	2	2	2	2	2	2	
6	1	1N1633-57001	FLANGE,UPPER SHEAR	2	2	2	2	2	2	2	
7	1	1N1633-59021	PIN,SHEAR FLANGE SET	4	4	4	4	4	4	4	
8	1	1N1633-59030	STOPPER	2	2	2	2	2	2	2	
9	1	1N1600-75190	LINER ML3540	4	4	4	4	4	4	4	
10	1	1N1600-75200	LINER ML3550	4	4	4	4	4	4	4	
11	1	1N1639-19260	WASHER,THRUST	2	2	2	2	2	2	2	
12	1	26117-060254	BOLT M 6X 25 PLATED	12	12	12	12	12	12	12	
13	1	26207-100302	BOLT M10X 30 PLATED	12	12	12	12	12	12	12	
14	1	26013-080124	BOLT M 8X 12	4	4	4	4	4	4	4	
15	1	26707-060002	NUT, M6	12	12	12	12	12	12	12	
16	1	26707-100002	NUT, M10	12	12	12	12	12	12	12	
17	1	22217-060000	WASHER, SPRING 6	12	12	12	12	12	12	12	
18	1	22217-100000	WASHER, SPRING 10	12	12	12	12	12	12	12	
19	1	22351-060045	PIN, SPRING 6.0X45	2	2	2	2	2	2	2	
20	1	22351-010045	SPRING PIN 1.0X45	2	2	2	2	2	2	2	
21	1	1N1600-72080	KEY 10X8X40 RR,FTHR.	2	2	2	2	2	2	2	

Fig.13. COVERS

(A)=YSR1710H
(B)=YSR2110H
(C)=YSR2610H

(D)=YSR1710HE
(E)=YSR2110HE
(F)=YSR2610HE

13. COVERS



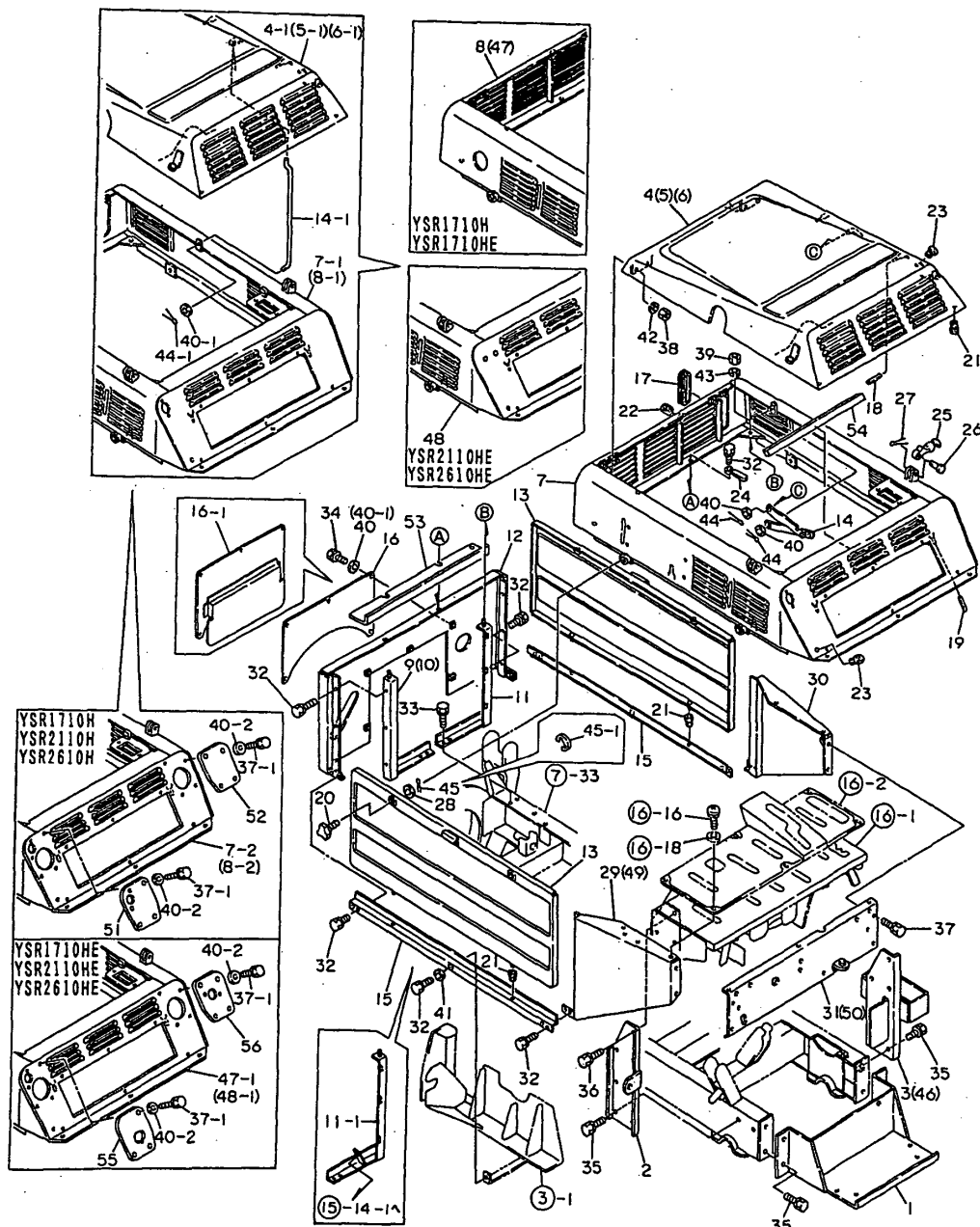
N062665

No.	Lev.	Parts No.	Description	Qty						I	R
				(A)	(B)	(C)	(D)	(E)	(F)		
1	1	1N3074-12000	BASE COMP.,BATTERY	1	1	1	1	1	1		
2	1	1N3074-13000	BRACKET L CMP.,PANEL	1	1	1	1	1	1		
3	1	1N3074-14000	BRACKET R CMP.,PANEL		1	1			1	1	
4	1	1N3074-81000	HOOD		1						
4-1	1	1N3074-81001	HOOD (B=F907611)		1				1		S
5	1	1N3084-81000	HOOD			1					
5-1	1	1N3084-81001	HOOD (C=F907741)			1				1	S
6	1	1N3094-81000	HOOD	1							
6-1	1	1N3094-81001	HOOD (A=F907501)	1			1				S
7	1	1N3074-82000	COVER ASSY,GEAR CASE		1	1					
7-1	1	1N3074-82001	COVER ASSY,GEAR CASE (B=F907611) (C=F907611)		1	1					S
7-2	1	1N3074-82002	COVER ASSY,GEAR CASE (B=F201559) (C=F201563)		1	1					S
8	1	1N3094-82000	COVER ASSY,GEAR CASE	1							
8-1	1	1N3094-82001	COVER ASSY,GEAR CASE (A=F907501)	1							S
8-2	1	1N3094-82002	COVER ASSY,GEAR CASE (A=F201553)	1							S
9	1	1N1600-75210	STAY L COMP.,COVER	1	1		1	1			
10	1	1N3084-82000	STAY L COMP.,COVER			1				1	
11	1	1N1600-75220	STAY R COMP.,COVER	1	1	1	1	1	1		
11-1	1	1N3074-84000	STAY R COMP.,COVER (A=F305341) (B=F305391) (C=F305441) (D=F305341) (E=F305391) (F=F305441)	1	1	1	1	1	1	1	N
12	1	1N1864-84001	COVER COMP.,FRONT	1	1	1	1	1	1		
12-1	1	1N1864-84001-1	COVER COMP.,FRONT (D=F305341) (E=F305391) (F=F305441)								1 S
13	1	1N1600-75230	COVER (R)ASSY, SIDE	2	2	2	2	2	2		
13-1	1	1N1600-75230-1	COVER (R)ASSY, SIDE (D=F305341) (E=F305391) (F=F305441)								2 S
14	1	1N1674-88001	STAY,BONNET	1	1	1					
14-1	1	1N3074-89010	STAY,BONNET (A=F907501) (B=F907501) (C=F907501)	1	1	1	1	1	1	1	S
15	1	1N1864-89010	STAY,UNDER	2	2	2	2	2	2		
15-1	1	1N1864-89010-1	STAY,UNDER (D=F305341) (E=F305391) (F=F305441)								2 S
16	1	1N3074-89020	COVER,FRONT BELT	1	1	1					
16-1	1	1N3074-83000	COVER,FRONT BELT (A=F907501) (B=F907501) (C=F907501)	1	1	1	1	1	1	1	N
16-2	1	1N3074-83000-1	COVER,FRONT BELT (D=F305341) (E=F305391) (F=F305441)								1 S
17	1	1N3074-89030	RUBBER 8X360,CHANNEL	1	1	1	1	1	1		
18	1	1N1600-70390	COVER,CLAMP	5	5	5	5	5	5		
19	1	1N1838-69010	COVER 70,CLAMP	2	2	2	2	2	2		
20	1	1N1609-11040	THUMBSCREW	4	4	4					
20-1	1	1N3154-89040	THUMB SCREW 8X20 (A=F104371) (B=F104371) (C=F104371)	4	4	4	4	4	4	4	S 2
21	1	1N1600-75240	BUSH B-6-3,RUBBER	6	6	6	6	6	6		

N:Old $\frac{Yes}{No}$ New, Q:Old $\frac{No}{Yes}$ New, R:Old $\frac{Yes}{No}$ New, S:Old $\frac{No}{Yes}$ New, W:Add, Z:Discontinued, F:Interchangeable by set, K:Q'ty Change
++ CONTINUE ++
Copyright (C) YANMAR CO., LTD. All Rights Reserved.

Fig.13. COVERS

13. COVERS



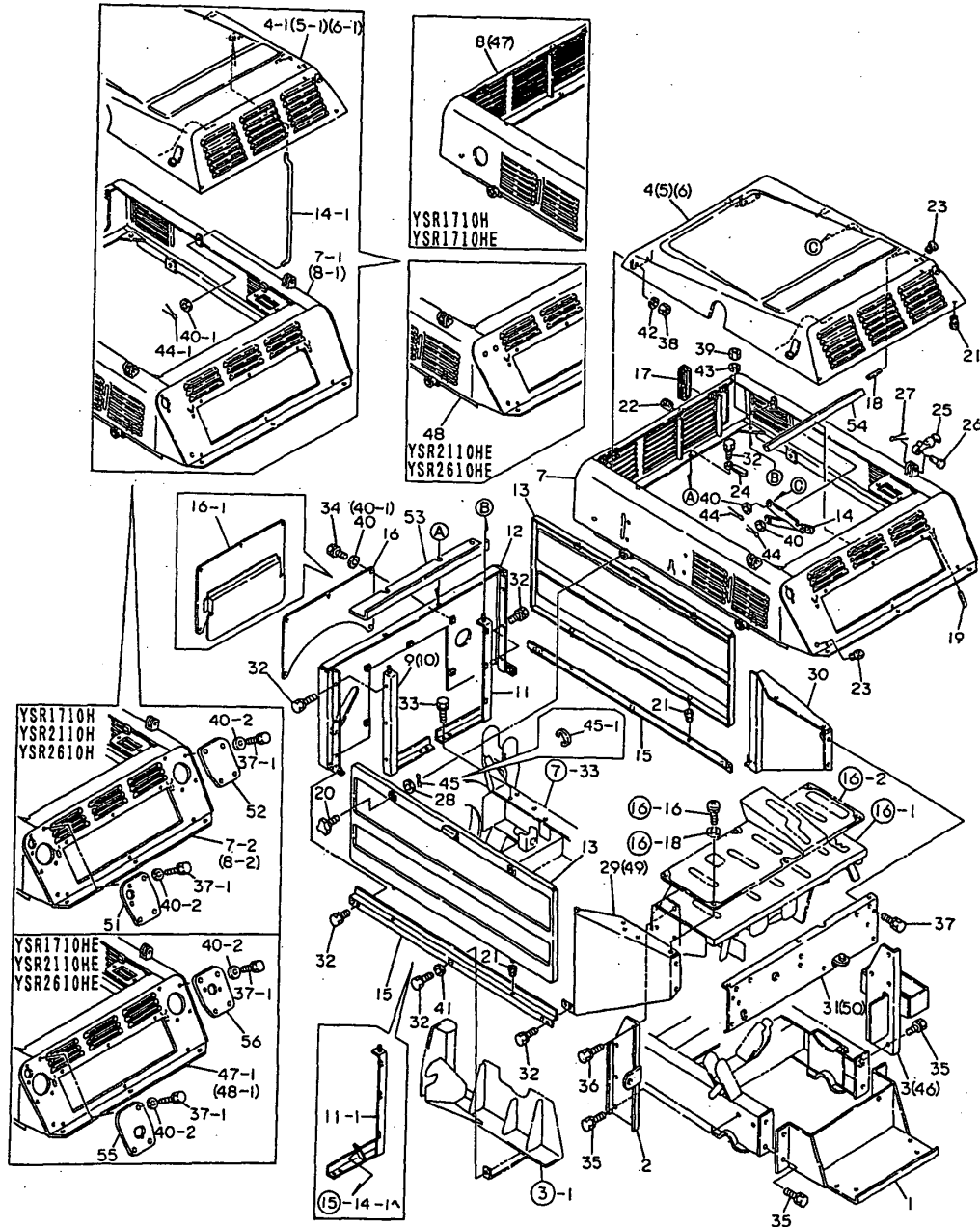
(A)=YSR1710H
 (B)=YSR2110H
 (C)=YSR2610H
 (D)=YSR1710HE
 (E)=YSR2110HE
 (F)=YSR2610HE

No.	Lev.	Parts No.	Description	Q'ty						I	R
				(A)	(B)	(C)	(D)	(E)	(F)		
22	1	1N1600-75250	BUSH BSD-4,RUBBER	1	1	1	1	1	1		
23	1	1N1600-74140	BUSH BSB-21,RUBBER	2	2	2	2	2	2		
24	1	1N1600-75120	CLAMP 8X80,CORD	3	3	3	3	3	3		
25	1	1N1689-17030	CATCH,RUBBER HOOD	2	2	2	2	2	2		
26	1	1N1689-17040	PIN,ROUND HEAD	2	2	2	2	2	2		
27	1	1N1689-17050	PIN,COTTER	2	2	2	2	2	2		
28	1	1N1600-70210	WASHER 8X25X2,ROUND	4	4	4	4	4	4		
29	1	1N3077-81000	REAR L COMP.,COVER	1	1	1					
30	1	1N3077-82000	REAR R COMP.,COVER	1	1	1	1	1	1		
30-1	1	1N3077-82000-1	REAR R COMP.,COVER				1	1	1		S
			(D=F305341)				(E=F305391)		(F=F305441)		
31	1	1N3077-83000	REAR COMP.,COVER	1	1	1					
32	1	1N1600-74480	BOLT W/WASHER 8* 20	18	18	18	18	18	18		
33	1	26013-080204	BOLT M 8X 20	4	4	4	4	4	4		
34	1	1N1600-74410	BOLT M 6X 16	5	5	5	5	5	5		
35	1	26013-100254	BOLT, M10X 25	8	8	8	8	8	8		
36	1	26013-100204	BOLT M10X 20	6	6	6	6	6	6		
37	1	1N1600-74410	BOLT M 6X 16	4	4	4	4	4	4		
37-1	1	1N1600-74410	BOLT M 6X 16	11	11	11	12	12	12		K
			(A=F201553)				(B=F201559)		(C=F201563)		
38	1	26707-060002	NUT, M6	4	4	4	4	4	4		
39	1	26607-080002	NUT, M8	2	2	2	2	2	2		
40	1	22137-060000	WASHER, 6	7	7	7					
40-1	1	22137-060000	WASHER, 6	6	6	6	6	6	6		K
			(A=F907501)				(B=F907501)		(C=F907501)		
40-2	1	22137-060000	WASHER, 6	13	13	13	14	14	14		K
			(A=F201553)				(B=F201559)		(C=F201563)		
41	1	22137-080000	WASHER, 8	2	2	2	2	2	2		
42	1	22217-060000	WASHER, SPRING 6	4	4	4	4	4	4		
43	1	22217-080000	WASHER, SPRING 8	2	2	2	2	2	2		
44	1	22417-200160	PIN, COTTER 2.0X16	2	2	2					
44-1	1	22417-200160	PIN, COTTER 2.0X16	1	1	1	1	1	1		K
			(A=F907501)				(B=F907501)		(C=F907501)		
45	1	22417-250160	PIN, COTTER 2.5X16	4	4	4					
45-1	1	22272-000060	RING, E- 6	4	4	4	4	4	4		S
			(A=F104371)				(B=F104371)		(C=F104371)		
46	1	1N3094-14000	BRACKET R CMP.,PANEL	1			1				
47	1	1N3094-83000	COVER, AIR CLEANER				1				1
47-1	1	1N3094-82002	COVER ASSY,GEAR CASE				1				F
			(D=F201553)								
48	1	1N3074-88000	COVER, AIR CLEANER					1	1		
48-1	1	1N3074-82002	COVER ASSY,GEAR CASE					1	1		S
			(E=F201559)					(F=F201563)			
49	1	1N3077-84000	REAR COMP.,COVER					1	1		
49-1	1	1N3077-84000-1	REAR COMP.,COVER					1	1		S
			(D=F305341)				(E=F305391)		(F=F305441)		
50	1	1N3077-85000	REAR COMP.,COVER					1	1		
50-1	1	1N3077-85000-1	REAR COMP.,COVER					1	1		S
			(D=F305341)				(E=F305391)		(F=F305441)		
51	1	1N3074-89050	LID L,COVER	1	1	1					W
			(A=F201553)				(B=F201559)		(C=F201563)		

N:Old $\frac{Yes}{No}$ New, Q:Old $\frac{Yes}{No}$ New, R:Old $\frac{Yes}{No}$ New, S:Old $\frac{Yes}{No}$ New, W:Add, Z:Discontinued, F:Interchangeable by set, K:Q'ty Change
 ++ CONTINUE ++
 Copyright (C) YANMAR CO., LTD. All Rights Reserved.

Fig.13. COVERS

13. COVERS



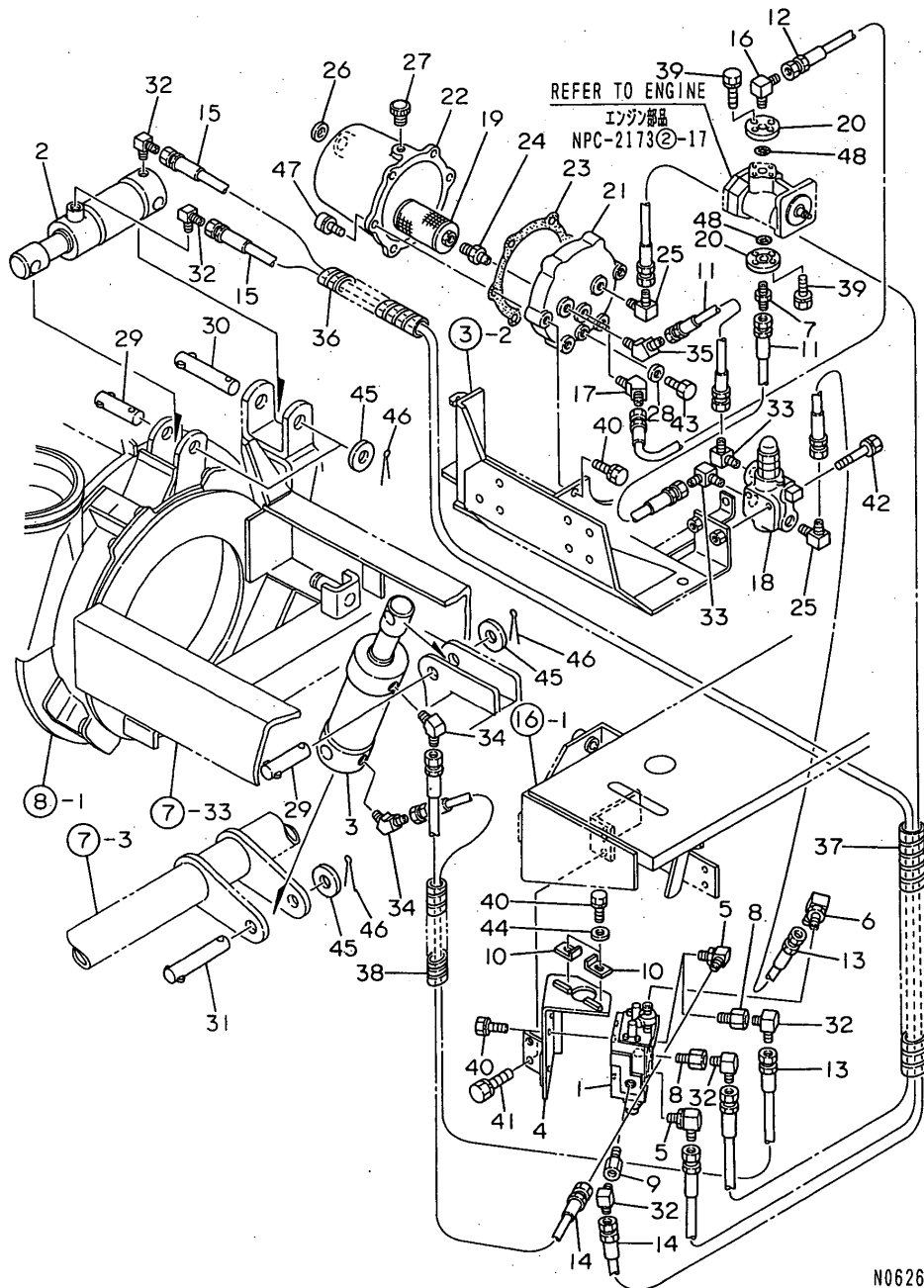
N062665

(A)=YSR1710H (D)=YSR1710HE
 (B)=YSR2110H (E)=YSR2110HE
 (C)=YSR2610H (F)=YSR2610HE

No.	Lev.	Parts No.	Description	Q'ty						I	R
				(A)	(B)	(C)	(D)	(E)	(F)		
52	1	1N3074-89060 (A=F201553) (B=F201559) (C=F201563)	LID R,COVER	1	1	1					W
53	1	1N3074-89090	COVER	1	1	1	1	1	1	1	W
54	1	1N3078-69020 (A=F402281) (B=F402321) (C=F402371)	SPONGE 10X450	1	1	1	1	1	1	1	W
55	1	1N3074-89070 (D=F201553)	BASE,LEVER SWITCH					1	1	1	W
56	1	1N3074-89080 (D=F201553)	BASE,PANEL LAMP					1	1	1	W

Fig.14. HYDRAULIC PIPING

14. HYDRAULIC PIPING



(A)=YSR1710H
(B)=YSR2110H
(C)=YSR2610H

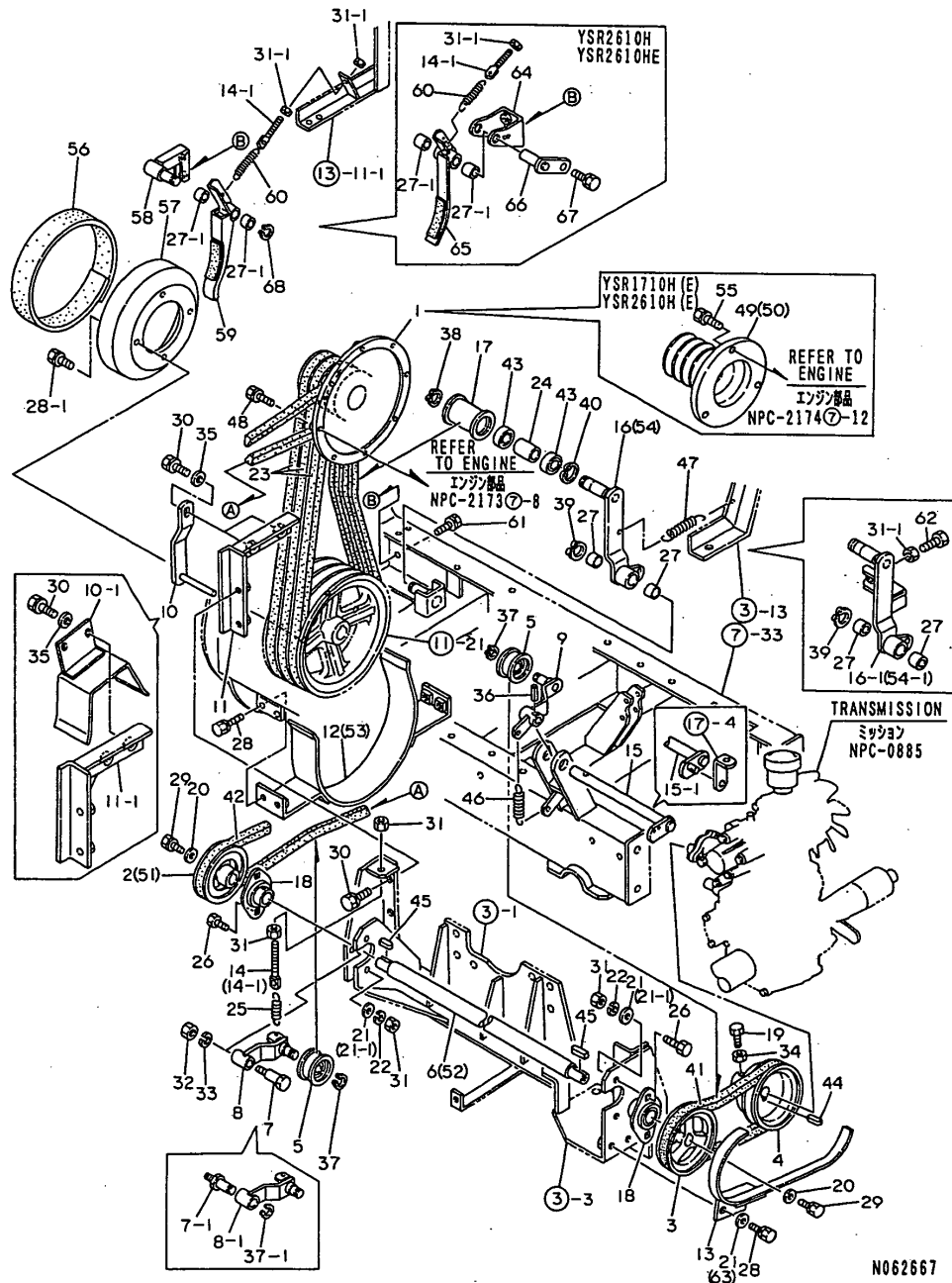
(D)=YSR1710HE
(E)=YSR2110HE
(F)=YSR2610HE

No.	Lev.	Parts No.	Description	Qty						I	R
				(A)	(B)	(C)	(D)	(E)	(F)		
1	1	1N1675-00040	VALVE,CONTROL	1	1	1	1	1	1		
2	1	1N1675-00050	CYLINDER 50X60	1	1	1	1	1	1		
3	1	1N3075-00010	CYLINDER 60X115	1	1	1	1	1	1		
4	1	1N3075-12000	BASE COMPL.,VALVE	1	1	1	1	1	1		
5	1	1N1635-19010	ELBOW 1/4X1/4 W/SEAT	2	2	2	2	2	2		
6	1	1N1675-19010	ELBOW 3/8X1/4 W/SEAT	1	1	1	1	1	1		
7	1	1N3075-19010	ADAPTER 3/8,HOSE	1	1	1	1	1	1		
8	1	1N1625-19010	JOINT 1/4X1/4	2	2	2	2	2	2		
9	1	1N1625-19020	JOINT 1/4X3/8	1	1	1	1	1	1		
10	1	1N1675-19020	STOPPER,HYDRO.LEVER	2	2	2	2	2	2		
11	1	1N1886-77000	HOSE 260,HYDRAULIC	2	2	2	2	2	2		
12	1	1N3075-73000	HOSE 1/2X420 CMP,HYD	1	1	1	1	1	1		
13	1	1N1600-72540	HOSE 1080 CMP,HYDRO.	2	2	2	2	2	2		
14	1	1N3075-75000	HOSE 1/4X1250 CMP,HY	2	2	2	2	2	2		
15	1	1N3075-76000	HOSE 1/4X1700 CMP,HY	2	2	2	2	2	2		
16	1	1N3075-99010	ELBOW 90 1/2X3/8	1	1	1	1	1	1		
17	1	1N3075-99020	ELBOW 45 1/2X3/8	1	1	1	1	1	1		
18	1	1N1886-71000	VALVE VRD-0300,RELF.	1	1	1	1	1	1		
19	1	1N1886-72000	FILTER NSP-03,SUC.	1	1	1	1	1	1		
20	1	1N1886-79020	FLANGE,HYDRAULIC	2	2	2	2	2	2		
21	1	1N1886-79030	PLATE,OIL TANK	1	1	1	1	1	1		
22	1	1N1886-79040	CASE,OIL TANK	1	1	1	1	1	1		
23	1	1N1886-79050	PACKING,OIL TANK	1	1	1	1	1	1		
24	1	1N1886-79060	NIPPLE SNP03-000J	1	1	1	1	1	1		
25	1	1N1886-79080	ELBOW 90 1/4X3/8	2	2	2	2	2	2		
26	1	1N1886-79090	GAUGE B 308,OIL	1	1	1	1	1	1		
27	1	1N1600-75060	CAP,OIL	1	1	1	1	1	1		
28	1	1N1600-75260	PACKING 8X16X2,RD.CU	1	1	1	1	1	1		
29	1	1N1600-74380	PIN 20X75	2	2	2	2	2	2		
30	1	1N1600-74660	PIN 20X100,SLOTTED	1	1	1	1	1	1		
31	1	1N1600-74670	PIN 20X110,SLOTTED	1	1	1	1	1	1		
32	1	1N1600-75020	ELBOW 90 302204	5	5	5	5	5	5		
33	1	1N1600-75340	ELBOW 90 302206	2	2	2	2	2	2		
34	1	1N1600-74340	ELBOW 45 302404	2	2	2	2	2	2		
35	1	1N1600-75350	ELBOW 45 302406	1	1	1	1	1	1		
36	1	1N1600-75360	PLUMMER 15X200	3	3	3	3	3	3		
37	1	1N1600-75370	PLUMMER 15X300	1	1	1	1	1	1		
38	1	1N1600-75380	PLUMMER 15X400	1	1	1	1	1	1		
39	1	1N1600-74680	BOLT 6X25 W/SP.WSHR.	8	8	8	8	8	8		
40	1	26013-080204	BOLT M 8X 20	9	9	9	9	9	9		
41	1	26013-100254	BOLT, M10X 25	2	2	2	2	2	2		
42	1	1N1600-74690	BOLT 8X55 W/SP.WSHR.	2	2	2	2	2	2		
43	1	1N1600-74700	BOLT 8X10	1	1	1	1	1	1		
44	1	22137-080000	WASHER, 8	2	2	2	2	2	2		
45	1	22137-200000	WASHER, 20	4	4	4	4	4	4		
46	1	22417-400320	PIN, COTTER 4.0X32	4	4	4	4	4	4		
47	1	1N1600-74710	SCREW 6X20,PAN HD.MC	6	6	6	6	6	6		
48	1	24315-000200	O-RING, 1BP20.0	2	2	2	2	2	2		

N062666

Fig.15. POWER TRANSMISSION

15. POWER TRANSMISSION



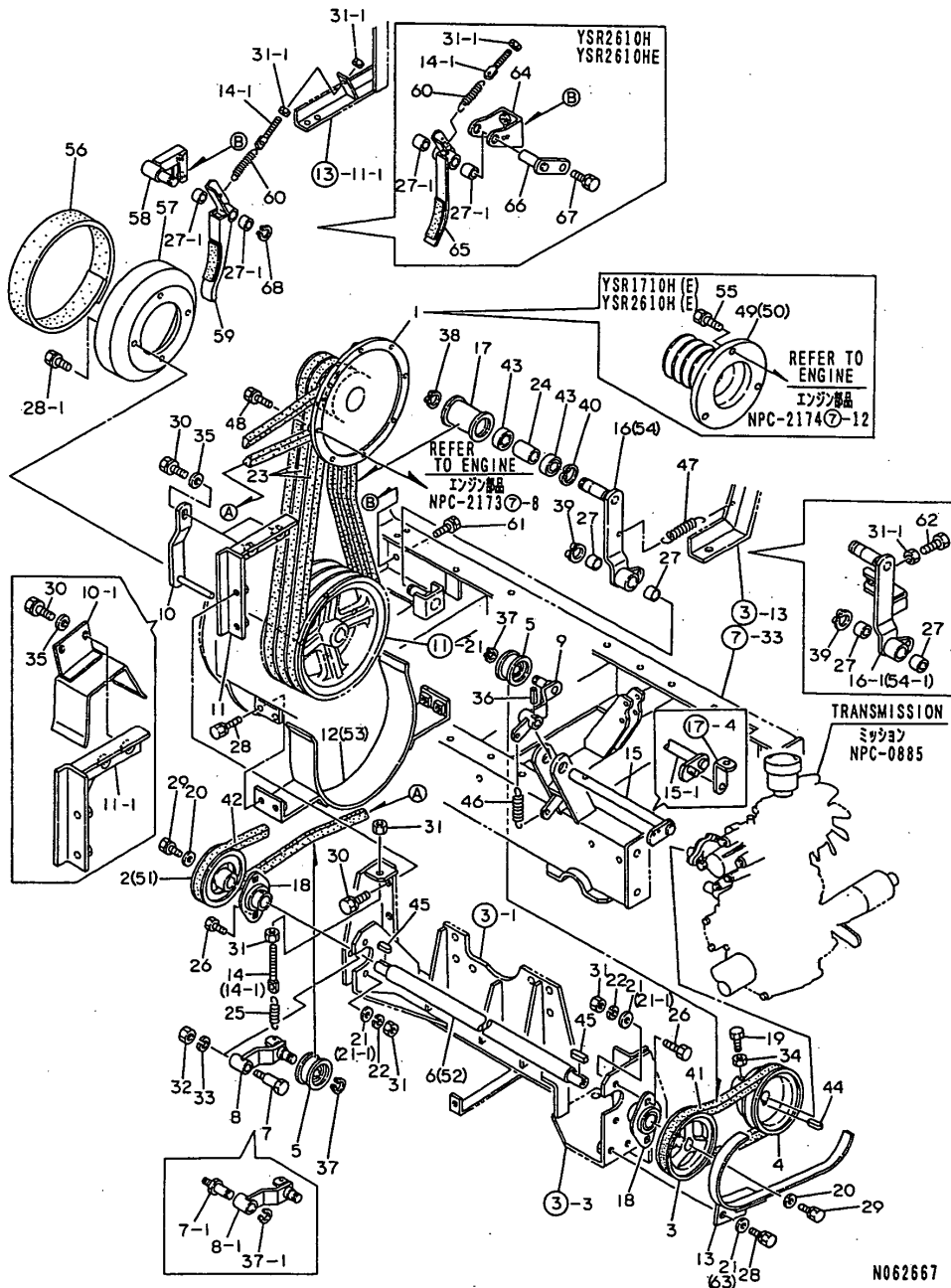
N062667

(A)=YSR1710H
(B)=YSR2110H
(C)=YSR2610H
(D)=YSR1710HE
(E)=YSR2110HE
(F)=YSR2610HE

No.	Lev.	Parts No.	Description	Q'ty						I	R
				(A)	(B)	(C)	(D)	(E)	(F)		
1	1	1N1860-29060	PULLEY,ENGINE		1			1			
2	1	1N3076-39010	V-PULLEY 94B-20	1	1			1	1		
3	1	1N3076-39020	V-PULLEY 110A-20	1	1	1	1	1	1	1	
4	1	1N3076-39030	V-PULLEY 105A-17	1	1	1	1	1	1	1	
5	1	1N1600-71520	PULLEY,TENSION	2	2	2	2	2	2	2	
6	1	1N3076-49010	SHAFT, COUNTER	1	1			1	1		
7	1	1N3076-49020	SHAFT,TENSION	1	1	1					
7-1	1	1N3076-49021	SHAFT,TENSION	1	1	1	1	1	1	1	S
		(A=F104371) (B=F104371) (C=F104371)									
8	1	1N3076-51000	ARM CMP,COUNTER TENS	1	1	1					
8-1	1	1N3076-51001	ARM CMP,COUNTER TENS	1	1	1	1	1	1	1	S
		(A=F104371) (B=F104371) (C=F104371)									
9	1	1N3076-52000	ARM CMP,TRAVEL CLTCH	1	1	1	1	1	1	1	
10	1	1N3076-53000	STOPPER CMP,ENG.BELT	2	2	2					
10-1	1	1N3076-53001	STOPPER CMP,ENG.BELT	2	2	2	2	2	2	2	S
		(A=F104371) (B=F104371) (C=F104371)									
11	1	1N3076-54000	BASE CMP,BELT STOPPR	1	1	1					
11-1	1	1N3076-54001	BASE CMP,BELT STOPPR	1	1	1	1	1	1	1	S
		(A=F104371) (B=F104371) (C=F104371)									
12	1	1N3076-55000	STOPPER,BLOWER BELT	1	1			1	1		
13	1	1N3076-56000	STOPPER,COUNTER BELT	1	1	1	1	1	1	1	
14	1	1N1636-59010	SCREW,TENSION ADJUST	1	1	1	1	1	1	1	
14-1	1	1N1636-59010	SCREW,TENSION ADJUST	2	2	2	2	2	2	2	K
		(A=F305341) (B=F305391) (C=F305441) (D=F305341) (E=F305391) (F=F305441)									
15	1	1N3076-61000	ROD,TRAVEL CLUTCH	1	1	1	1	1	1	1	
15-1	1	1N3076-61001	ROD,TRAVEL CLUTCH	1	1	1	1	1	1	1	S
		(A=F402281) (B=F402321) (C=F402371) (D=F402281) (E=F402321) (F=F402371)									
16	1	1N3076-64000	ARM CMP,TENS.CLUTCH	1	1			1	1		
16-1	1	1N3076-64001	ARM CMP,TENS.CLUTCH	1	1			1	1	1	S
		(A=F305341) (B=F305391) (D=F305341) (E=F305391)									
17	1	1N1636-69020	PULLEY,TENSION	1	1	1	1	1	1	1	
18	1	1N1600-75270	FLANGE UNIT,RHOMBIC	2	2	2	2	2	2	2	
19	1	1N1600-74720	BOLT 6X20,MACHINE	1	1	1	1	1	1	1	
20	1	1N1600-74730	WASHER 8X30X4.5,RD.	2	2	2	2	2	2	2	
21	1	22137-080000	WASHER, 8	6	6	6	6	6	6	6	
21-1	1	22137-080000	WASHER, 8	4	4	4	4	4	4	4	K
		(A=F305341) (B=F305391) (C=F305441) (D=F305341) (E=F305391) (F=F305441)									
22	1	22217-080000	WASHER, SPRING 8	4	4	4	4	4	4	4	
23	1	1N1679-17041	BELT RCLBS-42,PADDLE	3	3	3	3	3	3	3	
24	1	1N1639-19060	COLLAR 17X39.8	1	1	1	1	1	1	1	
25	1	1N1600-70260	SPRING,MAIN CLUTCH	1	1	1					
25-1	1	1N1679-19010	SPRING,TENSION	1	1	1	1	1	1	1	N
		(A=F104371) (B=F104371) (C=F104371)									
26	1	1N1600-74740	BOLT 8X25	4	4	4	4	4	4	4	
27	1	1N1600-75280	LINER ML2015	2	2	2	2	2	2	2	
27-1	1	1N1600-75280	LINER ML2015	4	4	4	4	4	4	4	K
		(A=F305341) (B=F305391) (C=F305441) (D=F305341) (E=F305391) (F=F305441)									
28	1	26013-080204	BOLT M 8X 20	6	6	6	6	6	6	6	
28-1	1	26013-080204	BOLT M 8X 20	10	10	10	10	10	10	10	K
		(A=F305341) (B=F305391) (C=F305441) (D=F305341) (E=F305391) (F=F305441)									
29	1	1N1600-74520	BOLT 8X20 W/SP.WSHR.	2	2	2	2	2	2	2	

Fig.15. POWER TRANSMISSION

15. POWER TRANSMISSION

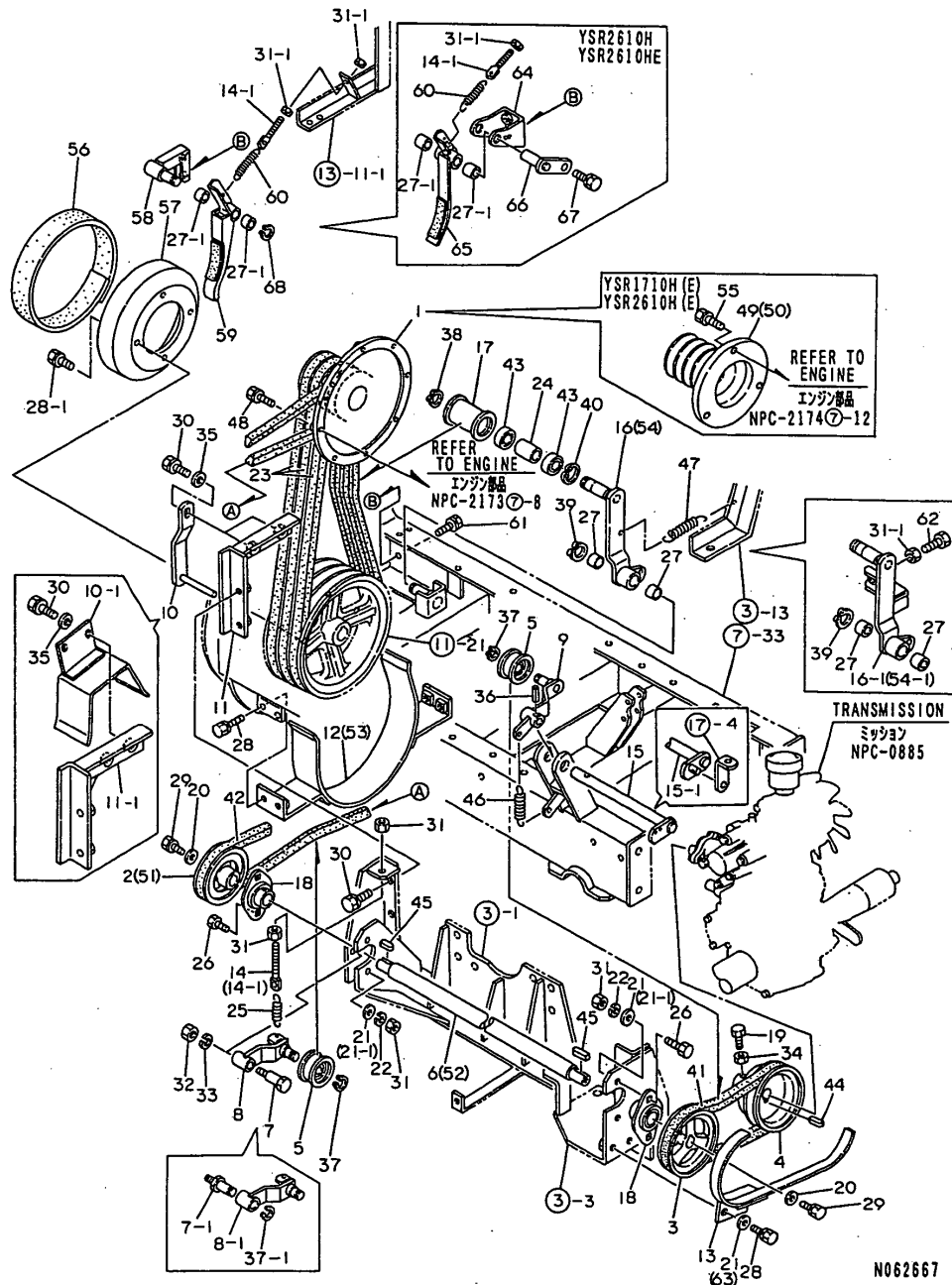


N062667

No.	Lev.	Parts No.	Description	Q'ty						I	R
				(A)	(B)	(C)	(D)	(E)	(F)		
30	1	26013-100254	BOLT, M10X 25	4	4	4	4	4	4		
31	1	26607-080002	NUT, M8	6	6	6	6	6	6		
31-1	1	26607-080002	NUT, M8	9	9	9	9	9	9		K
		(A=F305341) (B=F305391) (C=F305441) (D=F305341)		(E=F305391)		(F=F305441)					
32	1	26607-100002	NUT, M10	1	1	1	1	1	1		
33	1	22217-100000	WASHER, SPRING 10	1	1	1	1	1	1		
34	1	26707-060002	NUT, M6	1	1	1	1	1	1		
35	1	22137-100000	WASHER, 10	2	2	2	2	2	2		
36	1	22351-060022	PIN, SPRING 6.0X22	1	1	1	1	1	1		
37	1	22242-000150	RING, 15	2	2	2					
37-1	1	22242-000150	RING, 15	3	3	3	3	3	3		K
		(A=F104371) (B=F104371) (C=F104371)									
38	1	22242-000170	RING, 17	1	1	1	1	1	1		
39	1	22242-000200	RING, 20	1	1	1	1	1	1		
40	1	22242-003500	RING, 35	1	1	1	1	1	1		
41	1	1N1600-75330	V-BELT LA-32	1	1	1	1	1	1		
42	1	25123-003200	V-BELT, B32	1	1	1	1	1	1		
43	1	24104-060034	BEARING, BALL 6003UU	2	2	2	2	2	2		
44	1	22550-050220	KEY 5X22	1	1	1	1	1	1		
45	1	22550-060250	KEY 6X6X25,FEATHER	2	2	2	2	2	2		
46	1	1N3089-16010	SPRING 11X68,COILED	1	1	1	1	1	1		
47	1	1N1600-70310	SPRING,TENSIONER	1	1	1	1	1	1		
48	1	1N1600-74750	BOLT 8X25 W/SP.WSHR.		8				8		
49	1	1N3090-29010	PULLEY	1			1				
50	1	1N1870-29030	PULLEY,ENGINE			1				1	
51	1	1N3086-39010	V-PULLEY 92B-20			1				1	
52	1	1N3086-49010	SHAFT, COUNTER			1				1	
53	1	1N3086-55000	STOPPER CMP,BLW.BELT			1				1	
54	1	1N3086-64000	ARM CMP,TENS.CLUTCH			1				1	
54-1	1	1N3086-64001	ARM CMP,TENS.CLUTCH			1				1	S
		(C=F305441)								(F=F305441)	
55	1	1N1600-74760	BOLT 12X30 W/SP.WSHR	3		3		3		3	
56	1	1N3156-59030	SPONGE 40X600	1	1	1	1	1	1	1	W
		(A=F305341) (B=F305391) (C=F305441) (D=F305341)		(E=F305391)		(F=F305441)					
57	1	1N3106-59010	BRAKE DRUM	1	1	1	1	1	1	1	W
		(A=F305341) (B=F305391) (C=F305441) (D=F305341)		(E=F305391)		(F=F305441)					
58	1	1N3076-57000	BRACKET COMP.,BRAKE	1	1		1	1			W
		(A=F305341) (B=F305391)		(D=F305341)		(E=F305391)					
59	1	1N3076-58000	BRAKE COMP.,BLOWER	1	1		1	1			W
		(A=F305341) (B=F305391)		(D=F305341)		(E=F305391)					
60	1	1N1619-16010	SPRING, TENSION	1	1	1	1	1	1	1	W
		(A=F305341) (B=F305391) (C=F305441) (D=F305341)		(E=F305391)		(F=F305441)					
61	1	26013-100204	BOLT M10X 20	2	2	2	2	2	2	2	W
		(A=F305341) (B=F305391) (C=F305441) (D=F305341)		(E=F305391)		(F=F305441)					
62	1	26117-080504	BOLT M 8X 50 PLATED	1	1	1	1	1	1	1	W
		(A=F305341) (B=F305391) (C=F305441) (D=F305341)		(E=F305391)		(F=F305441)					
63	1	1N1600-77260	WASHER 8X25X2.3,CIRC	2	2	2	2	2	2	2	W
		(A=F305341) (B=F305391) (C=F305441) (D=F305341)		(E=F305391)		(F=F305441)					
64	1	1N3086-52000	BRACKET COMP.,BRAKE			1				1	W
		(C=F305441)								(F=F305441)	
65	1	1N3086-51000	BRAKE COMP.,BLOWER			1					W

Fig.15. POWER TRANSMISSION

15. POWER TRANSMISSION



N062667

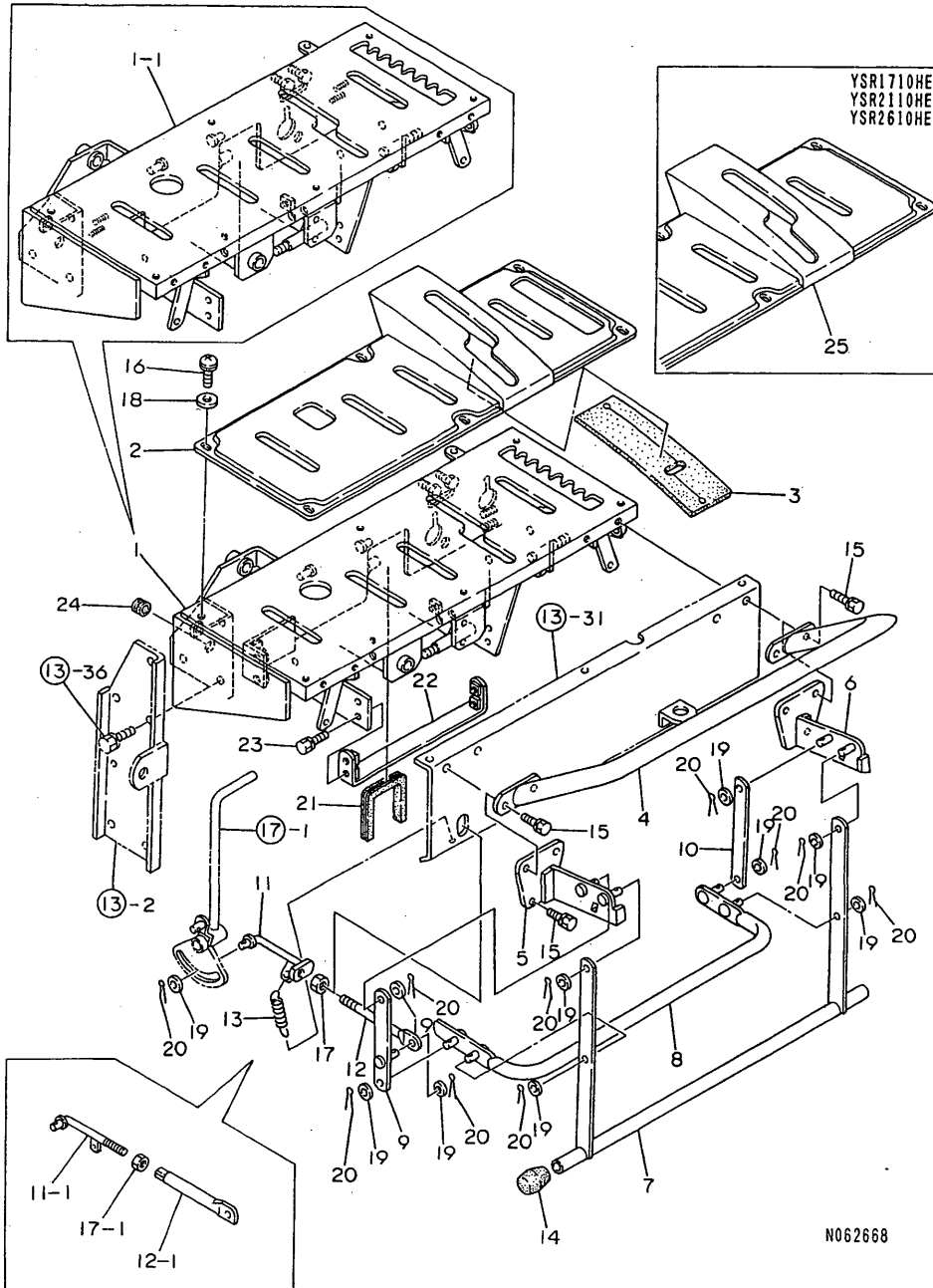
(A)=YSR1710H
(B)=YSR2110H
(C)=YSR2610H

(D)=YSR1710HE
(E)=YSR2110HE
(F)=YSR2610HE

No.	Lev.	Parts No.	Description	Q'ty						I	R
				(A)	(B)	(C)	(D)	(E)	(F)		
66	1	1N3086-53000	SHAFT COMP.,BRAKE (C=F305441)			1				1	W
67	1	26013-060202	BOLT, M6X 20 (C=F305441)			1				1	W
68	1	22242-000200	RING, 20 (C=F305441)			1	1		1	1	W
		(A=F305341)	(B=F305391)	(D=F305341)	(E=F305391)						

Fig.16. PANEL & HANDLE

16. PANEL & HANDLE



(A)=YSR1710H
(B)=YSR2110H
(C)=YSR2610H

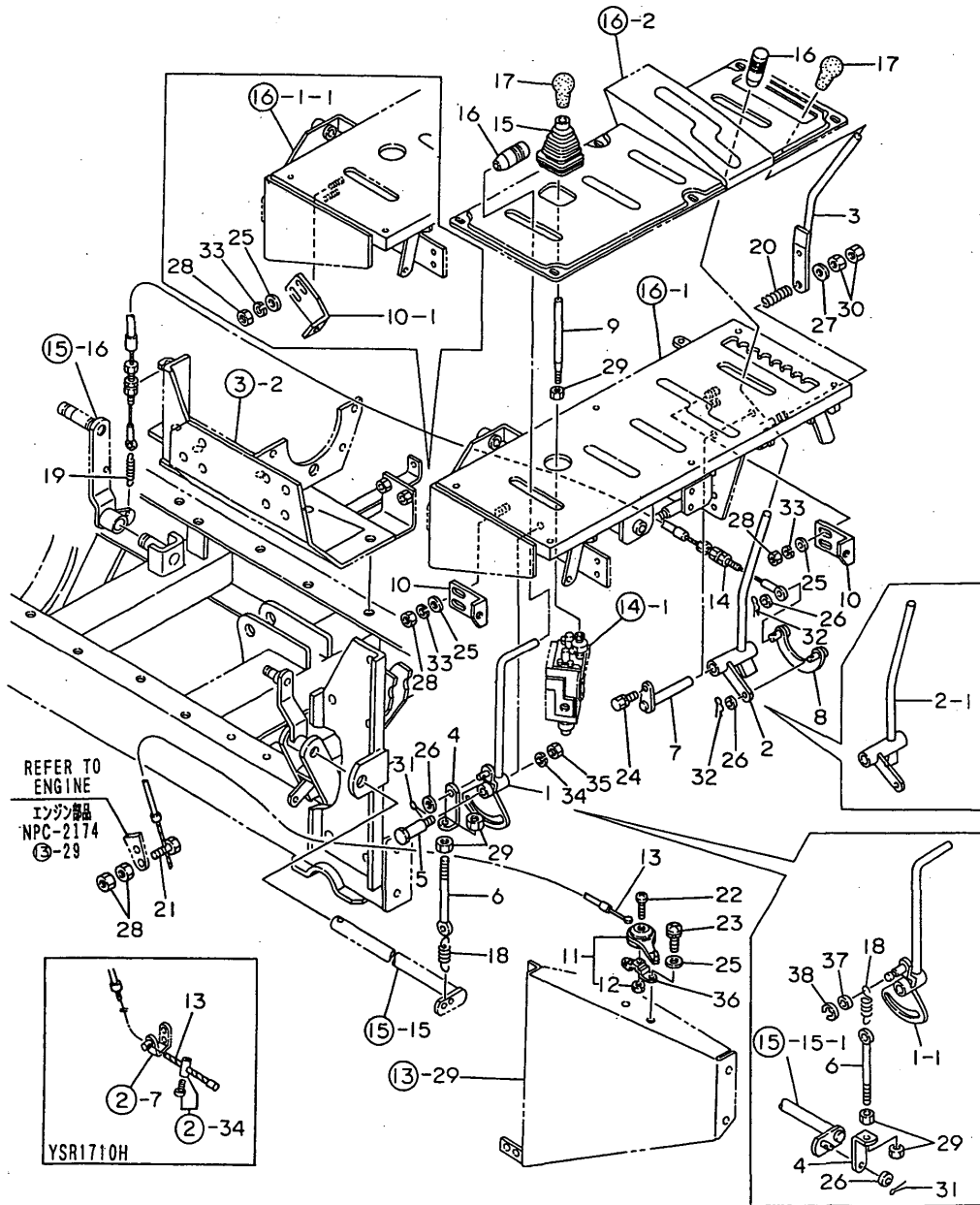
(D)=YSR1710HE
(E)=YSR2110HE
(F)=YSR2610HE

No.	Lev.	Parts No.	Description	Qty						I	R
				(A)	(B)	(C)	(D)	(E)	(F)		
1	1	1N3077-21000	PANEL ASSY, CONTROL	1	1	1					
1-1	1	1N3077-21001	PANEL ASSY, CONTROL	1	1	1	1	1	1	1	S
		(A=F907501) (B=F907501) (C=F907501)									
2	1	1N3078-21000	PANEL, CONTROL	1	1	1					
3	1	1N3078-29010	COVER, HS. TRANSM. RBBR	1	1	1	1	1	1	1	
4	1	1N3077-11000	HANDLE COMPL.	1	1	1	1	1	1	1	
5	1	1N3077-22000	BRACKET L, EMG. STP. LV	1	1	1	1	1	1	1	
6	1	1N3077-23000	BRACKET R, EMG. STP. LV	1	1	1	1	1	1	1	
7	1	1N3077-62000	LEVER CMP, EMERG. STOP	1	1	1	1	1	1	1	
8	1	1N3077-63000	GUARD COMP., UPPER	1	1	1	1	1	1	1	
9	1	1N3077-26000	LINK L CMP, STP. LEVER	1	1	1	1	1	1	1	
10	1	1N3077-69130	LINK, STOP LEVER	1	1	1	1	1	1	1	
11	1	1N3077-25000	ROD COMP., ADJUSTING	1	1	1					
11-1	1	1N3077-25001	ROD COMP., ADJUSTING	1	1	1	1	1	1	1	S
		(A=F907501) (B=F907501) (C=F907501)									
12	1	1N3077-59060	ROD, STOP LEVER	1	1	1					
12-1	1	1N1833-39030	ROD 105, CHUTE LINK	1	1	1	1	1	1	1	S
		(A=F907501) (B=F907501) (C=F907501)									
13	1	1N1600-71560	COIL SPRING 12.5X50	1	1	1	1	1	1	1	
14	1	1N1600-75290	FOOT C-31-4, RUBBER	2	2	2	2	2	2	2	
15	1	1N1600-74610	BOLT 8X25	6	6	6	6	6	6	6	
16	1	26022-060162	SCREW, M6X16	6	6	6	6	6	6	6	
17	1	26607-100002	NUT, M10	1	1	1					
17-1	1	26607-080002	NUT, M8	1	1	1	1	1	1	1	S
		(A=F907501) (B=F907501) (C=F907501)									
18	1	22137-060000	WASHER, 6	6	6	6	6	6	6	6	
19	1	22137-080000	WASHER, 8	10	10	10	10	10	10	10	
20	1	22417-250160	PIN, COTTER 2.5X16	10	10	10	10	10	10	10	
21	1	1N3077-69140	RUBBER 12X120, CHANNL	1	1	1	1	1	1	1	
22	1	1N3077-24000	REINFORCMT, PANEL	1	1	1	1	1	1	1	
23	1	1N1600-74410	BOLT M 6X 16	4	4	4	4	4	4	4	
24	1	1N1600-75300	BUSH NG-79-K, RUBBER	2	2	2	2	2	2	2	
25	1	1N3078-23000	CONTROL PANEL COMP.				1	1	1	1	

N062668

Fig.17. CONTROL LEVER

17. CONTROL LEVER



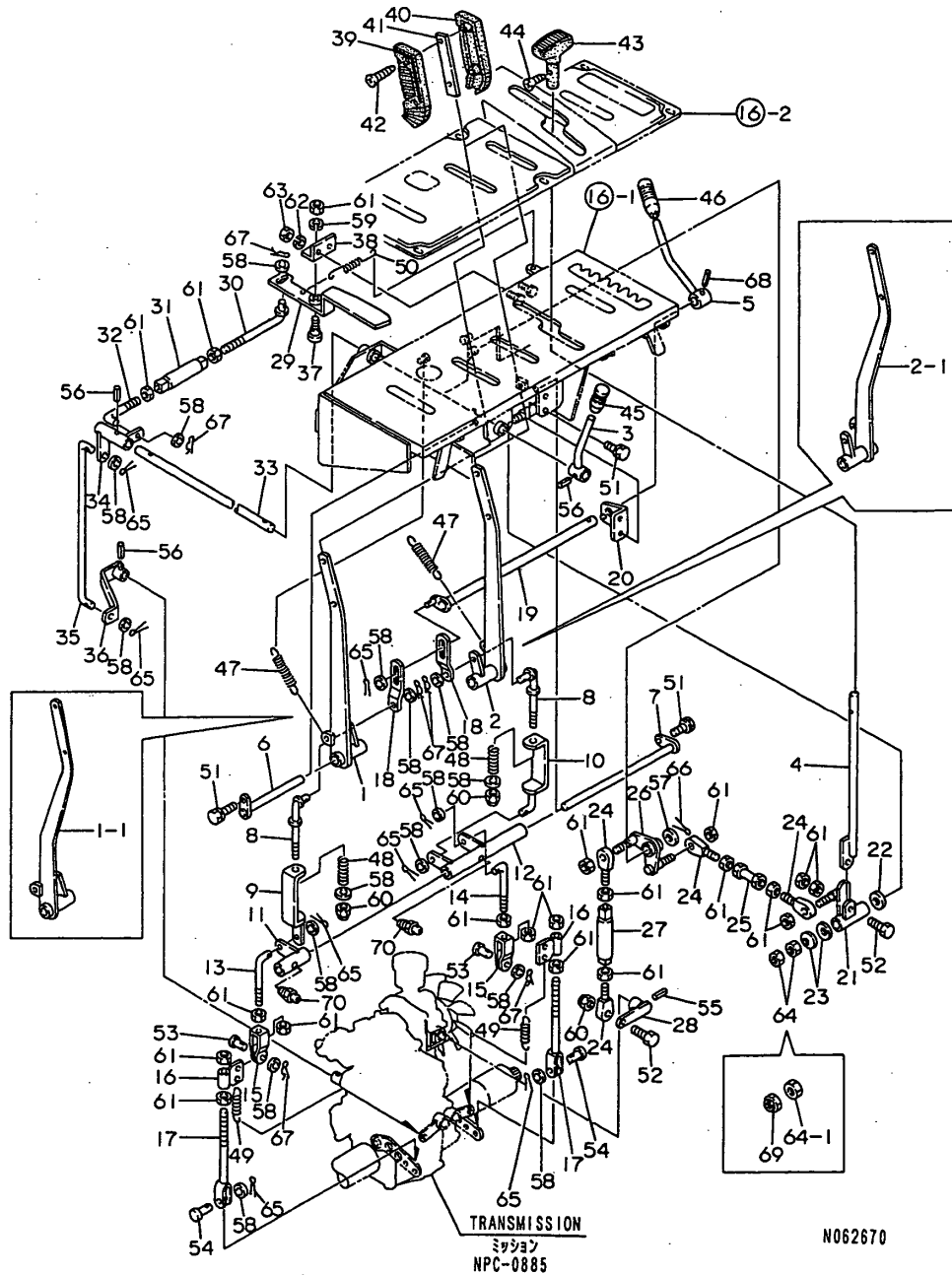
(A)=YSR1710H
(B)=YSR2110H
(C)=YSR2610H

(D)=YSR1710HE
(E)=YSR2110HE
(F)=YSR2610HE

No.	Lev.	Parts No.	Description	Q'ty						I	R
				(A)	(B)	(C)	(D)	(E)	(F)		
1	1	1N3077-31000	LEVER CMP,TRVL.CLTCH	1	1	1					
1-1	1	1N3077-31001	LEVER CMP,TRVL.CLTCH	1	1	1	1	1	1	1	S
		(A=F907501) (B=F907501) (C=F907501)									
2	1	1N3077-41000	LEVER CMP,AGR.CLTCH	1	1	1					
2-1	1	1N3077-41001	LEVER CMP,AGR.CLTCH	1	1	1	1	1	1	1	S
		(A=F907501) (B=F907501) (C=F907501)									
3	1	1N3077-42000	LEVER CMP,CHUTE CAP	1	1	1					
4	1	1N1600-70130	JOINT B	1	1	1	1	1	1	1	
5	1	1N3077-39050	BOLT M10	1	1	1	1	1	1	1	
6	1	1N3077-39040	ROD 115,TRAVEL CLTCH	1	1	1	1	1	1	1	
7	1	1N3077-45000	PIN 90 COMP.,LEVER	1	1	1	1	1	1	1	
8	1	1N3077-66000	LINK COMP.,CLUTCH	1	1	1	1	1	1	1	
9	1	1N1677-59111	LEVER,HYRAULIC CONT.	1	1	1	1	1	1	1	
10	1	1N3078-19010	BRACKET, SWITCH	2	2	2					
10-1	1	1N3078-19011	BRACKET, SWITCH	2	2	2	2	2	2	2	S
		(A=F907501) (B=F907501) (C=F907501)									
11	1	1N1600-75310	LEVER, THROTTLE	1	1	1	1	1	1	1	
12	2	26707-050002	NUT, M5	1	1	1	1	1	1	1	
13	1	1N1687-71000	WIRE,THROTTLE	1	1	1	1	1	1	1	
14	1	1N3077-71000	AUGER CLUTCH WIRE	1	1	1	1	1	1	1	
15	1	1N3077-69090	BOOT,LEVER	1	1	1	1	1	1	1	
16	1	1N3077-69020	GRIP,CONT.LEVER RED	2	2	2	2	2	2	2	
17	1	1N1600-75320	GRIP A10,LEVER	2	2	2	2	2	2	2	
18	1	1N1600-70260	SPRING,MAIN CLUTCH	1	1	1	1	1	1	1	
19	1	1N1889-19010	SPRING,TENS.CLUTCH	1	1	1	1	1	1	1	
20	1	1N1610-70140	SPRING,COILED	1	1	1					
21	1	1N1677-79030	BOLT,WIRE SET		1	1			1	1	
22	1	26557-050302	SCREW, M5X30	1	1	1	1	1	1	1	
23	1	26022-060162	SCREW, M6X16	2	2	2	2	2	2	2	
24	1	1N1600-74410	BOLT M 6X 16	1	1	1	1	1	1	1	
25	1	22137-060000	WASHER, 6	6	6	6	6	6	6	6	
26	1	22137-080000	WASHER, 8	3	3	3	3	3	3	3	
27	1	22137-100000	WASHER, 10	1	1	1					
28	1	26707-060002	NUT, M6	4	6	6	4	6	6	6	
29	1	26607-080002	NUT, M8	3	3	3	3	3	3	3	
30	1	26607-100002	NUT, M10	2	2	2					
31	1	22417-250160	PIN, COTTER 2.5X16	1	1	1	1	1	1	1	
32	1	1N1600-72230	PIN 8,SNAP	2	2	2	2	2	2	2	
33	1	22217-060000	WASHER, SPRING 6	4	4	4	4	4	4	4	
34	1	22217-100000	WASHER, SPRING 10	1	1	1	1	1	1	1	
35	1	26607-100002	NUT, M10	1	1	1	1	1	1	1	
36	1	1N1677-59120	FITTINGS,THROTTLE LV	1	1	1	1	1	1	1	
37	1	22117-080000	WASHER, 8	1	1	1	1	1	1	1	W
		(A=F907501) (B=F907501) (C=F907501)									
38	1	22272-000060	RING, E- 6	1	1	1	1	1	1	1	W
		(A=F907501) (B=F907501) (C=F907501)									

Fig.18. CONTROL LEVER

18. CONTROL LEVER



N062670

TRANSMISSION
ミツヨブ
NPC-0885

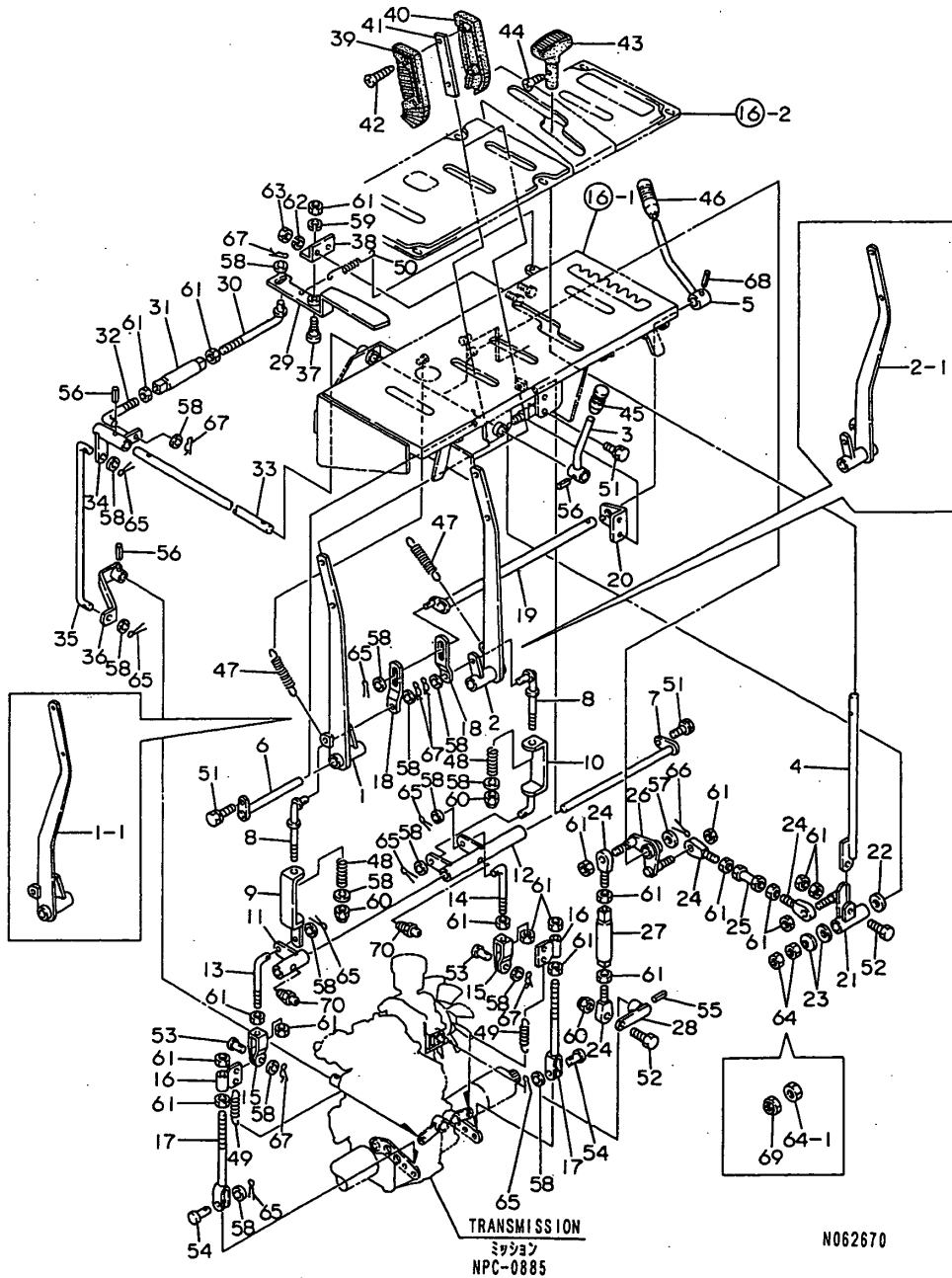
(A)=YSR1710H
(B)=YSR2110H
(C)=YSR2610H

(D)=YSR1710HE
(E)=YSR2110HE
(F)=YSR2610HE

No.	Lev.	Parts No.	Description	Qty						I	R
				(A)	(B)	(C)	(D)	(E)	(F)		
1	1	1N3077-32000	LEVER L CMP,SD.CLTCH	1	1	1					
1-1	1	1N3077-32001	LEVER L CMP,SD.CLTCH	1	1	1	1	1	1	1	S 1
		(A=F907501) (B=F907501) (C=F907501)									
2	1	1N3077-33000	LEVER R CMP,SD.CLTCH	1	1	1					
2-1	1	1N3077-33001	LEVER R CMP,SD.CLTCH	1	1	1	1	1	1	1	S 1
		(A=F907501) (B=F907501) (C=F907501)									
3	1	1N3077-55000	LEVER COMP.,SUB-CHG.	1	1	1	1	1	1	1	
4	1	1N3077-51000	LEVER CMP,HS.TRANSM.	1	1	1	1	1	1	1	
5	1	1N1867-37000	LEVER CMP,PARK.BRAKE	1	1	1	1	1	1	1	
6	1	1N3077-48000	PIN 140 COMP.,LEVER	1	1	1	1	1	1	1	
7	1	1N3077-47000	PIN 270 COMP.,LEVER	1	1	1	1	1	1	1	
8	1	1N3077-37000	LINK 34 CMP,SD.CLTCH	2	2	2	2	2	2	2	
9	1	1N3077-58000	LINK 141L,SD.CLUTCH	1	1	1	1	1	1	1	
10	1	1N3077-68000	LINK 141R,SD.CLUTCH	1	1	1	1	1	1	1	
11	1	1N3077-34000	ARM L COMP.,COUNTER	1	1	1	1	1	1	1	
12	1	1N3077-35000	ARM R COMP.,COUNTER	1	1	1	1	1	1	1	
13	1	1N3077-39070	LINK 95L,SIDE CLUTCH	1	1	1	1	1	1	1	
14	1	1N3077-39080	LINK 95R,SIDE CLUTCH	1	1	1	1	1	1	1	
15	1	1N3077-39030	JOINT A	2	2	2	2	2	2	2	
16	1	1N3077-38000	HOLDER CMP.,SD.CLTCH	2	2	2	2	2	2	2	
17	1	1N3077-36000	ROD 190 CMP,SD.CLTCH	2	2	2	2	2	2	2	
18	1	1N3077-69110	LINK, BRAKE	2	2	2	2	2	2	2	
19	1	1N3077-67000	SHAFT CMP,BRAKE LVR.	1	1	1	1	1	1	1	
20	1	1N3077-64000	BRACKET,BRAKE SHAFT	1	1	1	1	1	1	1	
21	1	1N3077-52000	BOSS,HS.TRANSM.LEVER	1	1	1	1	1	1	1	
22	1	1N3077-59040	WASHER 14X30X3,THRST	1	1	1	1	1	1	1	
23	1	1N3077-59030	WASHER 14,SPRING	2	2	2					
23-1	1	1N3077-59050	SPRING H14,BELLEVIL.	2	2	2	2	2	2	2	N
		(A=F907471) (B=F907471) (C=F907471)									
24	1	1N1600-75390	END SM1-8,ROD	4	4	4	4	4	4	4	
25	1	1N3077-65000	LINK 47,HS.TRANSMIS.	1	1	1	1	1	1	1	
26	1	1N3077-54000	CAM CMP,HS.TRANSMIS.	1	1	1	1	1	1	1	
27	1	1N3077-39100	LINK 115,HS.TRANSM.	1	1	1	1	1	1	1	
28	1	1N3077-53000	ARM,HS.TRANSM.CHANGE	1	1	1	1	1	1	1	
29	1	1N3077-46000	STOPPER,AUGER CLUTCH	1	1	1	1	1	1	1	
30	1	1N3077-44000	LINK 150,AUGER CLTCH	1	1	1	1	1	1	1	
31	1	1N3077-39090	LINK 120,AUGER CLTCH	1	1	1	1	1	1	1	
32	1	1N3077-49010	LINK 85,AUGER CLUTCH	1	1	1	1	1	1	1	
33	1	1N3077-59010	SHAFT, CHANGE LEVER	1	1	1	1	1	1	1	
34	1	1N3077-57000	CAM COMP.,SUB-CHANGE	1	1	1	1	1	1	1	
35	1	1N3077-59020	LINK 347,SUB-CHANGE	1	1	1	1	1	1	1	
36	1	1N3077-56000	ARM COMP.,SUB-CHANGE	1	1	1	1	1	1	1	
37	1	1N3077-49030	BOLT M8,STEPPED	1	1	1	1	1	1	1	
38	1	1N3077-49020	BRACKET,CLTCH.STOPPR	1	1	1	1	1	1	1	
39	1	1N3077-69030	GRIP A,CLUTCH LEVER	2	2	2	2	2	2	2	
40	1	1N3077-69040	GRIP B,CLUTCH LEVER	2	2	2	2	2	2	2	
41	1	1N3077-69050	SPACER,GRIP	2	2	2	2	2	2	2	
42	1	1N3077-69060	SCREW M4X20	4	4	4	4	4	4	4	
43	1	1N3077-69070	GRIP,POWER-SHIFT	1	1	1	1	1	1	1	
44	1	1N3077-69080	SCREW 4X12,FHMC.	1	1	1	1	1	1	1	
45	1	1N3077-69010	GRIP,CONT.LEVER BLK.	1	1	1	1	1	1	1	

Fig.18. CONTROL LEVER

18. CONTROL LEVER



N062670

TRANSMISSION
ミツビシ
NPC-0885

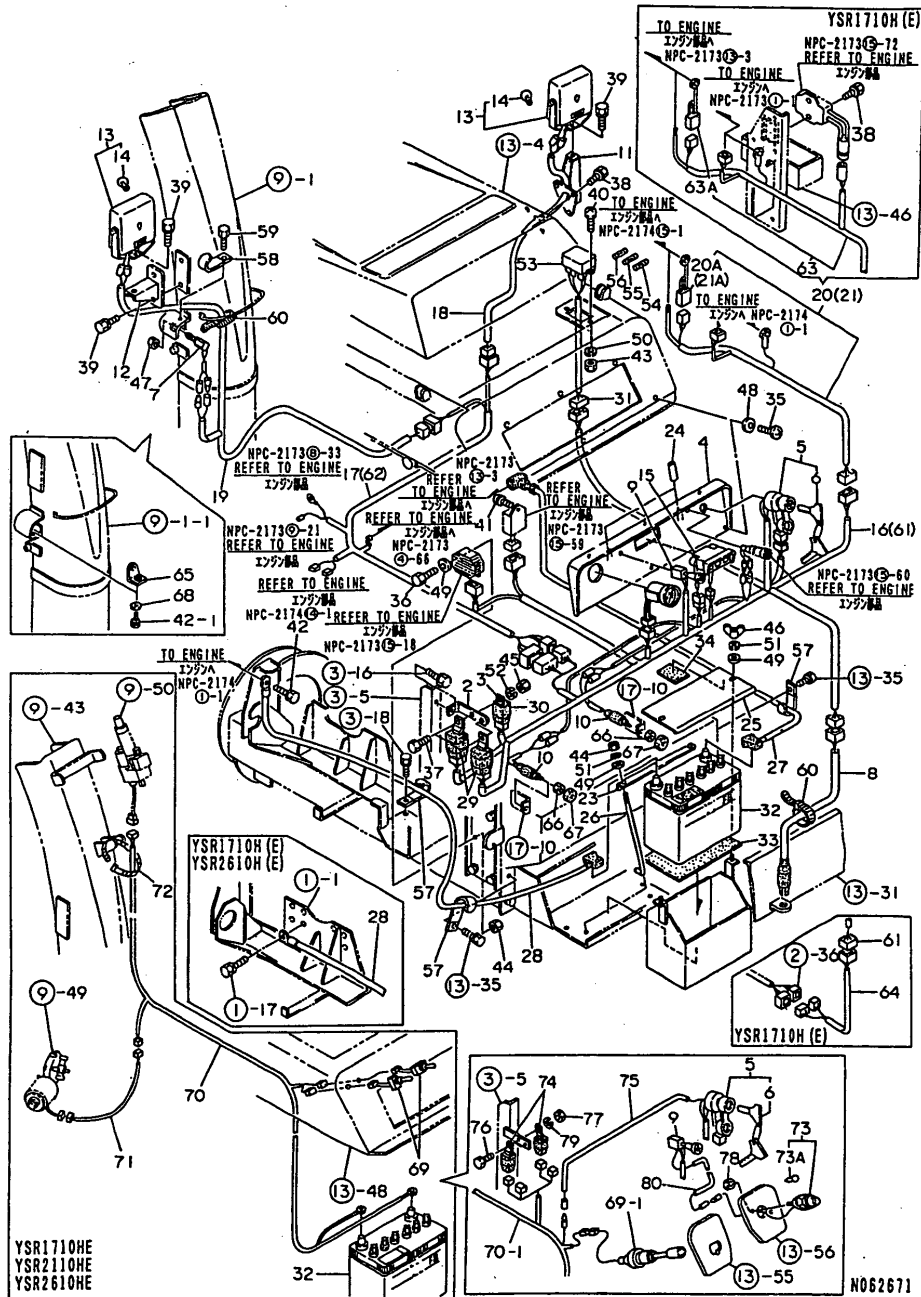
(A)=YSR1710H
(B)=YSR2110H
(C)=YSR2610H

(D)=YSR1710HE
(E)=YSR2110HE
(F)=YSR2610HE

No.	Lev.	Parts No.	Description	Q'ty						I	R
				(A)	(B)	(C)	(D)	(E)	(F)		
46	1	1N3077-69020	GRIP,CONT.LEVER RED	1	1	1	1	1	1		
47	1	1N1470-71210	SPRING 15X90	2	2	2	2	2	2		
48	1	1N3079-16010	SPRING 14X50,COILED	2	2	2					
48-1	1	1N3079-16030	SPRING 14.5X50,COIL.	2	2	2	2	2	2		N
		(A=F104371) (B=F104371) (C=F104371)									
49	1	1N3079-16020	SPRING 14X76,COILED	2	2	2	2	2	2		
49-1	1	1N1610-70160	SPRING,TEN.CLUTCH	2	2	2	2	2	2		N
		(A=F104371) (B=F104371) (C=F104371)									
50	1	1N1600-70450	SPRING,BACK	1	1	1	1	1	1		
51	1	1N1600-74410	BOLT M 6X 16	4	4	4	4	4	4		
52	1	26117-080302	BOLT M 8X 30	2	2	2	2	2	2		
53	1	1N1600-74770	PIN 8X22	2	2	2	2	2	2		
54	1	1N1600-74780	PIN 8X25,FLAT HEAD	2	2	2	2	2	2		
55	1	1N1600-75400	PIN 5X22,SPRING	1	1	1	1	1	1		
56	1	22351-060022	PIN, SPRING 6.0X22	3	3	3	3	3	3		
57	1	22137-120000	WASHER, 12	1	1	1	1	1	1		
58	1	22137-080000	WASHER, 8	15	15	15	15	15	15		
59	1	22217-080000	WASHER, SPRING 8	1	1	1	1	1	1		
60	1	1N1600-74790	U-NUT 8	3	3	3	3	3	3		
61	1	26607-080002	NUT, M8	20	20	20	20	20	20		
62	1	22217-060000	WASHER, SPRING 6	2	2	2	2	2	2		
63	1	26707-060002	NUT, M6	2	2	2	2	2	2		
64	1	1N1600-74800	NUT M14	2	2	2					
64-1	1	1N1600-74800	NUT M14	1	1	1	1	1	1		K
		(A=F003821) (B=F003821) (C=F003821)									
65	1	22417-250160	PIN, COTTER 2.5X16	8	8	8	8	8	8		
66	1	1N1600-72160	PIN 3X20,COTTER	1	1	1	1	1	1		
67	1	1N1600-72230	PIN 8,SNAP	6	6	6	6	6	6		
68	1	22351-050025	PIN, SPRING 5.0X25	1	1	1	1	1	1		
69	1	1N1600-77090	U-NUT M14	1	1	1	1	1	1		W
		(A=F003821) (B=F003821) (C=F003821)									
70	1	24761-060000	NIPPLE, GREASE MT6X1	2	2	2	2	2	2		W
		(A=F305341) (B=F305391) (C=F305441) (D=F305341) (E=F305391) (F=F305441)									

Fig.19. ELECTRICAL PARTS

19. ELECTRICAL PARTS



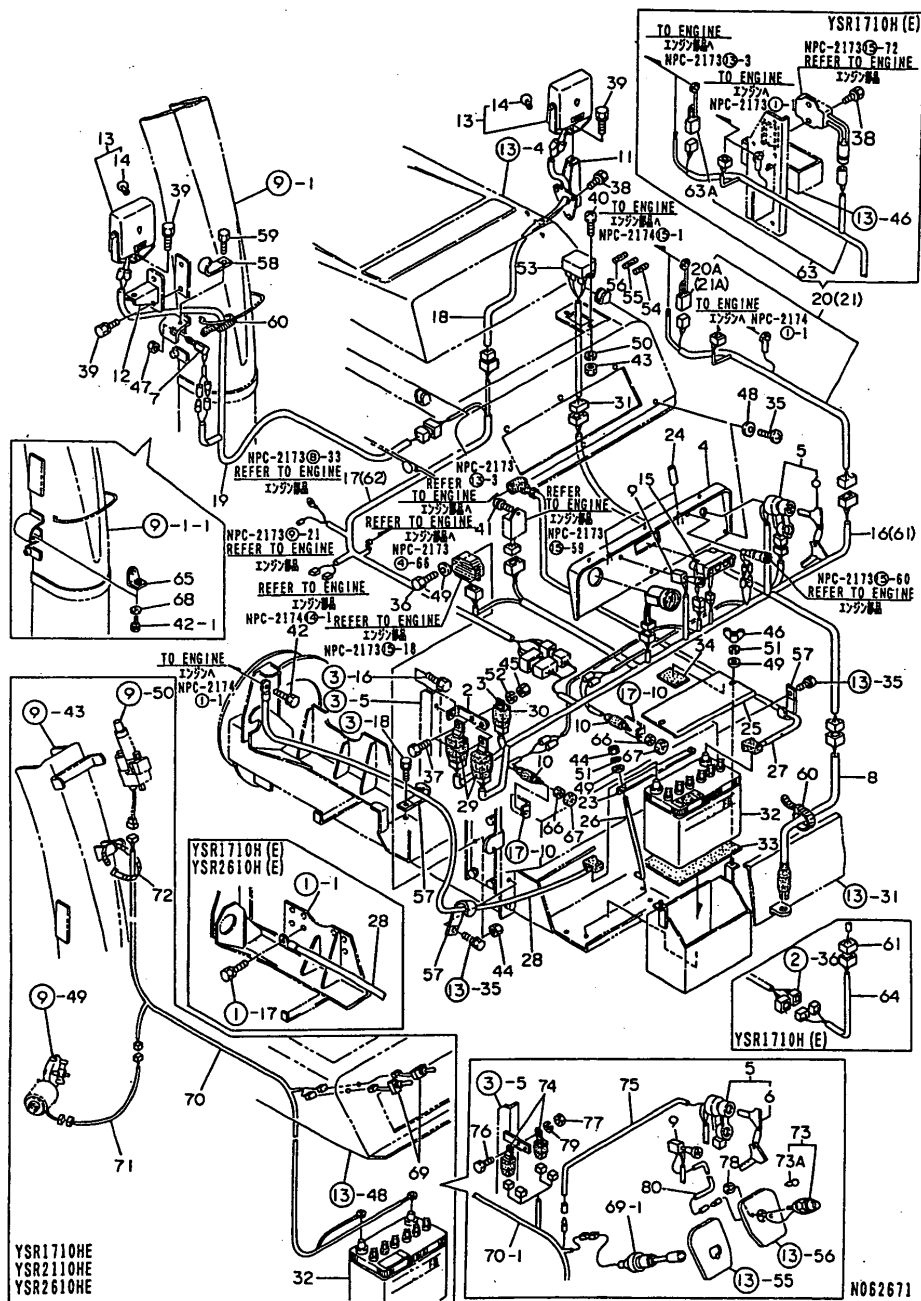
(A)=YSR1710H
(B)=YSR2110H
(C)=YSR2610H

(D)=YSR1710HE
(E)=YSR2110HE
(F)=YSR2610HE

No.	Lev.	Parts No.	Description	Q'ty						I	R
				(A)	(B)	(C)	(D)	(E)	(F)		
1	1	1N1670-85000	METER UNIT, HOUR	1	1	1					
1-1	1	1N3158-41000	METER, HOUR	1	1	1	1	1	1	1	R
		(A=F104371) (B=F104371) (C=F104371)									
2	1	1N3098-19010	BRACKET, RELAY	1	1	1	1	1	1	1	
3	1	1N1868-19020	BRACKET COMPL., WIRE	1	1	1	1	1	1	1	
4	1	1N3078-22000	PANEL, SWITCH	1	1	1	1	1	1	1	
5	1	1N1868-31000	SWITCH, MAIN	1	1	1	1	1	1	1	
6	2	123482-91291	KEY	2	2	2	2	2	2	2	
7	1	1N1808-31000	SWITCH, GUARD	1	1	1	1	1	1	1	
8	1	1N1938-31000	SWITCH, EMRGNCY. STOP	1	1	1	1	1	1	1	
9	1	1N1678-32000	SWITCH, LIGHTING	1	1	1	1	1	1	1	
10	1	1N1600-70180	SWITCH, NEUTRAL	2	2	2	2	2	2	2	
11	1	1N3078-34000	STAY COMP., LIGHT	1	1	1	1	1	1	1	
12	1	1N1678-35000	STAY, CHUTE LIGHT	1	1	1	1	1	1	1	
13	1	1N1678-36000	HEADLIGHT	2	2	2	2	2	2	2	
14	2	1N1678-36100	BULB 12V-15W	2	2	2	2	2	2	2	
15	1	1N1678-41000	LAMP, 3-L .IN ICATOR	1	1	1	1	1	1	1	
16	1	1N3078-51000	HARNESS (A), WIRE		1	1	1	1	1	1	
17	1	1N3078-52000	HARNESS (B), WIRE		1	1	1	1	1	1	
18	1	1N1868-53000	HARNESS C, WIRE	1	1	1	1	1	1	1	
19	1	1N3078-54000	HARNESS (D), WIRE	1	1	1	1	1	1	1	
20	1	1N3078-55000	HARNESS (E), WIRE		1				1		
20A	2	1N3078-56000	LINK, FUSIBLE		1				1		
21	1	1N3088-55000	HARNESS (E), WIRE			1					
21A	2	1N3078-56000	LINK, FUSIBLE			1					
22	1	1N3078-61000	BATTERY COVER ASSY	1	1	1	1	1	1	1	
22-1	1	1N3078-61000-1	BATTERY COVER ASSY						1	1	S
				(D=F305341)	(E=F305391)	(F=F305441)					
23	1	1N1868-69010	CLAMP, BATTERY	1	1	1	1	1	1	1	
24	1	1N1838-69010	COVER 70, CLAMP	2	2	2	2	2	2	2	
25	1	1N3078-69010	LID, BATTERY COVER	1	1	1	1	1	1	1	
25-1	1	1N3078-69010-1	LID, BATTERY COVER						1	1	S
				(D=F305341)	(E=F305391)	(F=F305441)					
26	1	1N1678-69020	BOLT, BATTERY SET	2	2	2	2	2	2	2	
27	1	1N1868-71001	CORD, BATTERY POS.	1	1	1	1	1	1	1	
28	1	1N1868-72001	CORD, BATTERY	1	1	1	1	1	1	1	
29	1	1N1938-74000	RELAY A	2	2	2	2	2	2	2	
30	1	1N1938-75000	RELAY B	1	1	1	1	1	1	1	
31	1	1N1838-76000	HARNESS, FUSE BOX	1	1	1	1	1	1	1	
32	1	1N1650-70060	BATTERY NX100-S6	1	1	1	1	1	1	1	
33	1	1N3078-99010	RUBBER, CUSHION	1	1	1	1	1	1	1	
34	1	1N3078-99020	RUBBER, BATTERY COVER	2	2	2	2	2	2	2	
35	1	1N1600-74150	SCREW 4.5X10, TAPPING	6	6	6	6	6	6	6	
36	1	26117-060302	BOLT M 6X 30 PLATED	2	2	2	2	2	2	2	
37	1	26117-080202	BOLT M 8X 20 PLATED	2	2	2	2	2	2	2	
38	1	1N1600-74410	BOLT M 6X 16	5	3	3	5	3	3	3	
39	1	26013-080124	BOLT M 8X 12	4	4	4	4	4	4	4	
40	1	1N1600-74810	SCREW 5X16, PAN HD. MC	2	2	2	2	2	2	2	
41	1	1N1600-74820	SCREW 6X16, PAN HD. MC	1	1	1	1	1	1	1	
42	1	1N1600-72260	BOLT 8X15 W/WASHER		1						
42-1	1	1N1600-72260	BOLT 8X15 W/WASHER	1	2	1	1	2	1	1	K

Fig.19. ELECTRICAL PARTS

19. ELECTRICAL PARTS



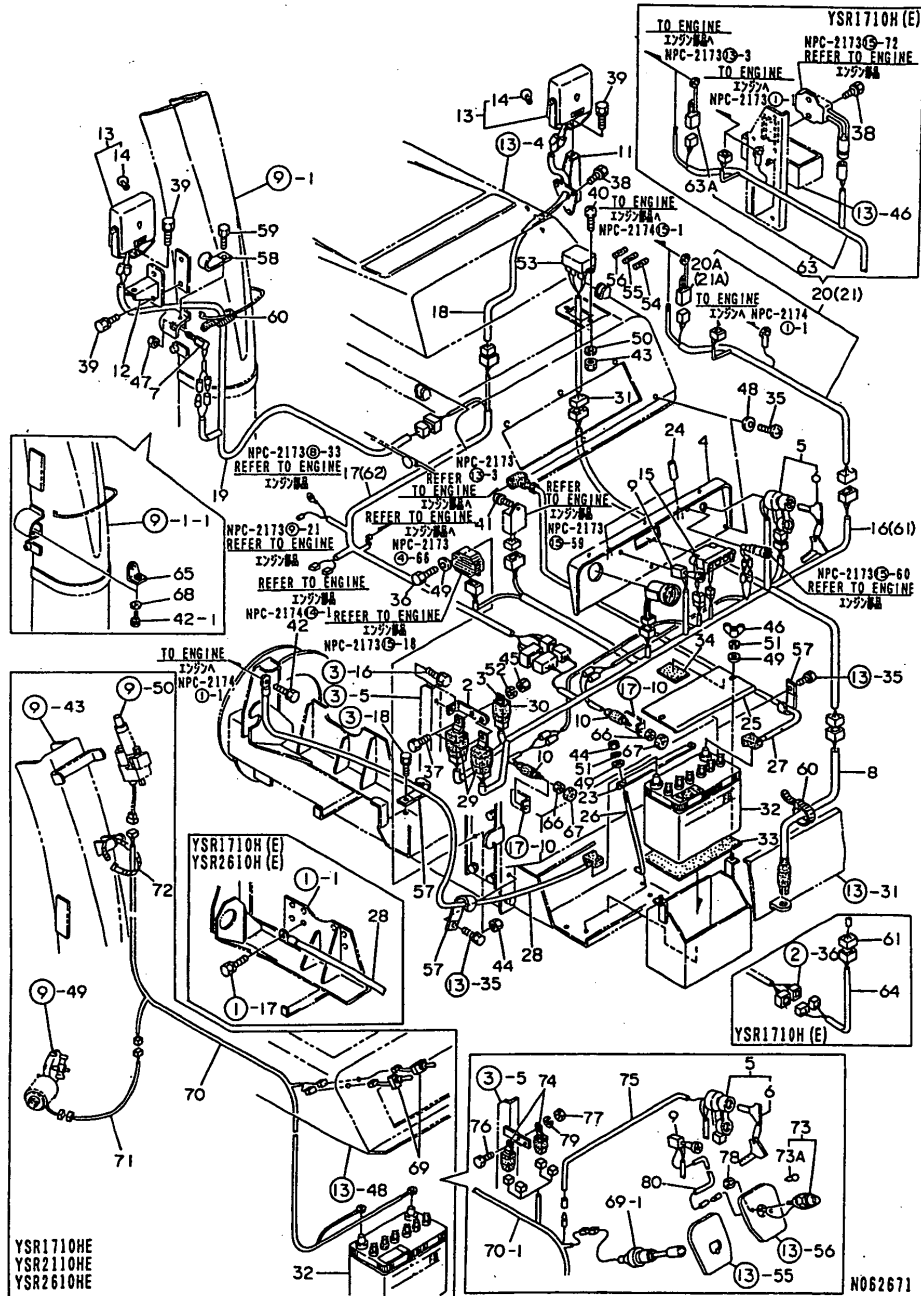
(A)=YSR1710H
 (B)=YSR2110H
 (C)=YSR2610H
 (D)=YSR1710HE
 (E)=YSR2110HE
 (F)=YSR2610HE

No.	Lev.	Parts No.	Description	Q'ty						I	R
				(A)	(B)	(C)	(D)	(E)	(F)		
			(B=F003831)								
43	1	26707-050002	NUT, M5	2	2	2	2	2	2		
44	1	26707-060002	NUT, M6	4	4	4	4	4	4		
45	1	26607-080002	NUT, M8	2	2	2	2	2	2		
46	1	1N1600-74830	WING NUT, M6	2	2	2	2	2	2		
47	1	1N1600-74840	NUT	1	1	1	1	1	1		
48	1	22137-045000	WASHER 4.5,PLAIN	6	6	6	6	6	6		
49	1	22137-060000	WASHER, 6	6	6	6	6	6	6		
50	1	22217-050000	WASHER, SPRING 5	2	2	2	2	2	2		
51	1	22217-060000	WASHER, SPRING 6	4	4	4	4	4	4		
52	1	22217-080000	WASHER, SPRING 8	2	2	2	2	2	2		
53	1	1N1838-51000	BOX,FUSE	1	1	1	1	1	1		
54	1	1N1600-75410	FUSE 5A	2	2	2	2	2	2		
55	1	1N1600-75420	FUSE 10A	2	2	2	2	2	2		
56	1	1N1600-75430	FUSE 30A,TUBE	2	2	2	2	2	2		
57	1	1N1600-75140	CLAMP 10X110,CORD	4	4	4	4	4	4		
58	1	1N1600-75450	CLAMP 6X45,CORD	1	1	1	1	1	1		
59	1	26117-060122	BOLT M 6X 12 PLATED	1	1	1	1	1	1		
60	1	1N1600-72970	BAND 170,WIRE	3	3	3	3	3	3		
61	1	1N3098-51000	HARNESS (A), WIRE	1				1			
62	1	1N3098-52000	HARNESS (B), WIRE	1				1			
63	1	1N3098-55000	HARNESS (E), WIRE	1				1			
63A	2	1N3078-56000	LINK, FUSIBLE	1				1			
64	1	1N1838-73000	PULLEY,ENGINE	1				1			
65	1	1N3078-11000	BRACKET CMP,CHUTE SW	1	1	1	1	1	1	1	W
		(A=F003831) (B=F003831) (C=F003831)									
66	1	1N3068-39010	NUT	2	2	2	2	2	2	2	W
		(A=F907501) (B=F907501) (C=F907501)									
67	1	1N3068-39020	CAP,RUBBER	2	2	2	2	2	2	2	W
		(A=F907501) (B=F907501) (C=F907501)									
68	1	22137-080000	WASHER, 8	1	1	1	1	1	1	1	W
		(A=F003831) (B=F003831) (C=F003831)									
69	1	1N3078-43000	SWITCH,NOR.-REVERSE					2	2	2	
69-1	1	1N1688-31001	SWITCH,LEVER					1	1	1	S
		(D=F201553) (E=F201559) (F=F201563)									
70	1	1N3078-71000	HARNESS,CHUTE MOTOR					1	1	1	
70-1	1	1N3078-71002	HARNESS,CHUTE MOTOR					1	1	1	S
		(D=F201553) (E=F201559) (F=F201563)									
71	1	1N3078-72000	HARNESS,SWIVEL.MOTOR					1	1	1	
72	1	1N1600-77210	TIE RF140,REPEAT					1	1	1	
73	1	1N3158-31000	LIGHT,PANEL					1	1	1	W
		(D=F201553) (E=F201559) (F=F201563)									
73A	2	1N3158-31200	BULB 12V10W					1	1	1	W
		(D=F201553) (E=F201559) (F=F201563)									
74	1	1N1938-74000	RELAY A					4	4	4	W
		(D=F201553) (E=F201559) (F=F201563)									
75	1	1N3078-75000	CORD,CHUTE POWER					1	1	1	W
		(D=F305341) (E=F305391) (F=F305441)									
76	1	26117-080202	BOLT M 8X 20 PLATED					2	2	2	W
		(D=F201553) (E=F201559) (F=F201563)									
77	1	26707-080002	NUT, M8					2	2	2	W

N:Old $\frac{Yes}{No}$ New, Q:Old $\frac{No}{Yes}$ New, R:Old $\frac{Yes}{No}$ New, S:Old $\frac{No}{Yes}$ New, W:Add, Z:Discontinued, F:Interchangeable by set, K:Q'ty Change
 ++ CONTINUE ++
 Copyright (C) YANMAR CO., LTD. All Rights Reserved.

Fig.19. ELECTRICAL PARTS

19. ELECTRICAL PARTS



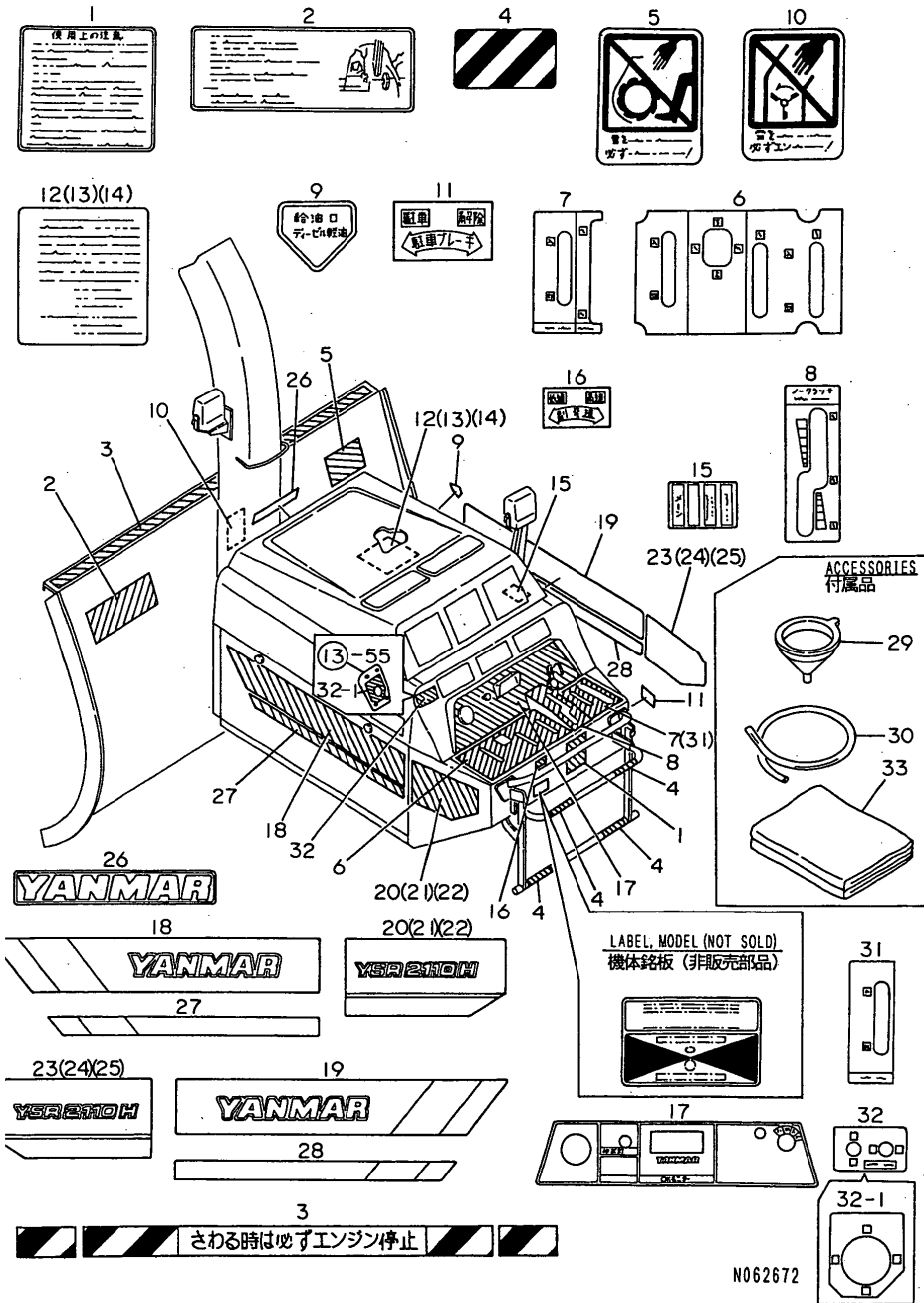
No.	Lev.	Parts No.	Description	Q'ty						I	R	
				(A)	(B)	(C)	(D)	(E)	(F)			
78	1	26707-040020	NUT M4	(D)=F201553	(E)=F201559		(F)=F201563					
							2	2	2	W		
79	1	22217-080000	WASHER, SPRING 8	(D)=F201553	(E)=F201559		(F)=F201563					
							2	2	2	W		
80	1	1N3078-73000	CORD A,PANEL LIGHT	(D)=F201553	(E)=F201559		(F)=F201563					
							1	1	1	W		

Fig.20. LABELS & ACCESSORIES

(A)=YSR1710H
(B)=YSR2110H
(C)=YSR2610H

(D)=YSR1710HE
(E)=YSR2110HE
(F)=YSR2610HE

20. LABELS & ACCESSORIES



No.	Lev.	Parts No.	Description	Qty						I	R
				(A)	(B)	(C)	(D)	(E)	(F)		
1	1	1N1867-99010	MARK,SMALL CAUTION	1	1	1	1	1	1		
2	1	1N1867-99020	MARK,SAFE.BOLT REPLC	1	1	1	1	1	1		
3	1	1N1837-99030	MARK,SNOW REM.CAUTN	2	2	2	2	2	2		
4	1	1N1937-99070	MARK,BLK.& YEL.STRP.	4	4	4	4	4	4		
5	1	1N1937-99120	MARK,AUGER SAFETY	1	1	1	1	1	1		
6	1	1N3077-99020	MARK L,PANEL	1	1	1	1	1	1		
7	1	1N3077-99030	MARK R,PANEL	1	1	1					
8	1	1N3077-99040	MARK,STEPLESS SHIFT	1	1	1	1	1	1		
9	1	1N1689-18040	MARK,OIL SUPPLY	1	1	1	1	1	1		
10	1	1N1869-18060	MARK,SAFETY	1	1	1	1	1	1		
11	1	1N1869-18090	MARK,PARKING BRAKE	1	1	1	1	1	1		
12	1	1N3077-99120	MARK,MAINTENANCE		1			1			
13	1	1N3087-99120	MARK,MAINTENANCE			1				1	
14	1	1N3097-99120	MARK,MAINTENANCE	1			1				
15	1	1N1836-59010	LABEL, FUSE BOX	1	1	1	1	1	1		
16	1	1N3077-99110	MARK,SUB-CHANGE	1	1	1	1	1	1		
17	1	1N3077-99010	LABEL	1	1	1	1	1	1		
18	1	1N3077-99050	MARK L YANMAR,SIDE	1	1	1	1	1	1		
19	1	1N3077-99060	MARK L YANMAR,SIDE	1	1	1	1	1	1		
20	1	1N3077-99070	MARK L,MODEL		1			1			
21	1	1N3087-79070	MARK L,MODEL			1				1	
22	1	1N3097-79070	MARK L,MODEL	1			1				
23	1	1N3077-99080	MARK R,MODEL		1			1			
24	1	1N3087-79080	MARK R,MODEL			1				1	
25	1	1N3097-79080	MARK R,MODEL	1			1				
26	1	1N1679-18260	MARK B Y	1	1	1	1	1	1		
27	1	1N3077-99090	STRIP L	1	1	1	1	1	1		
28	1	1N3077-99100	STRIP R	1	1	1	1	1	1		
29	1	1N3070-99010	FUNNEL	1	1	1	1	1	1		
30	1	1N3070-99020	PIPE, VINYL	1	1	1	1	1	1		
31	1	1N3077-99140	MARK R,PANEL				1	1	1		
32	1	1N3077-99130	MARK,CHUTE SWITCH				1	1	1		
32-1	1	1N3077-99340	MARK,CHUTE SWITCH				1	1	1		S
33	1	1N1677-84001	COVER,OPERATOR SEAT	(D=F201553)	(E=F201559)		(F=F201563)				

Parts No. Index

Parts No.	Fig. No.	Ref. No.
123482-91291	19	6
1N1470-71210	18	47
1N1600-70040	7	13
1N1600-70130	17	4
1N1600-70150	9	15
1N1600-70180	19	10
1N1600-70210	13	28
1N1600-70260	15	25
	17	18
1N1600-70310	15	47
1N1600-70390	13	18
1N1600-70450	18	50
1N1600-70600	1	9
	3	10
	5	9
1N1600-71420	9	2
1N1600-71520	15	5
1N1600-71560	16	13
1N1600-71570	9	24
1N1600-71590	9	42
1N1600-71670	9	40
1N1600-71960	10	45
1N1600-72000	10	46
	11	20
1N1600-72040	10	47
1N1600-72080	12	21
1N1600-72130	10	48
1N1600-72160	9	32
	18	66
1N1600-72220	9	39
1N1600-72230	17	32
	18	67
1N1600-72250	9	22
1N1600-72260	19	42
		42 -1
1N1600-72440	10	40
1N1600-72540	14	13
1N1600-72960	11	10
1N1600-72970	2	39
	6	28
	19	60
1N1600-73090	10	29
1N1600-73590	10	28
1N1600-74080	7	15
1N1600-74140	13	23
1N1600-74150	19	35
1N1600-74340	14	34
1N1600-74380	14	29
1N1600-74400	1	14
	3	15

Parts No.	Fig. No.	Ref. No.
1N1600-74400	5	15
1N1600-74410	1	15
	2	23
	9	35
	13	34
		37
		37 -1
	16	23
	17	24
	18	51
	19	38
1N1600-74420	1	17
	5	18
		18 -1
1N1600-74430	1	19
	3	17
1N1600-74440	2	18
	4	16
	6	15
1N1600-74450	2	19
	4	17
	6	16
1N1600-74460	2	20
1N1600-74470	2	21
1N1600-74480	2	24
		24 -1
	4	19
	6	18
	8	15
	9	26
		27
		65
	13	32
1N1600-74490	2	26
1N1600-74500	2	34
1N1600-74510	3	14
	5	14
1N1600-74520	4	21
	6	20
	15	29
1N1600-74530	5	19
1N1600-74540	7	14
1N1600-74550	7	16
1N1600-74560	7	24
1N1600-74570	7	26
1N1600-74580	7	27
1N1600-74590	7	35
1N1600-74600	7	36
1N1600-74610	8	17
	10	36

Parts No.	Fig. No.	Ref. No.
1N1600-74610	16	15
1N1600-74620	8	19
1N1600-74640	10	35
1N1600-74650	11	9
1N1600-74660	14	30
1N1600-74670	14	31
1N1600-74680	14	39
1N1600-74690	14	42
1N1600-74700	14	43
1N1600-74710	14	47
1N1600-74720	15	19
1N1600-74730	15	20
1N1600-74740	15	26
1N1600-74750	15	48
1N1600-74760	15	55
1N1600-74770	18	53
1N1600-74780	18	54
1N1600-74790	18	60
1N1600-74800	18	64
		64 -1
1N1600-74810	9	54
	19	40
1N1600-74820	19	41
1N1600-74830	19	46
1N1600-74840	19	47
1N1600-75020	14	32
1N1600-75060	14	27
1N1600-75100	2	35
1N1600-75110	2	37
	4	28
	6	26
1N1600-75120	2	38
	6	27
	13	24
1N1600-75130	2	16
	4	15
	6	14
1N1600-75140	4	29
	19	57
1N1600-75150	7	32
	8	23
	9	33
1N1600-75160	2	42
1N1600-75170	10	2
1N1600-75180	11	11
1N1600-75190	12	9
1N1600-75200	12	10
1N1600-75210	13	9
1N1600-75220	13	11
1N1600-75230	13	13

Parts No.	Fig. No.	Ref. No.
1N1600-75230-1	13	13 -1
1N1600-75240	13	21
1N1600-75250	13	22
1N1600-75260	14	28
1N1600-75270	15	18
1N1600-75280	15	27
		27 -1
1N1600-75290	16	14
1N1600-75300	16	24
1N1600-75310	17	11
1N1600-75320	17	17
1N1600-75330	15	41
1N1600-75340	14	33
1N1600-75350	14	35
1N1600-75360	14	36
1N1600-75370	14	37
1N1600-75380	14	38
1N1600-75390	18	24
1N1600-75400	18	55
1N1600-75410	19	54
1N1600-75420	19	55
1N1600-75430	19	56
1N1600-75450	8	28
	19	58
1N1600-75810	12	3 -1
1N1600-75820	12	4 -1
1N1600-77090	18	69
1N1600-77100	5	28
1N1600-77140	9	46
1N1600-77150	9	49
1N1600-77160	9	59
1N1600-77170	9	60
1N1600-77180	9	61
1N1600-77190	9	63
1N1600-77200	9	64
1N1600-77210	19	72
1N1600-77260	15	63
1N1609-11040	13	20
1N1610-70010	7	11
1N1610-70020	10	4
1N1610-70030	10	5
1N1610-70040	10	7
1N1610-70050	10	10
1N1610-70060	10	12
1N1610-70070	10	9
1N1610-70080	10	18
1N1610-70090	10	19
1N1610-70100	10	20
1N1610-70110	10	21
1N1610-70120	10	22

Parts No. Index

Parts No.	Fig. No.	Ref. No.
1N1610-70130	9	19
1N1610-70131	9	19 -1
1N1610-70140	17	20
1N1610-70160	18	49 -1
1N1619-16010	15	60
1N1625-19010	14	8
1N1625-19020	14	9
1N1630-29041	2	3
1N1630-81000	8	5
1N1632-19010	7	6
1N1632-19020	7	7
1N1632-69020	7	12
1N1633-19041	10	6
1N1633-19060	10	8
1N1633-19110	10	14
1N1633-19120	10	16
1N1633-19130	10	17
1N1633-29070	10	23
1N1633-29080	10	24
1N1633-29090	10	25
1N1633-49020	10	26
1N1633-57001	12	6
1N1633-59021	12	7
1N1633-59030	12	8
1N1633-62001	11	6
1N1635-19010	14	5
1N1636-59010	15	14
		14 -1
1N1636-69020	15	17
1N1639-12170	8	12
1N1639-19020	7	20
1N1639-19040	7	21
1N1639-19060	15	24
1N1639-19260	12	11
1N1650-70010	8	4
1N1650-70041	12	3
1N1650-70051	12	4
1N1650-70060	19	32
1N1670-34000	4	9
	6	8
1N1670-85000	19	1
1N1672-14000	7	4
1N1672-39010	7	8
1N1672-61000	7	9
1N1673-16000	10	1
1N1673-19010	8	3
1N1673-19080	10	11
1N1673-19090	10	13
1N1673-19110	10	15
1N1673-21000	8	6

Parts No.	Fig. No.	Ref. No.
1N1673-22000	8	7
1N1673-29010	8	8
1N1673-29020	8	9
1N1673-39010	9	8
1N1673-39020	9	10
1N1673-39030	9	12
1N1673-49030	10	27
1N1673-51001	12	1
1N1673-52001	12	2
1N1673-61000	11	5
1N1674-88001	13	14
1N1675-00040	14	1
1N1675-00050	14	2
1N1675-19010	14	6
1N1675-19020	14	10
1N1677-59111	17	9
1N1677-59120	17	36
1N1677-79030	17	21
1N1677-84001	20	33
1N1678-32000	19	9
1N1678-35000	19	12
1N1678-36000	19	13
1N1678-36100	19	14
1N1678-41000	19	15
1N1678-69020	19	26
1N1679-13030	7	17
1N1679-16010	7	18
1N1679-16020	7	19
1N1679-17041	15	23
1N1679-17070	9	23
1N1679-18260	20	26
1N1679-19010	15	25 -1
1N1679-19110	10	32
1N1683-19010	9	14
1N1687-71000	17	13
1N1688-31001	19	69 -1
1N1689-17030	13	25
1N1689-17040	13	26
1N1689-17050	13	27
1N1689-18040	20	9
1N1689-19010	10	30
1N1689-19020	10	31
1N1763-39010	9	9
1N1803-99010	8	10
1N1803-99020	8	11
1N1808-31000	19	7
1N1830-26000	2	2
1N1833-31000	9	1
1N1833-32000	9	3
1N1833-33000	9	4

Parts No.	Fig. No.	Ref. No.
1N1833-34000	9	5
1N1833-35000	9	6
1N1833-36000	9	7
1N1833-39020	9	11
1N1833-39030	9	13
	16	12 -1
1N1836-59010	20	15
1N1837-99030	20	3
1N1838-41000	2	36
1N1838-51000	19	53
1N1838-69010	13	19
	19	24
1N1838-73000	19	64
1N1838-76000	19	31
1N1840-23000	2	1
1N1860-23000	4	1
1N1860-24000	4	2
	6	2
1N1860-25000	4	3
	6	3
1N1860-29010	4	4
	6	4
1N1860-29020	4	5
	6	5
1N1860-29060	15	1
1N1860-32000	4	8
	6	7
1N1863-19010	10	3
1N1863-55000	12	5
1N1864-84001	13	12
1N1864-84001-1	13	12 -1
1N1864-89010	13	15
1N1864-89010-1	13	15 -1
1N1866-39040	11	21
1N1867-37000	18	5
1N1867-59010	9	16
1N1867-73000	9	21
1N1867-99010	20	1
1N1867-99020	20	2
1N1868-19020	19	3
1N1868-31000	19	5
1N1868-53000	19	18
1N1868-69010	19	23
1N1868-71001	19	27
1N1868-72001	19	28
1N1869-18060	20	10
1N1869-18090	20	11
1N1870-23000	6	1
1N1870-29030	15	50
1N1886-71000	14	18

Parts No.	Fig. No.	Ref. No.
1N1886-72000	14	19
1N1886-77000	14	11
1N1886-79020	14	20
1N1886-79030	14	21
1N1886-79040	14	22
1N1886-79050	14	23
1N1886-79060	14	24
1N1886-79080	14	25
1N1886-79090	14	26
1N1889-19010	17	19
1N1937-99070	20	4
1N1937-99120	20	5
1N1938-31000	19	8
1N1938-74000	19	29
		74
1N1938-75000	19	30
1N3068-39010	19	66
1N3068-39020	19	67
1N3070-21000	3	1
1N3070-21001	3	1 -1
1N3070-22000	3	2
1N3070-23000	3	3
1N3070-24000	3	4
1N3070-25000	3	5
1N3070-26000	3	6
1N3070-27000	3	7
1N3070-28000	3	8
1N3070-29010	3	9
1N3070-29020	1	10
	3	11
	5	10
1N3070-29030	4	6
1N3070-29040	1	12
	3	12
	5	11
1N3070-31000	4	7
1N3070-32000	1	13
	3	13
	5	12
1N3070-33000	3	23
	5	25
1N3070-39010	4	10
	6	9
1N3070-39020	4	11
1N3070-39060	4	12
	6	11
1N3070-39070	2	13
	4	13
	6	12
1N3070-39080	2	14

Parts No. Index

Parts No.	Fig. No.	Ref. No.
1N3070-39080	4	14
1N3070-99010	20	29
1N3070-99020	20	30
1N3072-11000	7	1
1N3072-12000	7	2
1N3072-13000	7	3
1N3072-15000	7	5
1N3072-69010	7	10
1N3073-11000	8	1
1N3073-13000	8	24
1N3073-19010	8	2
1N3073-31001	9	1 -1
1N3073-32000	9	3 -1
1N3073-33001	9	43
1N3073-34000	9	44
1N3073-35000	9	6 -1
1N3073-36000	9	45
1N3073-49010	11	1
1N3073-49040	11	4
1N3073-61000	11	5 -1
1N3073-62000	11	6 -1
1N3073-69010	11	7
1N3073-81000	8	25
1N3074-11000	7	33
1N3074-12000	13	1
1N3074-13000	13	2
1N3074-14000	13	3
1N3074-19030	7	34
1N3074-81000	13	4
1N3074-81001	13	4 -1
1N3074-82000	13	7
1N3074-82001	13	7 -1
1N3074-82002	13	7 -2
		48 -1
1N3074-83000	13	16 -1
1N3074-83000-1	13	16 -2
1N3074-84000	13	11 -1
1N3074-88000	13	48
1N3074-89010	13	14 -1
1N3074-89020	13	16
1N3074-89030	13	17
1N3074-89050	13	51
1N3074-89060	13	52
1N3074-89070	13	55
1N3074-89080	13	56
1N3074-89090	13	53
1N3075-00010	14	3
1N3075-12000	14	4
1N3075-19010	14	7
1N3075-73000	14	12

Parts No.	Fig. No.	Ref. No.
1N3075-75000	14	14
1N3075-76000	14	15
1N3075-99010	14	16
1N3075-99020	14	17
1N3076-39010	15	2
1N3076-39020	15	3
1N3076-39030	15	4
1N3076-49010	15	6
1N3076-49020	15	7
1N3076-49021	15	7 -1
1N3076-51000	15	8
1N3076-51001	15	8 -1
1N3076-52000	15	9
1N3076-53000	15	10
1N3076-53001	15	10 -1
1N3076-54000	15	11
1N3076-54001	15	11 -1
1N3076-55000	15	12
1N3076-56000	15	13
1N3076-57000	15	58
1N3076-58000	15	59
1N3076-61000	15	15
1N3076-61001	15	15 -1
1N3076-64000	15	16
1N3076-64001	15	16 -1
1N3077-11000	16	4
1N3077-21000	16	1
1N3077-21001	16	1 -1
1N3077-22000	16	5
1N3077-23000	16	6
1N3077-24000	16	22
1N3077-25000	16	11
1N3077-25001	16	11 -1
1N3077-26000	16	9
1N3077-31000	17	1
1N3077-31001	17	1 -1
1N3077-32000	18	1
1N3077-32001	18	1 -1
1N3077-33000	18	2
1N3077-33001	18	2 -1
1N3077-34000	18	11
1N3077-35000	18	12
1N3077-36000	18	17
1N3077-37000	18	8
1N3077-38000	18	16
1N3077-39030	18	15
1N3077-39040	17	6
1N3077-39050	17	5
1N3077-39070	18	13
1N3077-39080	18	14

Parts No.	Fig. No.	Ref. No.
1N3077-39090	18	31
1N3077-39100	18	27
1N3077-41000	17	2
1N3077-41001	17	2 -1
1N3077-42000	17	3
1N3077-44000	18	30
1N3077-45000	17	7
1N3077-46000	18	29
1N3077-47000	18	7
1N3077-48000	18	6
1N3077-49010	18	32
1N3077-49020	18	38
1N3077-49030	18	37
1N3077-51000	18	4
1N3077-52000	18	21
1N3077-53000	18	28
1N3077-54000	18	26
1N3077-55000	18	3
1N3077-56000	18	36
1N3077-57000	18	34
1N3077-58000	18	9
1N3077-59010	18	33
1N3077-59020	18	35
1N3077-59030	18	23
1N3077-59040	18	22
1N3077-59050	18	23 -1
1N3077-59060	16	12
1N3077-59090	9	48
1N3077-59100	9	16 -1
1N3077-62000	16	7
1N3077-63000	16	8
1N3077-64000	18	20
1N3077-65000	18	25
1N3077-66000	17	8
1N3077-67000	18	19
1N3077-68000	18	10
1N3077-69010	18	45
1N3077-69020	17	16
	18	46
1N3077-69030	18	39
1N3077-69040	18	40
1N3077-69050	18	41
1N3077-69060	18	42
1N3077-69070	18	43
1N3077-69080	18	44
1N3077-69090	17	15
1N3077-69110	18	18
1N3077-69130	16	10
1N3077-69140	16	21
1N3077-69150	9	67

Parts No.	Fig. No.	Ref. No.
1N3077-71000	17	14
1N3077-81000	13	29
1N3077-82000	13	30
1N3077-82000-1	13	30 -1
1N3077-83000	13	31
1N3077-84000	13	49
1N3077-84000-1	13	49 -1
1N3077-85000	13	50
1N3077-85000-1	13	50 -1
1N3077-99010	20	17
1N3077-99020	20	6
1N3077-99030	20	7
1N3077-99040	20	8
1N3077-99050	20	18
1N3077-99060	20	19
1N3077-99070	20	20
1N3077-99080	20	23
1N3077-99090	20	27
1N3077-99100	20	28
1N3077-99110	20	16
1N3077-99120	20	12
1N3077-99130	20	32
1N3077-99140	20	31
1N3077-99340	20	32 -1
1N3078-11000	19	65
1N3078-19010	17	10
1N3078-19011	17	10 -1
1N3078-21000	16	2
1N3078-22000	19	4
1N3078-23000	16	25
1N3078-29010	16	3
1N3078-34000	19	11
1N3078-42000	9	50
1N3078-43000	19	69
1N3078-49010	9	51
1N3078-49020	9	52
1N3078-51000	19	16
1N3078-52000	19	17
1N3078-54000	19	19
1N3078-55000	19	20
1N3078-56000	19	20 A
		21 A
		63 A
1N3078-61000	19	22
1N3078-61000-1	19	22 -1
1N3078-69010	19	25
1N3078-69010-1	19	25 -1
1N3078-69020	13	54
1N3078-71000	19	70
1N3078-71002	19	70 -1

Parts No. Index

Parts No.	Fig. No.	Ref. No.
1N3078-72000	19	71
1N3078-73000	19	80
1N3078-75000	19	75
1N3078-99010	19	33
1N3078-99020	19	34
1N3079-16010	18	48
1N3079-16020	18	49
1N3079-16030	18	48 -1
1N3080-21000	5	1
1N3080-22000	5	2
1N3080-23000	5	3
1N3080-23001	5	3 -1
1N3080-24000	5	4
1N3080-26000	5	5
1N3080-27000	5	6
1N3080-27001	5	6 -1
1N3080-28000	5	7
1N3080-29020	5	8
1N3080-31000	6	6
1N3080-33000	5	13
1N3080-35000	5	27
1N3080-39020	2	8 -1
	6	10
1N3080-39080	4	14 -1
	6	13
1N3083-49010	11	2
1N3084-81000	13	5
1N3084-81001	13	5 -1
1N3084-82000	13	10
1N3086-39010	15	51
1N3086-49010	15	52
1N3086-51000	15	65
1N3086-52000	15	64
1N3086-53000	15	66
1N3086-55000	15	53
1N3086-64000	15	54
1N3086-64001	15	54 -1
1N3087-59010	9	17
1N3087-59020	9	18
1N3087-59030	9	20
1N3087-79070	20	21
1N3087-79080	20	24
1N3087-99120	20	13
1N3088-55000	19	21
1N3089-16010	15	46
1N3090-21000	1	1
1N3090-21001	1	1 -1
1N3090-22000	1	2
1N3090-23000	1	3
1N3090-23001	1	3 -1

Parts No.	Fig. No.	Ref. No.
1N3090-24000	1	4
1N3090-25000	1	5
1N3090-26000	1	6
1N3090-27000	1	7
1N3090-28000	1	8
1N3090-29010	15	49
1N3090-29020	1	11
1N3090-31000	2	4
1N3090-33000	2	6
1N3090-34000	2	5
1N3090-35000	2	7
1N3090-39010	2	8
1N3090-39020	2	9
1N3090-39030	2	10
		11 -1
1N3090-39040	2	11
1N3090-39050	2	12
1N3090-39070	2	40
1N3090-39080	2	41
1N3090-39090	2	15
1N3090-39120	2	14 -1
1N3093-49010	11	3
1N3093-69010	11	8
1N3094-14000	13	46
1N3094-81000	13	6
1N3094-81001	13	6 -1
1N3094-82000	13	8
1N3094-82001	13	8 -1
1N3094-82002	13	8 -2
		47 -1
1N3094-83000	13	47
1N3097-79070	20	22
1N3097-79080	20	25
1N3097-99120	20	14
1N3098-19010	19	2
1N3098-51000	19	61
1N3098-52000	19	62
1N3098-55000	19	63
1N3106-59010	15	57
1N3154-89040	13	20 -1
1N3156-59030	15	56
1N3157-59010	9	47
1N3157-59011	9	47 -1
1N3158-31000	19	73
1N3158-31200	19	73 A
1N3158-41000	19	1 -1
22117-080000	17	37
22137-045000	19	48
22137-060000	1	21
	3	20

Parts No.	Fig. No.	Ref. No.
22137-060000	5	21
	8	27
	9	37
		56
	13	40
		40 -1
		40 -2
	16	18
	17	25
	19	49
22137-080000	1	22
	2	29
	3	24
	4	25
	5	22
	6	23
	8	21
	9	29
		66
	13	41
	14	44
	15	21
		21 -1
	16	19
	17	26
	18	58
	19	68
22137-100000	2	30
	7	28
	9	34
	15	35
	17	27
22137-120000	18	57
22137-200000	14	45
22217-050000	9	57
	19	50
22217-060000	3	21
	5	23
	9	58
	12	17
	13	42
	17	33
	18	62
	19	51
22217-080000	1	23
	2	31
	3	22
	4	26
	5	24
	6	24

Parts No.	Fig. No.	Ref. No.
22217-080000	8	22
	9	30
	11	17
	13	43
	15	22
	18	59
	19	52
		79
22217-100000	2	32
	4	27
	6	25
	7	38
	9	38
	10	39
	12	18
	15	33
	17	34
22217-120000	7	29
22242-000150	15	37
		37 -1
22242-000170	15	38
22242-000200	15	39
		68
22242-003500	15	40
22252-000450	10	41
22252-000720	11	18
22272-000060	13	45 -1
	17	38
22351-010045	12	20
22351-030025	9	41
22351-045025	9	41 -1
22351-050025	18	68
22351-060022	15	36
	18	56
22351-060045	12	19
22417-160100	9	68
22417-200160	2	33
	9	62
	13	44
		44 -1
22417-250160	9	31
	13	45
	16	20
	17	31
	18	65
22417-400320	9	53
	14	46
22550-050220	15	44
22550-060250	15	45
24101-060054	10	42

Parts No. Index

Parts No.	Fig. No.	Ref. No.
24101-062050	10	43
24101-062070	10	44
24104-060034	15	43
24104-060040	7	30
24104-060050	7	31
24104-063054	11	19 A
24104-063064	11	19
24315-000200	14	48
24421-254008	10	49
24421-355511	10	50
24761-060000	18	70
25123-003200	15	42
26013-050164	9	54 -1
26013-060122	2	22
26013-060164	8	26
26013-060202	2	43
	15	67
26013-080124	4	18
	6	17
	12	14
	19	39
26013-080204	1	16
	2	25
	3	16
	4	20
	5	16
	6	19
	8	16
	11	13
	13	33
	14	40
	15	28
	28	-1
26013-100204	7	22
	13	36
	15	61
26013-100252	5	26
	7	23
	10	37
26013-100254	1	18
	3	18
	5	17
	8	18
	11	14
	13	35
	14	41
	15	30
26022-060162	16	16
	17	23
26027-100102	10	33

Parts No.	Fig. No.	Ref. No.
26116-080202	9	25
26117-060122	19	59
26117-060254	12	12
26117-060302	19	36
26117-080162	2	17
	8	13
26117-080202	19	37
		76
26117-080252	8	14
26117-080302	18	52
26117-080504	15	62
26117-100202	4	22
26117-100302	10	34
26207-080254	11	12
26207-100302	12	13
26207-120252	7	25
26366-080002	8	29
26557-050302	17	22
26607-080002	1	20
	2	27
	3	19
	4	23
	5	20
	6	21
	8	20
	9	28
	13	39
	15	31
		31 -1
	16	17 -1
	17	29
	18	61
	19	45
26607-100002	2	28
	4	24
	6	22
	7	37
	9	36
	10	38
	11	16
	15	32
	16	17
	17	30
		35
26707-040020	19	78
26707-050002	17	12
	19	43
26707-060002	9	55
	12	15
	13	38

Parts No.	Fig. No.	Ref. No.
26707-060002	15	34
	17	28
	18	63
	19	44
26707-080002	11	15
	19	77
26707-100002	12	16

Parts No.	Fig. No.	Ref. No.
-----------	----------	----------